



EXTERIOR & INTERIOR  
ARCHITECTURAL PRODUCTS



Contact Us:



6" Classic wall panel 1/2" Cinnamon  
Walnut & Iron Glimmer White Classic

Developer: Crowne Pacific Development



# THE CHAMCLAD® WAY

ChamClad® is revolutionizing architectural design and construction methods across North America and beyond. Our exceptional range of exterior and interior products are setting new standards in the industry.

ChamClad is crafted in Canada from 100% recycled window grade PVC and is committed to providing sustainable solutions for projects that require high performance and minimal upkeep.

Our offerings feature the most realistic wood grain and metallic finishes in the market. These not only enhance visual appeal but also have exceptional weathering performance, resilience against the elements, colour retention, long-lasting durability, low heat build up, and remarkable resistance to scratches and graffiti.



6" Sunbleached Oak Classic Wall and Soffit Panel



6" Canadian Pine Classic Wall Panel

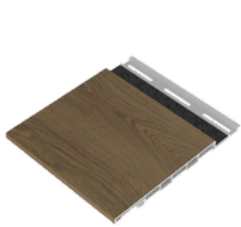


6" Toffee Classic Wall and Soffit Panel

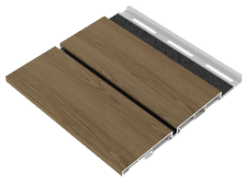


6" Golden Oak Post and Beam Wraps

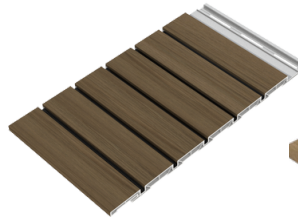
# EXTERIOR WALL & SOFFIT CLADDING SYSTEM



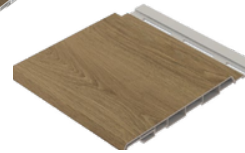
**NEW**  
**6" REVEAL 6"**  
**SHADOWLINE PANEL**  
12', 16', 20' LENGTHS



**NEW**  
**3" REVEAL 6"**  
**SHADOWLINE PANEL**  
12', 16' & 20' LENGTHS



**NEW**  
**2" REVEAL 12"**  
**SHADOWLINE PANEL**  
12' & 16' LENGTHS



**6" CLASSIC WALL**  
**PANEL 1/2"**  
12', 16', 20', 30' LENGTHS



**CLASSIC PANEL**  
**1 PANEL, 2 LOOKS U-**  
**CHANNEL, V-GROOVE**



**6" SOLID SOFFIT**  
**PANEL 3/8"**  
9', 12', 14', 20', 30' LENGTHS



**6" VENTED SOFFIT**  
12', 16', 20' LENGTHS



**UNIVERSAL 2PC OUTSIDE CORNER**  
(AVAILABLE IN 1.5" & 2.5") ALUMINUM & HYBRID  
COMBINATIONS AVAILABLE.



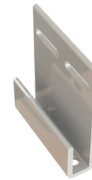
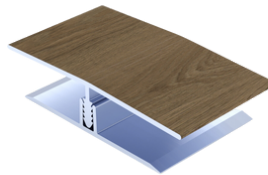
**1PC PVC INSIDE CORNER**



**2PC J-TRIM**  
(AVAILABLE IN 1.5" & 2.5")  
ALUMINUM & HYBRID OPTIONS AVAILABLE

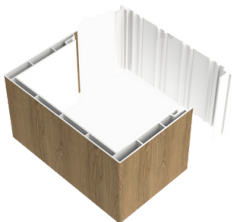


**2PC H-TRIM**  
(AVAILABLE IN 2.75") ALUMINUM

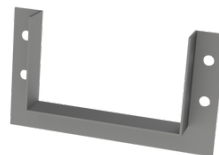


**STARTER STRIP**  
(ALUMINUM OR LOW  
SHRINK PVC)

## BEAM AND COLUMN WRAPS



**NEW**  
**2 PIECE BEAM 5.5 X 3.35"**  
16', 20' LENGTHS



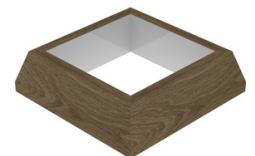
**NEW**  
**BEAM BRACKET**  
ONE SIZE



**NEW**  
**7" 2 PIECE COLUMN WRAP**  
10' LENGTHS



**NEW**  
**1"X4" CELLULAR PVC TRIM**  
6.5', 13' LENGTHS



**COMING SOON**  
**COLUMN BASE**  
ONE SIZE

SEE YOUR REP FOR MORE INFORMATION ON CUSTOM LENGTHS



# FINISHES/ COLOURS



ATLANTIC WHITE



BEACHWOOD  
GREY



TOFINO



BARNBOARD  
GREY



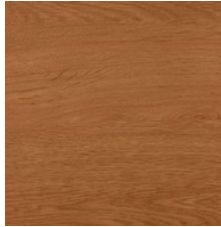
CANADIAN  
PINE



SUNBLEACHED  
OAK



HONEY



CHAI CEDAR



BARREL OAK



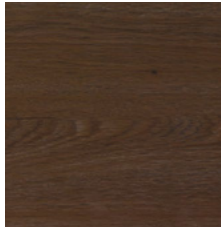
CINNAMON  
WALNUT



HARVEST WALNUT



TOFFEE



MODERN WALNUT



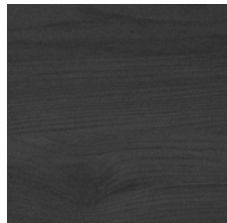
MOUNTAIN OAK



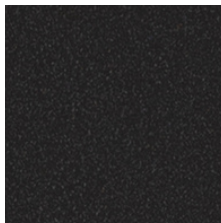
MONUMENT OAK



NATURAL OAK



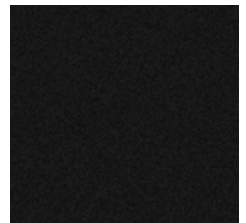
CHARRED  
BLACK



SPECKLED GRAPHITE



BRUSHED  
METALLIC



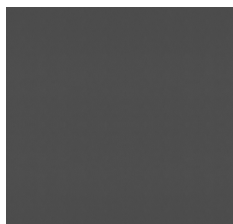
BLACK SAND

*PLEASE NOTE: ALL FINISH CAN BE USED ON ANY OF OUR PROFILES.  
VISIT OUR WEBSITE FOR MORE AVAILABLE FINISHES*

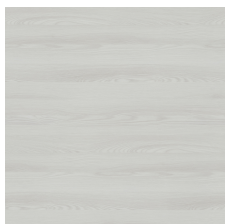
CHAMCLAD.COM



## INTERIOR ONLY FINISHES



BLACK LEATHER



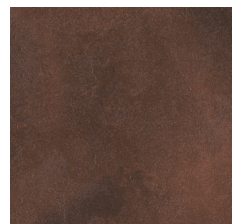
CLASSIC OAK



ITALIAN LEATHER



IVORY STONE



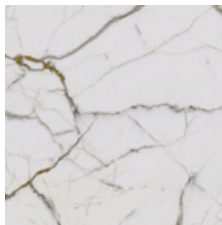
TERRA COTTA



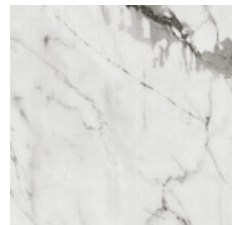
BLACK PEARL



VEGAS STONE



TIFFANY'S



SORRENTO

## INTERIOR WALLS & CEILING



**CLASSIC PANEL**  
1 PANEL, 2 LOOKS  
U-CHANNEL, V-GROOVE



**6" INTERIOR WALLS AND  
CEILING PANELS**  
9', 12', 16', 20', 30' LENGTHS



**12" INTERIOR WALL & CEILING  
SEAMLESS PANEL**  
12' & 20' LENGTHS



**2PC 1.5" PVC OUTSIDE  
CORNER TRIM**  
12' & 20' LENGTHS



**UNIVERSAL J TRIM**  
12' & 20' LENGTHS



**INSIDE CORNER TRIM**  
12' & 20' LENGTHS



**2" 2PC H TRIM**  
12' & 20' LENGTHS



**2PC J-TRIM FOR 3/8"   
PANELS**  
12' & 20' LENGTHS



SIDING AND SOFFIT  
INSTALL VIDEO

# THE CHAMCLAD® ADVANTAGE

## TESTS

- CCMC 14323-R
- ASTM D696-16
- CAN/CGSB – 41.24-.95
- CAN/ULC S102-2018
- ASTM G154-16
- ASTM D790
- ASTM G155
- ASTM D638-22
- ASTM D1929-20
- ASTM E330/-14  
PROCEDURE B Q50<0.85
- RILEM TC -127-MS  
(ACID RAIN)
- CAN/ULC S134
- NFPA 285
- NFPA 268
- ESTM E 119
- TAS 202
- TAS 203
- MADE IN CANADA FROM 100% RECYCLED RIGID PVC
- 50 YEAR WARRANTY
- CANADA AND US DISTRIBUTION
- UV PROTECTED
- IMPERVIOUS TO WATER ABSORPTION, BACTERIA AND MOLD
- LOW MAINTENANCE
- EASY TO INSTALL, NO SPECIAL TOOLS REQUIRED, LIGHTWEIGHT
- HIGH IMPACT RESISTANCE
- SHORT LEAD TIMES
- ONE PROFILE GIVES TWO LOOKS: V-GROOVE AND U-CHANNEL
- CONTRIBUTES TO LEED CERTIFICATION



6" Canadian Pine Classic Wall Panel  
6" & 3" Charred Black Shadowline



6" Natural Oak,  
Mountain Pine &  
Honey Classic Panel



6" Sunbleached Oak  
Ceiling Panel



**FREE  
ONLINE**  
Continuing  
Education

AIA  
Continuing  
Education  
Provider

[www.aecdaily.com](http://www.aecdaily.com)

10235 184 St NW  
Edmonton AB T5S  
2J4 780-454-4430

[CHAMCLAD.COM](http://CHAMCLAD.COM)

