



EXTERIOR & INTERIOR
ARCHITECTURAL PRODUCTS

Column Wraps!

Contact Us:



6" Classic Wall Panel & Column
Wraps Golden Oak

THE CHAMCLAD® WAY

We are a Canadian family-owned business where Customer Service and Quality always remain our top priority. We strive to rise above industry standards for durable solutions that our customers are proud to display on their projects. The integration of sustainability objectives throughout the production process and the use of responsibly sourced materials ensure ChamClad products will contribute to a positive impact on the environment.

ChamClad is transforming architectural design and construction practices throughout North America and beyond. Redefining industry norms, our diverse lineup of exterior and interior products set new standards with remarkably lifelike finishes and minimal maintenance needs. These finishes not only elevate visual appeal but also exhibit outstanding weathering performance, resilience against the elements, color retention, long-lasting durability, and impressive resistance to scratches and graffiti.



ChamClad products are crafted in Canada from engineered 100% recycled, rigid PVC. ChamClad is committed to providing sustainable solutions for projects that require high performance and minimal upkeep.



ChamClad products offer exceptional impact resistance, minimal heat buildup, resistance to water absorption, and are impervious to bacteria and mold. They require minimal maintenance with no need for caulking, staining, or painting. ChamClad high-performance panels offer increased defence against elements including fire, wind and hail, protecting your investment for many years to come.



6" Classic Wall Panel Canadian Pine

ENJOY THE BEAUTY OF REAL
WOOD AND THE SUSTAINABILITY
& LOW MAINTENANCE OF
ENGINEERED RECYCLED
RIGID PVC



6" Classic Wall Panel and Soffit Sunbleached Oak

WOODGRAINS

S - STOCK
NS - NON STOCK



ATLANTIC WHITE
-S



BEACHWOOD
GREY-NS



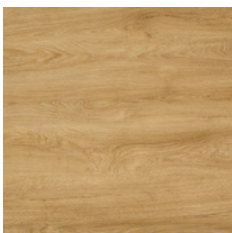
TOFINO-NS



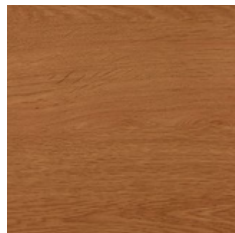
BARNBOARD
GREY-S



CANADIAN
PINE-S



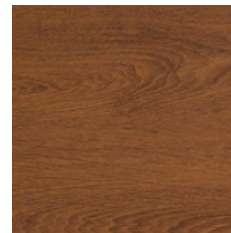
SUNBLEACHED
OAK -S



CHAI CEDAR -S



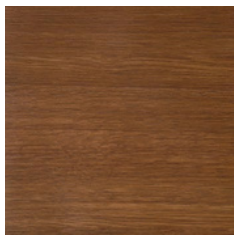
BARREL OAK -S



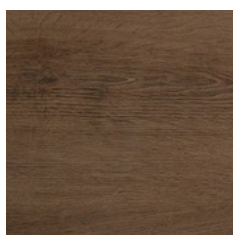
CINNAMON WALNUT -S



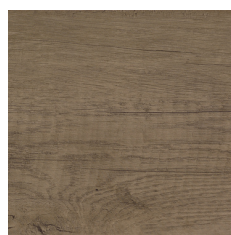
NATURAL OAK -NS



HARVEST WALNUT
-NS



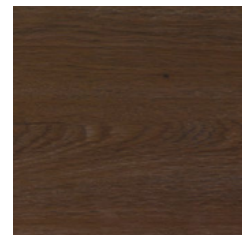
TOFFEE -S



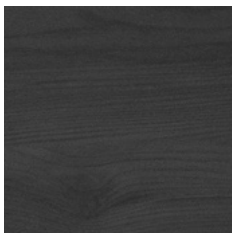
MOUNTAIN OAK
-NS



MONUMENT OAK
-NS



MODERN WALNUT
-NS



CHARRED BLACK-S



SCAN ME TO VIEW ALL
AVAILABLE FINISHES

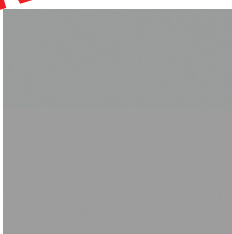
CONTACT YOUR LOCAL
REPRESENTATIVE FOR
STOCKED COLORS.

ACTUAL COLORS MAY
VARY FROM PRINTED
REPRESENTATION

PLEASE NOTE ANY OF
THESE FINISHES MAY BE
USED IN INTERIOR
APPLICATIONS

ULTRA MATTE SOLID FINISHES

NEW



PEBBLE BROOK -S



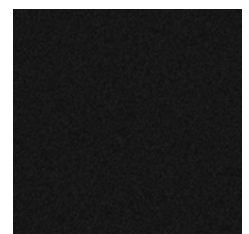
WARM AUTUMN -NS



SAND DOLLAR -S



GREY ASPHALT -NS

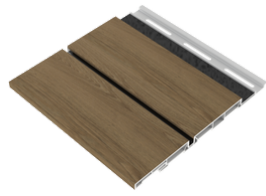


BLACK SAND -S

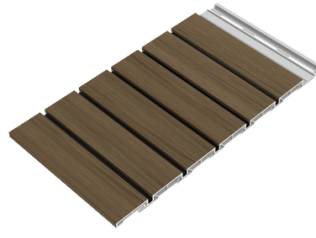
EXTERIOR WALL CLADDING



NEW
6" REVEAL
6" SHADOWLINE PANEL 1/2"
 12', 16', 20' LENGTHS



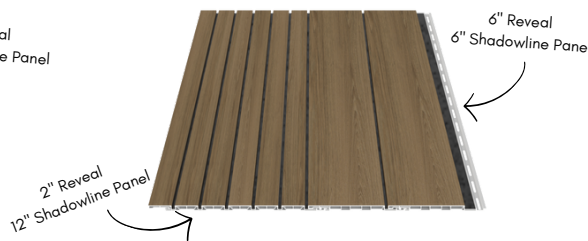
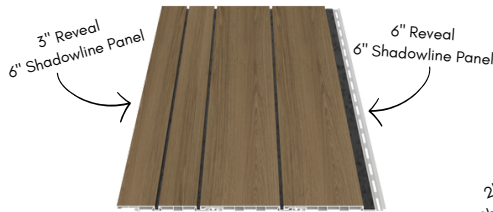
NEW
3" REVEAL
6" SHADOWLINE PANEL 1/2"
 12', 16' & 20' LENGTHS



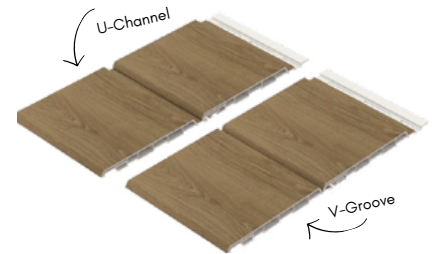
NEW
2" REVEAL
12" SHADOWLINE PANEL 1/2"
 12' & 16' LENGTHS



6" CLASSIC WALL
PANEL 1/2"
 12', 16', 20', 30' LENGTHS



SHADOWLINE SERIES MIX & MATCH!



CLASSIC PANEL
1 PANEL, 2 LOOKS

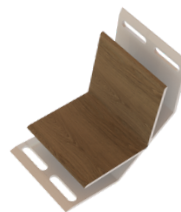
EXTERIOR TRIMS



UNIVERSAL 2PC OUTSIDE CORNER
 AVAILABLE IN 2" & 3.5" (ALL ALUMINUM
 OR ALUM/ PVC HYBRID COMBINATIONS).
 10', 20' LENGTHS



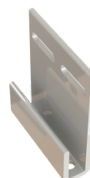
1PC PVC INSIDE CORNER
 10', 20' LENGTHS



2PC 2.75" H-TRIM
 ALL ALUMINUM
 12', 20' LENGTHS



UNIVERSAL 2PC J-TRIM
 AVAILABLE IN 2" & 3.5" (ALL ALUMINUM OR
 ALUM/ PVC HYBRID COMBINATIONS).
 12', 20' LENGTHS



STARTER STRIP
 (ALUMINUM OR PVC)
 12', 16', 20' LENGTHS

CONTACT YOUR LOCAL
 REPRESENTATIVE FOR
 STOCKED PANELS & LENGTHS.

SOFFIT & INTERIOR WALL & CEILING



**6" SOLID SOFFIT
PANEL 3/8"**
9', 12', 16', 20', 30' LENGTHS



**4" SOLID SOFFIT
PANEL 3/8"**
12', 20' LENGTHS



6" VENTED SOFFIT 3/8"
12', 16', 20' LENGTHS
4" VENTED SOFFIT 3/8"
12', 20' LENGTHS

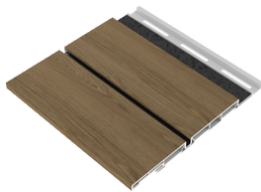


Perfect for Barrel Ceilings
or Curved Walls

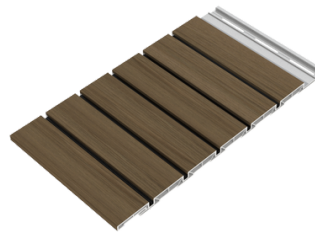
6" FLEXIBLE INTERIOR WALL PANEL 3/8"
12', 16', 20' LENGTHS
4" FLEXIBLE INTERIOR WALL PANEL 3/8"
12', 20' LENGTHS



NEW
6" REVEAL
6" SHADOWLINE PANEL 1/2"
12', 16', 20' LENGTHS



NEW
3" REVEAL
6" SHADOWLINE PANEL 1/2"
12', 16' & 20' LENGTHS



NEW
2" REVEAL
12" SHADOWLINE PANEL 1/2"
12' & 16' LENGTHS



**12" INTERIOR WALL & CEILING
SEAMLESS PANEL 3/8"**
12' & 20' LENGTHS

PVC TRIMS



**2PC 1.5" PVC OUTSIDE
CORNER TRIM**
12' & 20' LENGTHS



**UNIVERSAL 1.5"
J TRIM**
12' & 20' LENGTHS



INSIDE CORNER TRIM
10' & 20' LENGTHS



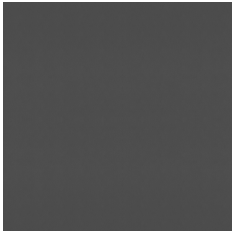
2PC 2" H TRIM
12' & 20' LENGTHS



2PC 1.5" J-TRIM
12' & 20' LENGTHS

CONTACT YOUR LOCAL
REPRESENTATIVE FOR
STOCKED PANEL & LENGTHS.

INTERIOR ONLY FINISHES



BLACK LEATHER



CLASSIC OAK



ITALIAN LEATHER



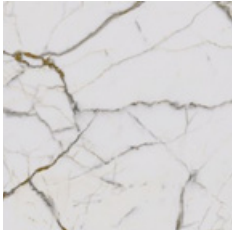
IVORY STONE



TERRA COTTA



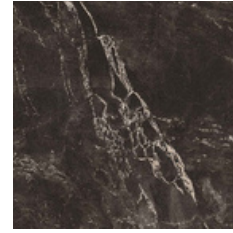
VEGAS STONE



TIFFANY'S



SORRENTO



BLACK PEARL

PLEASE NOTE ALL FINISHES MAY BE USED FOR INTERIOR APPLICATIONS, HOWEVER INTERIOR ONLY FINISHES MAY NOT BE USED ON EXTERIOR APPLICATIONS.

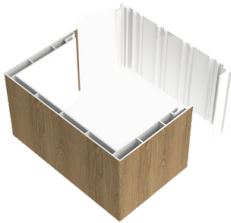
ACTUAL COLORS MAY VARY FROM PRINTED REPRESENTATION

CONTACT YOUR LOCAL SALES REPRESENTATIVE FOR INTERIOR FINISH AVAILABILITY





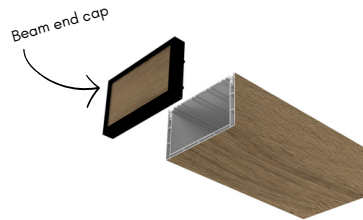
2PC FAUX BEAM



NEW
2PC BEAM 5.5 X 3.35"
 10', 16', 20' LENGTHS



NEW
5.5" BEAM BRACKET



COMING SUMMER 2024
BEAM END CAP

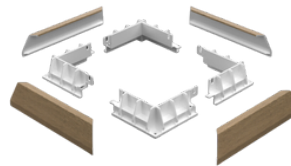
7" 2PC COLUMN WRAP



NEW
7" 2PC COLUMN WRAP
 10' LENGTHS



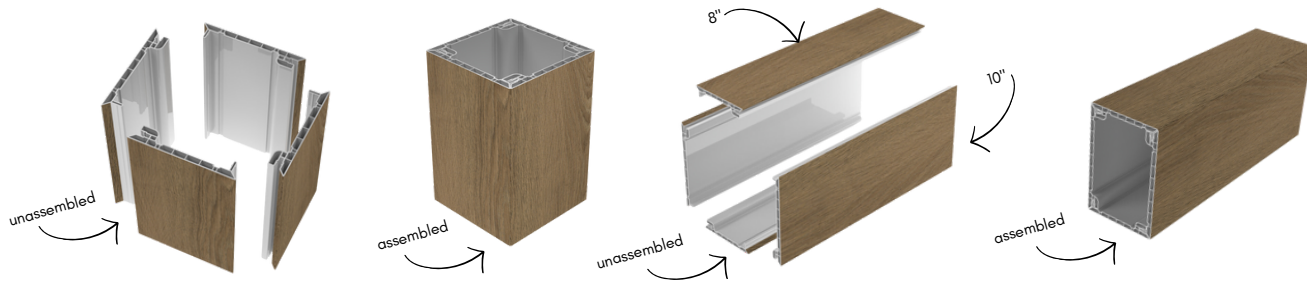
NEW
1"X4" CELLULAR PVC TRIM
 6.5', 13' LENGTHS



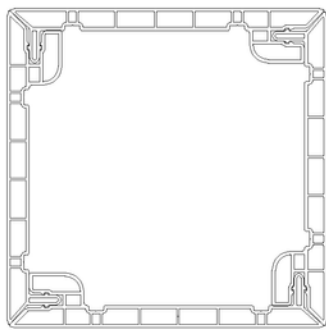
NEW
**QUICK CLICK COLUMN CAP
 OR BASE TRIM**

CHAMCLAD PANELS AND TRIMS MAY ALSO BE USED IN COLUMN WRAP AND BEAM APPLICATIONS.

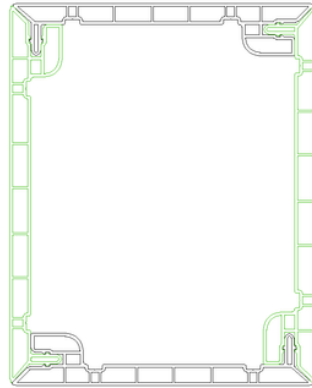
QUICK CLICK COLUMN & BEAM SYSTEMS



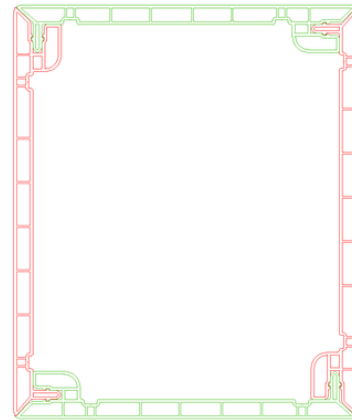
COMING SUMMER 2024
NEW QUICK CLICK COLUMN AND BEAM
 AVAILABLE IN (8", 10" & 12" FACE SIZES)
 SOLD IN SETS OF 2 (2 SETS REQUIRED TO COMPLETE 1 COLUMN OR BEAM)



8" X 8"



8" X 10"



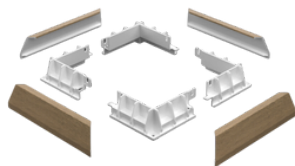
10" X 12"

MIX & MATCH!
 BRING YOUR VISION TO LIFE
 WITH OUR CHAMCLAD QUICK
 CLICK COLUMN & BEAM
 SYSTEM!

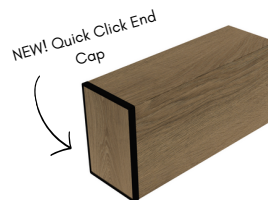
ACCESSORIES



NEW
1"X4" CELLULAR PVC TRIM
 6.5', 13' LENGTHS



NEW
**QUICK CLICK COLUMN CAP
 OR BASE TRIM**



COMING SUMMER 2024
QUICK CLICK BEAM END CAP

TOUCH UP YOUR END CAPS
 SEAMLESSLY WITH A
 CHAMCLAD SPRAY BOMB IN
 THE FINISH OF YOUR CHOICE



6" Classic Wall Panel Toffee



6" Shadowline Panel & 2pc Column Wraps Toffee



6" Classic Wall Panel & Soffit Panel
Sunbleached Oak



Columns Golden Oak



Residential



6" Classic Wall Panel Golden Oak



6" Classic Wall Panel Sunbleached Oak



6" Classic Wall Panel & Ceiling Panel Barrel Oak



6" Classic Wall Panel Toffee



6" & 3" Shadowline Panel Charred Black



6" Classic Wall Panel Honey & Smoke Grey



6" Soffit Panel Mountain Oak



6" Interior Wall & Ceiling Panel Black Wood



6" Soffit Panel Grey Oak



6" Interior Wall Panel Sunbleached Oak



6" Classic Wall Panel Sunbleached Oak



6" Classic Wall Panel Natural Oak



6" Interior Wall Panel Black Wood



6" Soffit Panel Grey Oak



6" Soffit Panel Pure White



6" Soffit Panel Sunbleached Oak



6" Classic Wall Panel Natural Oak



12" Panel Chai Cedar



12" Seamless Panel Copper & Storm Grey



6" & 3" Shadowline Panel Canadian Pine
6" Shadowline Panel and 12" Seamless Panel Terra Cotta



6" Classic Wall Panel Honey



6" Classic Wall Panel Cinnamon Walnut



6" Classic Wall Panel & Soffit Toffee



6" Soffit Panel Spanish Cedar



6" Interior Wall Panel Sunbleached Oak



6" Classic Wall Panel Natural Oak



6" Classic Wall Panel Spanish Cedar

THE CHAMCLAD® ADVANTAGE

TESTS

- ICCES ESR 4560
- CCMC 14323-R
- ASTM D696-16
- ASTM G154-16
- ASTM D790
- ASTM G155
- ASTM D638-22
- ASTM D1929-20
- ASTM E 119
- ASTM E330/-14
- RILEM TC -127-MS (ACID RAIN)
- CAN/CGSB – 41.24.-95
- CAN/ULC S102-2018
- CAN/ULC S134
- NFPA 285
- NFPA 268
- TAS 202
- TAS 203
- FL45923
- MIAMI-DADE COUNTY, FLORIDA NOA NO. 23-1215.02
- WUI

- NFPA 285 AND CAN/ULC S134.
- MADE IN CANADA FROM 100% RECYCLED RIGID PVC
- 50 YEAR WARRANTY (15 YEAR NON-PRORATED)
- **CANADA AND U.S. STOCKING & DISTRIBUTION**
- IMPERVIOUS TO WATER ABSORPTION, BACTERIA AND MOLD
- LOW MAINTENANCE & HIGH IMPACT RESISTANCE
- CONTRIBUTES TO LEED CERTIFICATION
- SCRATCH AND CHEMICAL RESISTANT
- HEAT REFLECTIVE TECHNOLOGY
- EASY TO INSTALL, NO SPECIAL TOOLS REQUIRED, LIGHTWEIGHT
- SHORT LEAD TIMES



6" Soffit Panel Mountain Oak



6" Classic Wall Panel Mountain Pine, Natural Oak, Honey



6" Ceiling Panel Sunbleached Oak

MARCH, 2024



NOA No. 23-1215.02



FL45923



10235 184 St NW
Edmonton AB T5S 2J4
780-454-4430

CHAMCLAD.COM