



PROFILES

2PC COLUMN WRAP 7"

8', 10' & 12' Lengths

4PC QUICK CLICK COLUMNS & BEAMS

8", 10" & 12" Dimensions Represented per associated colour
10', 20' & CUSTOM LENGTHS

2PC FAUX BEAM 5.5" X 3.35"

8', 10', 16' & 20' Lengths

TRIMS & ACCESSORIES

1" X 4" ARCHITECTURAL TRIM (6.5' & 13' LENGTHS)
COLUMN CAP OR BASE TRIM (FOR 7" & 8" COLUMNS)
QUICK CLICK CONNECTOR (10' LENGTH)
3" QUICK CLICK ADAPTER (10', 20' & CUSTOM LENGTHS)
BEAM BRACKET 3.5" & BEAM END CAP

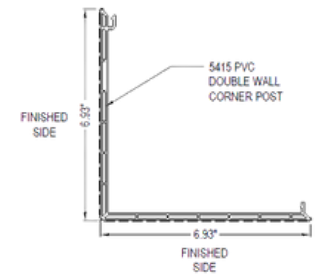
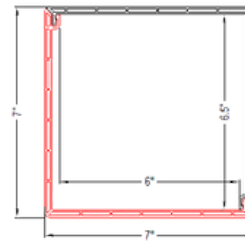
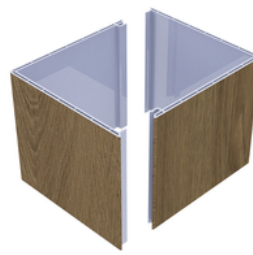
FINISHES

WOODGRAINS, SOLIDS, ANODIZED, METALLICS
& INTERIOR FINISHES
NON STOCK COLOURS AVAILABLE (ADDITIONAL LEAD TIMES)

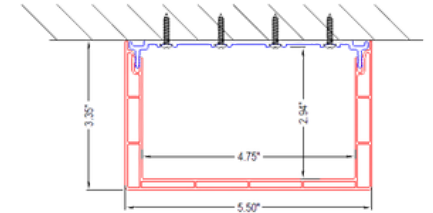
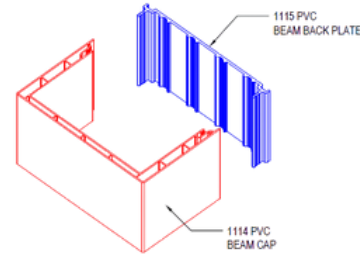
LEAD TIMES

1-2 WEEKS FOR STOCK COLORS + SHIPPING
2-3 WEEKS FOR NON-STOCK COLORS + SHIPPING

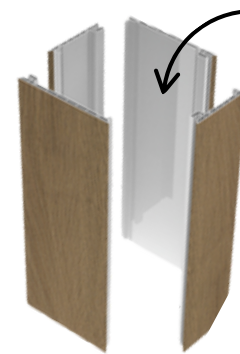
2PC Column Wrap 7"



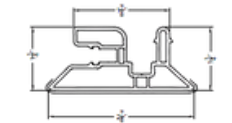
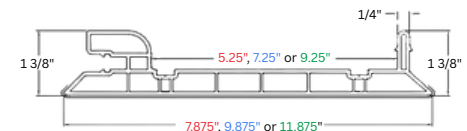
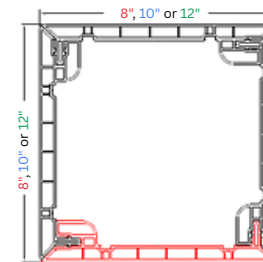
2PC Faux Beam 5.5" x 3.35"



4PC Quick Click Column & Beams



INTEGRATE ANY
COMBINATION OF
SIZE



3" Quick Click Adapter

BIM & CAD DWG Files- Visit our Website for details

TESTS, EVALUATIONS & CERTIFICATES

Fire Rating: 

CAN/ULC S 102.2-2018 Standard Method of Test for Surface Burning Characteristics of Flooring, Floor Coverings, and Misc. Material & Assemblies.



UL 723 (ASTM E84)- Fire Rating (Class A)



American Architectural Manufacturers Association (AAMA):

AAMA 303-19 Voluntary Specification for Rigid Polyvinyl Chloride (PVC) Exterior Profiles.

AAMA 307-16 Voluntary Specification for Laminates Intended for Use on AAMA Certified Profiles.

AAMA 664-21 Voluntary Specification for In-Process Quality Control Requirements for Applicators of

Synthetic Interior & Exterior Laminates.

ASTM G154- 16, Standard Practice for Operating Fluorescent Ultraviolet (UV) Lamp Apparatus for Exposure of Nonmetallic Materials. ASTM G155-21, Standard Practice for Operating Xenon Arc Lamp Apparatus for Exposure of Materials.

RILEM TC 127 MS B5- Determination of the damage caused by acid rain.

Verified Product Declarations



Health (HPD)* and



Environmental (EPD)

THE NORTH AMERICAN EPD® SYSTEM

*The HPD for this product has been verified under HPD Open Standard version 2.
by an Approved Verifier under the HPDC Third Party Verification Program.

