

Installation Manual - Soffit



Revised: July 30, 2025

Supersedes July 30th, 2024.



Scan Code for Install Videos for both Soffits and Walls.

Table of Contents

| | |
|--|----|
| 1.0 BEFORE YOU BEGIN | 4 |
| 2.0 FIRST STEPS FOR A SUCCESSFUL INSTALLATION | 5 |
| 2.1 Transportation, Proper Handling & Storage | 5 |
| 2.2 Tools, Materials and Cutting | 6 |
| 3.0 BEST PRACTICE GUIDE | 7 |
| 3.1 Fasteners | 7 |
| 3.2 Essential Details | 10 |
| 4.0 TEMPERATURE CHANGES & EXPANSION/CONTRACTION | 12 |
| 4.1 Expansion Guide (by temperature shift) | 12 |
| 4.2 Temperature Shift Example using ChamClad® products. | 13 |
| 4.3 General Rules | 13 |
| 4.4 Recommended Gap Allowance Temperature Guide | 14 |
| 4.5 Guidelines | 14 |
| 5.0 CARE AND MAINTENANCE OF CHAMCLAD® EXTERIOR WALL | 15 |
| CHAMCLAD® EXTERIOR SOFFIT | 16 |
| 6.0 TRADITIONAL SOFFIT PANEL SERIES | 17 |
| 6.1 PRODUCTS- 4", 6" and 12" Traditional Soffit Panel Series (3/8") | 17 |
| 6.2 Exterior Soffit Trims (12' & 20' Lengths) | 17 |
| 7.0 VENTILATION | 18 |
| 7.1 ChamClad® Soffit Ventilation Charts- Traditional Soffit | 18 |
| 8.0 INSTALLATION - 4", 6" and 12" Traditional Soffit Panel Series (3/8") | 19 |
| 9.0 REFERENCE PHOTOS..... | 21 |
| 10.0 6" QUICK CLICK SHADOWLINE 1/2" | 23 |
| 10.1 PRODUCTS - 6" Quick Click Shadowline Soffit 1/2" | 23 |
| 10.2 Tools and Materials Required: | 23 |
| 11.0 IMPORTANT INFORMATION..... | 24 |
| 12.0 VENTILATION | 25 |
| 12.1 ChamClad® Soffit Ventilation Charts- 6" Quick Click | 25 |
| 13.0 INSTALLATION- 6" Quick Click Shadowline Soffit 1/2" - Perpendicular | 26 |
| 14.0 INSTALLATION- 6" Quick Click Soffit - Parallel..... | 30 |
| 15.0 ASSEMBLY DRAWINGS..... | 35 |
| 15.1 WS-12 6" Soffit, 6" Exterior Wall & Fascia Detail..... | 35 |
| 15.2 WS-15 4" Soffit, 6" Exterior Wall & Fascia Detail..... | 36 |

| | |
|--|----|
| 15.3 CD-02 Quick Click Soffit Perpendicular Install..... | 37 |
| 15.4 CD-02 Quick Click Soffit Perpendicular Install..... | 38 |
| 15.5 CD-01 Quick Click Soffit Parallel Install | 39 |
| 15.6 Quick Click Soffit Track Spacing Guide on Parallel to the Wall Soffit Panel Install | 40 |
| 15.7 Quick Click Soffit Track Spacing Guide on Parallel to the Wall Soffit Panel with H-Trim Install | 41 |

1.0 BEFORE YOU BEGIN

- ④ Read the install instructions completely. These installation instructions illustrate the “Best Practices” to install ChamClad® cladding and trim.
 - ChamClad® does not accept any liability or responsibility under their written warranty for product failure caused by improper installation.
- ④ To ensure you are up to date with the most recent install instructions, please visit our website <https://ChamClad.com> and view manual in conjunction with the technical bulletin advisory.
- ④ Our research and development team are committed to improving product durability and performance. As a result, specifications may change from time to time. Please check our website for updated technical information and profile drawings.
- ④ While this Installation Manual provides typical methods, tools, and techniques based on standard industry practices, it may not address every question or condition that could arise during installation. We encourage designers and installers to review these guidelines thoroughly and identify any site-specific conditions not covered. In such cases, please contact ChamClad® customer service at insidesalesrep@chamclad.com, and our team will assist in developing a mutually satisfactory solution. It is the responsibility of the design authority and installer to ensure proper layout and compliance with relevant codes.
- ④ Occasionally, you may come across minor irregularities that happen naturally during the manufacturing process. This occurrence will not affect the aesthetics and performance of the product.
- ④ Periodically, you may encounter aluminum accessories where the ends need trimming due to the film shrinking back during the curing process. This occurrence will not affect the performance of the product.



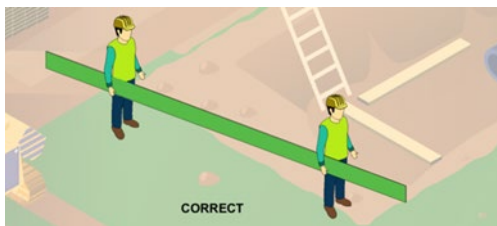
2.0 FIRST STEPS FOR A SUCCESSFUL INSTALLATION

Inspect all material for any breakage, defects, damage, and colour before installing. Do not install product that is questionable. Contact ChamClad® customer service or your dealer for assistance. Installing defective material may void your product Warranty.

Before installing ChamClad® cladding it is very important that installers read and understand the installation recommendations and topics covered in this manual.

2.1 Transportation, Proper Handling & Storage

- ⊙ When transporting ChamClad® products, keep bags flat. The boards must be supported along the full length. Whenever possible avoid using metal banding. Metal banding will cut into the boards if pulled too tight. Materials are required to be inspected for any damage within 7 days of receipt, recorded on the Bill of Lading, and forwarded to info@ChamClad.com. ChamClad® warranty may be voided if damaged product is installed without prior inspection.
- ⊙ Always carry ChamClad® cladding by holding it by the narrow edge and pick boards up in the center. ChamClad® pallets should not be stacked more than 2 pallets high and always stored on a flat surface.



- ⊙ Products must be on a flat surface which supports the entire length of the boards and should be kept dry and out of direct sunlight (when possible). Do not store or place on asphalt or in areas prone to excessive heat buildup. Cover with a tarp leaving ends open to allow for airflow. Store away from areas where there may be falling objects or construction debris that could cause damage. If stacking product, please ensure it is stable.
- ⊙ ChamClad® packaging is vented to limit the greenhouse effect. Do NOT store uninstalled panels in areas of excessive heat prior to installation; doing so may lead to product distortion.
- ⊙ Note: It is important that product is not stored for long periods where temperatures could exceed 30 degrees Celsius (86 degrees Fahrenheit).

2.2 Tools, Materials and Cutting

POWER TOOLS AND HAND TOOLS



- ⊙ Always ensure you wear proper, appropriate and standard PPE when performing cutting and installation.
- ⊙ If using a circular saw, cut cladding face down on a clean surface.
- ⊙ If using a cut-off saw, cut face up
- ⊙ Carbide-tipped blades with 84+ teeth are recommended. (Aluminum blades are optimal)
- ⊙ Do not score or snap ChamClad® exterior cladding
- ⊙ Do not cut ChamClad® with coarse saw blade to avoid chipping or damaging the panel

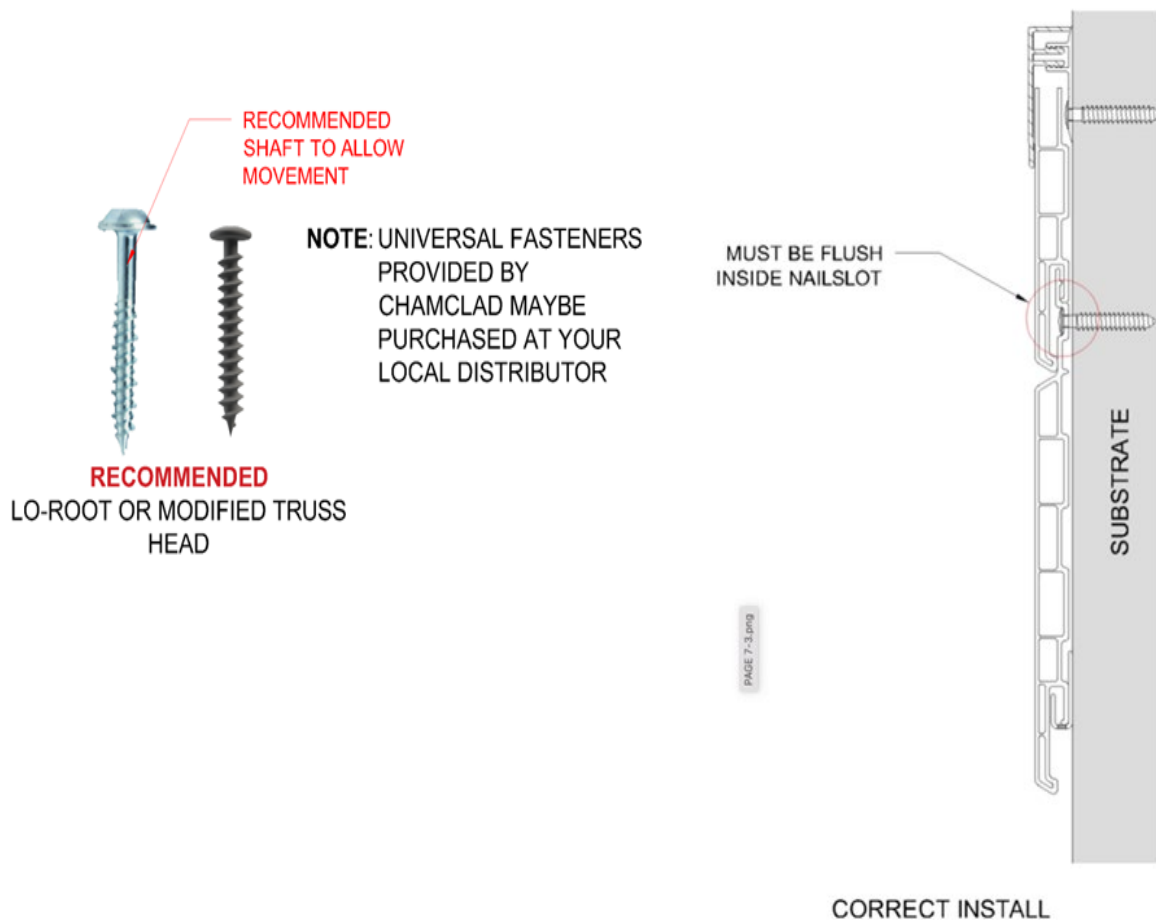
3.0 BEST PRACTICE GUIDE

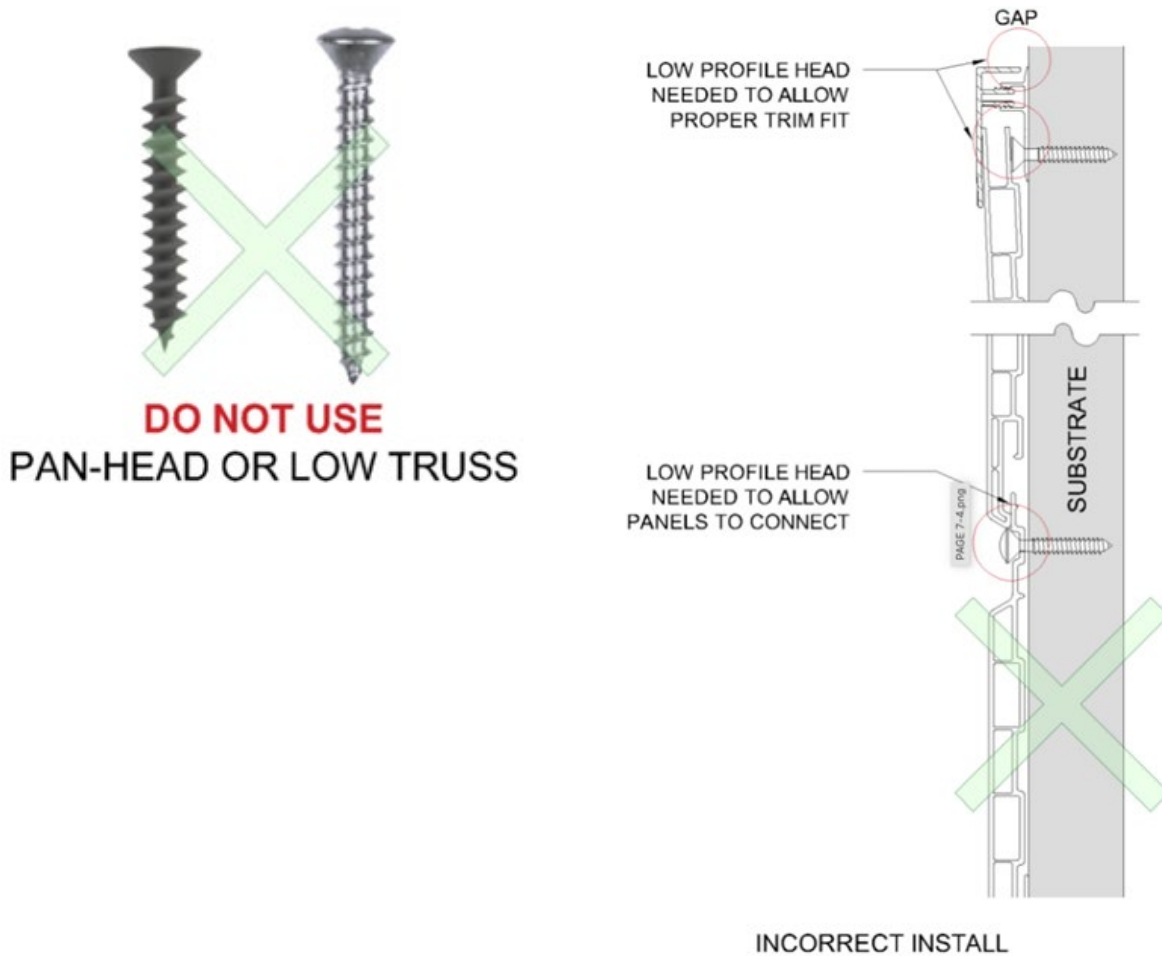
These installation instructions illustrate the “Best Practices” to install ChamClad® cladding, and trim. ChamClad® does not accept any liability or responsibility under their written warranty for product failure caused by improper installation.

It is the responsibility of the installer to observe the requirements of the local Building Code as they relate to installation in any given area. Most Building Codes are derived from National Building Codes. In Canada, the primary model is the National Building Code (NBC), which is published by the National Research Council of Canada (www.nrc-cnrc.gc.ca). In the United States, the primary model is based on the International Building Code (IBC), which produces the International Residential Building Code (IRC).

It is the responsibility of the builder or contractor, to understand the local code and how it pertains to the location where ChamClad® is being installed.

3.1 Fasteners





Fastener Size is critical to a successful ChamClad® installation. We recommend the following:

- ④ Screws: It is strongly recommended to use ChamClad® universal self-tapping screws which are available from your local distributor or directly from ChamClad®.
- ④ The fasteners must penetrate the wall to a minimum depth of 1 ¼" (32mm) and allow for the expansion and contraction of the ChamClad® products. If using metal furring strips, use of self-drilling screw is recommended (Modified truss quadrex coarse thread self-drilling screw #8-18 X 1 ½" (38mm)). You must pre-drill pilot holes when using ChamClad's universal self-tapping screws, when screwing into metal.
- ④ If ChamClad® fasteners unavailable, use low profile, corrosion resistant or stainless-steel screws long enough to fasten through the pre-punched flange. Do not use electroplated fasteners. It is important that the fastener head can fit inside the nailing slot. Fastener heads that protrude outside of the nailing slot will hinder ChamClad® tongue and groove locking mechanism.
- ④ When placing fasteners in the center of the designated nail slots, always leave a 1/32" (.8mm) gap between the fastener head and nail flange to allow ChamClad® panels expand/contract as needed.

| Recommended Screw | |
|---|--|
|  | #8-10 ChamClad Universal Self Tapping 1 1/2" Screw #8 quad-drive 1 1/2" (38mm) |
|  | #8-10 ChamClad Universal Self Tapping 2 3/4" Screw #8 quad-drive 2 3/4" (70mm) |
|  | #8- 18 ChamClad Universal Self Drilling 1 1/2" |
| Examples of Alternate Screws: | |
|  | Exterior Wall #8 1 1/2" (38mm) 17 Self tapping Round Washer Lo-root |
|  | Modified Truss Quadrex Coarse Thread Screw Self-Drilling #8 – 18 X 1 1/2" (38mm) |

Note: DO NOT USE a stapler, or nail gun for exterior cladding and soffit panel installation. GLUE IS NOT to be used to fasten strapping or ChamClad® exterior wall boards.

3.2 Essential Details

☉ Random ChamClad® Panel Pattern

ChamClad® wall panels are laminated with a repeating pattern (48" or 1.2m). ChamClad® makes every effort to ensure the patterns are mixed in each bag to minimize repeat patterns. It is suggested to randomly check panels at the job site for repeat patterns and adjust as required. To avoid excessive repetition when cutting boards 4' (1.2m) or less, use 2 boards with different patterns.

☉ Classic Panel (1 Panel, 2 Looks)

ChamClad® offers a simple tongue and groove system with the product stacking from the bottom up. For a U-Channel profile, insert to the first stop. For a V-Groove profile, take a non-marking rubber mallet and tap to the next stop. Does not apply for Shadowline Panel.

☉ Vented Cavity

ChamClad® exterior wall panels should be installed over a vented wall cavity assembly with furring strips/ strapping, galvanized steel Z-girts (min. 20 ga.), or a continuous 3-dimensional membrane, in accordance with local Building Code requirements. All panels must be fastened every 16–24" (400–600mm) on center. To ensure proper installation and meet warranty requirements, refer to CCMC/ICCES evaluations for assembly requirements. For alternate cavity solutions, contact engineering@chamclad.com.

☉ Exterior Rigid Insulation

When installing ChamClad® exterior cladding over rigid insulation, it is critical that all fasteners penetrate through the insulation and securely anchor into the structural substrate (e.g., wood or steel framing). The preferred method is installing furring (strapping) over the face of the rigid insulation and attaching cladding directly to the furring, which provides both a vented cavity and the necessary structural support.

Installers are responsible for ensuring that the wall assembly, fasteners, and anchoring methods are compatible with the project requirements and comply with local Building Codes. Failure to properly secure the cladding to a structural substrate may compromise the performance and safety of the system. For alternate application, contact engineering@chamclad.com

☉ Wall Flashings and Penetrations

Windows, doors, and utility penetrations must be flashed and trimmed properly. It is the responsibility of the installer/designer/builder to ensure it is done to local codes and best industry practice. If sealants are required, ChamClad® recommends ASTM 920 Elastomeric Joint Sealants (e.g., Tremco Spectrum 2).

☉ 2PC Trim - Vertical Installation

When installing 2pc trims vertically (2PC Outside Corner, 2PC J-Trim, 2PC H-Trim), in order to prevent downward migration, it is recommended to fasten the base trim at the highest point of the nail slot with all other fasteners located in the centre of the remaining slots (every 8-12" (200-300mm)).

Before applying the top cap, it is recommended to add a small dab of sealant (1" or 25mm) between the teeth at the top and bottom of the base trim. This is especially important around doors and windows where you are not completing a full perimeter wrap.

Aluminum Trim - Film Shrink Back

Occasionally, you may encounter aluminum accessories where the ends need trimming due to the film shrinking back during the curing process. This occurrence will not affect the performance of the product.

Compatibility

ChamClad® products should not be stored in bags on asphalt surfaces, such as driveways or roads, before installation or left on asphalt for extended periods. Prolonged exposure to asphalt can cause it to leach into the panels, potentially weakening or discoloring them. If ChamClad® products are exposed to asphalt, clean them immediately using a non-solvent cleaning product. Instead, opt for storage on grass, in a garage, or in a shaded area.

4.0 TEMPERATURE CHANGES & EXPANSION/CONTRACTION

It is important to remember that ChamClad® materials will expand and contract with regular temperature changes. ChamClad® trims allow for any variance in panel lengths due to expansion/contraction.

When placing fasteners in the center of the designated nail slots, always leave a 1/32" (.8mm) gap between the fastener head and nail flange to allow ChamClad® panels expand/contract as needed.

The below guide provides expansion/contraction examples based on different panel lengths and temperature fluctuations.

4.1 Expansion Guide (by temperature shift)

| Temperature Change in °C and °F | | Length of panels (feet) | | | | Length of panels (meters) | | | |
|---|----|--|-------|-------|-------|---|--------|--------|--------|
| °F | °C | 12' | 20' | 30' | 35' | 3.7m | 6m | 9m | 10.7m |
| 50 | 10 | 0.10" | 0.17" | 0.25" | 0.29" | 2.5mm | 4.3mm | 6.3mm | 7.4mm |
| 68 | 20 | 0.20" | 0.34" | 0.50" | 0.59" | 5mm | 8.6mm | 13mm | 15mm |
| 86 | 30 | 0.30" | 0.50" | 0.75" | 0.88" | 7.6mm | 13mm | 19mm | 22.3mm |
| 104 | 40 | 0.40" | 0.67" | 1.01" | 1.17" | 10.2mm | 17mm | 25.6mm | 29.7mm |
| 122 | 50 | 0.50" | 0.84" | 1.26" | 1.47" | 13mm | 21.3mm | 32mm | 37.3mm |
| 140 (optimal gap) | 60 | 0.60" | 1.01" | 1.51" | 1.76" | 15.2mm | 25.6mm | 38.3mm | 44.7mm |
| 158 | 70 | 0.70" | 1.17" | 1.76" | 2.05" | 17.8mm | 29.7mm | 44.7mm | 52mm |
| 176 | 80 | 0.80" | 1.34" | 2.01" | 2.35" | 20.3mm | 34mm | 51mm | 60mm |
| ChamClad®'s Coefficient of linear expansion (CLE): 0.0000698 | | Total Expansion/ contraction per panel (inches) | | | | Total Expansion/ contraction per panel (millimeters) | | | |

4.2 Temperature Shift Example using ChamClad® products.

The change in length of ChamClad® panels due to temperature fluctuations is influenced by three key factors

1. The Coefficient of Linear Expansion (CLE):

For ChamClad® Panels, the CLE is 0.0000698 in/in/°C.

2. Original Length of the Panel:

The length of the panel at the time of installation.

3. Net Temperature Change

The difference between the installation temperature and the ambient temperature during use.

Expansion/Contraction Formula

To calculate the change in length of a ChamClad® panel, use the following formula:

Change in Length (in inches) =

(Original Length in inches) × (Temperature Change in °C) × (CLE)

Example

A 12 ft (144") ChamClad® panel is installed at **20°C (68°F)** and later exposed to **0°C (32°F)**.

Calculation:

$144 \times 20 \times 0.0000698 = 0.20$ inches (approximately 7/32")

The panel will contract by 0.20 inches, resulting in a new length of 143.80 inches. When the temperature returns to 20°C (68°F), the panel is expected to expand back to its original length of 144 inches.

4.3 General Rules

Based on a temperature change of 40°C (104°F), for example: 0°C (32°F) in cooler months and reaching 40°C (104°F) in warmer months:

- ⊕ General rule of thumb, in summer and winter months;
 - **For panels up to 16' (4.9m)** leave a gap on each side of ½" (13mm)
 - **For panels up to 24' (7.3m)** leave a gap on each side of 5/8 (16mm)
 - **Panels 25' (7.6m) and over** need to be pinned (fastened directly through nail rail, not in center of nail slot) to equalize expansion and contraction. Leave of a gap on each side of ½" (13mm) and use larger faced trims to allow for expansion and contraction (3.5" 2pc Finish Trim, 3.5" 2pc Outside Corner, larger faced H-Trim).
 - When using small face trims, refer to gap chart above (page 14).

It is imperative that ChamClad® panels are cut to fit the coverage of trim pieces.

The temperature the day of installation factors into the expansion and contraction gap you leave. If installing on a cooler day allow for more expansion and a larger gap, if installing on a warmer day allow for less expansion and a smaller gap. The below guide provides recommended spacing based on temperature and panel length.

4.4 Recommended Gap Allowance Temperature Guide

| OUTSIDE TEMP. | | GAP PER SIDE (inches) | | | | | GAP PER SIDE (Millimeters) | | | | |
|---------------|-----|-----------------------|------|------|------|-----|----------------------------|------|------|------|------|
| °F | °C | ≤ 12' | 16' | 20' | 25' | 30' | ≤ 3.6m | 4.9m | 6.1m | 7.6m | 9.1m |
| 14 | -10 | 3/8 | 1/2 | 5/8 | 3/4 | 7/8 | 9 | 13 | 16 | 19 | 22 |
| 32 | 0 | 3/8 | 7/16 | 1/2 | 5/8 | 3/4 | 9 | 11 | 13 | 16 | 19 |
| 50 | 10 | 5/16 | 3/8 | 7/16 | 1/2 | 5/8 | 8 | 9 | 11 | 13 | 16 |
| 68 | 20 | 1/4 | 5/16 | 3/8 | 7/16 | 1/2 | 6 | 8 | 9 | 11 | 13 |
| 86 | 30 | 3/16 | 1/4 | 1/4 | 5/16 | 3/8 | 5 | 6 | 6 | 8 | 9 |
| 104 | 40 | 1/8 | 3/16 | 3/16 | 3/16 | 1/4 | 3 | 5 | 5 | 5 | 6 |

4.5 Guidelines

- ⦿ Take into consideration the temperature on date of installation and season you are installing in.
- ⦿ Installation in weather colder than -10°C (14°F) is not recommended due to potential chipping or cracking of the panels. Should that occur warranty may be voided.

It is important to acclimate panels and accessories for a minimum of 24 hours prior to installation.

5.0 CARE AND MAINTENANCE OF CHAMCLAD® EXTERIOR WALL PANELS

ChamClad® products are designed to be low maintenance, and our laminate films have exceptional properties that ensure ease of cleaning and surface longevity. They are highly ultra-violet, scratch, and salt air resistant. The film's low surface tension makes it inherently dirt-repellent and therefore easy to clean. ChamClad® finishes include anti-graffiti properties and, in most cases can be easily removed using a garden hose and mild kitchen detergent and warm water.

To preserve the lifespan of your ChamClad® product and maintain its warranty, regular cleaning and inspection are essential.

- ☉ Minimum Cleaning Frequency: In normal or urban environments, we recommend cleaning your ChamClad® product every 12-18 months.
- ☉ High-Exposure Areas: In areas subject to high pollutants, such as industrial or coastal environments, we recommend cleaning your ChamClad® product every 8-12 months.
- ☉ Regular Inspections: Inspect the product frequently and promptly remove any debris or contaminants such as bird droppings. Prolonged contact with such materials may lead to staining, uneven wear, or surface damage.

Refer to the recommended maintenance guidelines below to ensure optimal care of your ChamClad® product.

General Cleaning:

- ☉ You may clean the surface with a soft cloth, sponge or soft bristle brush and a neutral detergent. It is recommended to use ChamClad® Product Cleaner (supplied by ChamClad®) and/or a soap, or liquid cleaner (in non-concentrated form) such as Simple Green. Follow with a thorough rinsing of fresh water to ensure all cleaner has been removed.
- ☉ If marking has occurred from board-to-board friction, you may clean it with a soft cloth soaked in water and soap. Allow the cloth to sit on the area for 60 seconds. Panels should be rinsed thoroughly with clean water.
- ☉ To avoid streaking start at the top of the wall – working your way to the bottom.
- ☉ You may pressure wash ChamClad® panels with a low PSI pressure washer. DO NOT exceed 1500 PSI.

DO NOT:

- ☉ Do not use solvents when cleaning panels. Solvents may damage the protective layers in the film.
- ☉ Do not wash panels with a pressure washer at close range.
- ☉ Do not use abrasive, erosive, or caustic solvents to clean ChamClad® panels as they can dull and/or damage the panel finish and will void the warranty.

Should you experience removal difficulties, please contact us via email at info@ChamClad.com



6" Soffit & Exterior Siding Toffee

CHAMCLAD® EXTERIOR SOFFIT



6" Soffit Toffee

6.0 TRADITIONAL SOFFIT PANEL SERIES

6.1 PRODUCTS- 4", 6" and 12" Traditional Soffit Panel Series (3/8")



4" Traditional
Solid Soffit Panel
12' & 20' Lengths
100mm x 10mm



6" Traditional
Solid Soffit Panel
12', 16' & 20' Lengths
150mm x 10mm



4" & 6" Traditional Vented
Soffit Panel
12' & 20' Lengths
4" - 100mm x 10mm
6" - 150mm x 10mm



12" Traditional Seamless
Soffit Panel
12' & 20' Lengths
300mm x 10mm

*6" Classic and Shadowline Exterior Cladding - may be used in soffit application (venting supplied by others)
Refer to Exterior Cladding Install manual for 1/2" panel and trim details.*

6.2 Exterior Soffit Trims (12' & 20' Lengths)



1PC Soffit/Interior
J-Trim 1.5" (PVC)



*2PC Soffit/Interior
J -Trim 1.5"



*2PC Soffit/Interior
Outside Corner Trim 1.5"



2PC Soffit/Interior
H-Trim 2" (PVC)



2PC Soffit/Interior
H-Trim 2.75" (ALUM.)

*THESE TRIMS ARE AVAILABLE IN
ALL ALUMINUM, ALL PVC OR
HYBRID COMBINATIONS

Metric Conversion Chart

| Feet | Meters |
|------|--------|
| 10' | 3m |
| 12' | 3.6m |
| 16' | 4.9m |
| 20' | 6.1m |

| Inches | Millimeters |
|--------|-------------|
| 1.5" | 38mm |
| 2" | 50mm |
| 2.75" | 70mm |

7.0 VENTILATION

- ☞ All exterior soffit applications **must include both vented and solid panels** as part of the installation. This applies to soffit areas such as: underside of decks (with or without living spaces above), porch ceiling and perimeter soffit for attic ventilation (as required by code)
- ☞ When using our 12" Traditional Seamless Soffit Panels, venting must be supplied by others.
- ☞ Adequate soffit ventilation is critical — especially during warmer months. Without proper airflow, trapped air can lead to excessive heat build-up, resulting in soffit temperatures that exceed outdoor air temperatures, potentially impacting performance and longevity.
- ☞ Always follow local building codes for ventilation requirements, especially for attic ventilation systems.

7.1 ChamClad® Soffit Ventilation Charts- Traditional Soffit

| Product | Net Free Area (NFA)/ Panel - in ² |
|-----------------|--|
| 4" Soffit x 12' | 14.66 |
| 4" Soffit x 20' | 24.42 |
| 6" Soffit x 12' | 14.66 |
| 6" Soffit x 16' | 19.54 |
| 6" Soffit x 20' | 24.42 |

| Type of Soffit | Ventilation | | |
|----------------|---------------------------------|-------------------------------------|----------------------------------|
| | in ² per Lineal Foot | in ² per ft ² | % of opening per ft ² |
| 4" Vented | 1.33 | 3.67 | 2.54% |
| 6" Vented | 1.22 | 2.44 | 1.70% |

- ☞ Our system demonstrates exceptional performance relative to its compact dimensions, with a narrow 4-inch and 6-inch width that still supports high airflow rates.

8.0 INSTALLATION - 4", 6" and 12" Traditional Soffit Panel Series (3/8")

Refer to assembly drawings listings on pages 35 & 36

- ⑥ Verify that soffit substrate is even and level across all surfaces. Applicators may need to install shims to achieve a consistent surface to attach the soffit panels to.
- ⑥ Attach soffit panels at 12" - 16" (300mm-400mm) using ChamClad® universal screws. If the eave span is greater than 16" (400mm), additional blocking must be installed at 12"-16" (300mm-400mm) O.C.
- ⑥ On exterior soffit installations maintain the proper expansion/contraction distance from the end of the board and the required accessory (refer to gap allowance chart on page 14).
- ⑥ During the installation process, it is important that the soffit material is installed to freely allow expansion and contraction with changes in temperature. It is recommended to use ChamClad® universal screws. Please allow for a 1/32" (.8mm) gap from the fastener head to the nail flange. Due to our PVC's recycled composition, ChamClad® soffit will not swell if exposed to moisture.
- ⑥ When installing vented soffit panels, it is recommended to alternate between solid and vented panels. Always begin installation with a solid soffit panel. First panel, you must rip down nose to tuck inside the 2PC J- Trims and allow for a gap (refer to gap chart page 14)
- ⑥ Do not forcefully press panels together during installation to avoid cupping; panels must be installed loosely to allow for movement. Do not over torque screws when installing soffit. When installing long lengths, start from one end and work your way to the other. **Always verify local building code requirements.**
- ⑥ Depending on the design of the soffit, traditional soffit panels may be installed parallel or perpendicular to the exterior walls. It is important that each panel be fastened at every joist or rafter every 12"-16" (300mm-400mm) O.C. using ChamClad® universal screws. Install additional courses and check alignment to either side of the line. Check that proper gaps according to the typical weather conditions are maintained to allow for proper expansion/contraction.
- ⑥ When wrapping fascia through soffit, install outside corner trim horizontally along the bottom of the fascia. The top portion serves as a starter for the fascia with the underside portion being the starter for the soffit
- ⑥ ChamClad® does not recommend installing products at -10°C (14°F)
- ⑥ Allow the product to be acclimated for a minimum of 24 hours before installing. Refer to gap allowance chart on page 14.
- ⑥ Where more than one soffit length is needed, an H-Trim is required to cover the expansion/contraction gap. **DO NOT BUTT JOINT PANELS.**
- ⑥ Please note 2PC trims require solid backing and be fastened every 8"-12" (200mm-300mm) O.C.
- ⑥ When installing trims and soffit panels, it is important to use low profile ChamClad® universal screws and fasten solid soffit and vented panels every 12" - 16" (300mm-400mm) and all trims fastened every 8"-12" (200mm-300mm).
- ⑥ In high wind or heat areas all soffit panels must be fastened 12" (300mm) O.C. and trims 8" (200mm) O.C.

- ② All 2PC trims must have equal length base and top to support the trim top and ensure full length engagement. Install all 2PC trim tops using a non marking rubber mallet.
- ② When installing final panel, trimming excess panel at a 45° angle at the full length of the panel may ease installation of last panel. Nail slots must be added manually.

NOTE: 4", 6" and 12" X 3/8" soffit panels may NOT be used in exterior WALL application as improper use will VOID WARRANTY.

DO NOT install gas heaters into a soffit or ceiling application.

***If planning to install infrared heaters, check with the Chamclad® Engineering Department to ensure compatibility with cladding at engineering@chamclad.com.

***If planning to install electric heater, we recommend using the "Platinum Smart Heat Electric". Please contact engineering@chamclad.com for further assistance and details.



Platinum Smart Heat

9.0 REFERENCE PHOTOS



Traditional Soffit – Parallel to Building



Traditional Soffit – Perpendicular to Building



Traditional Wrapped Soffit

10.0 6" QUICK CLICK SHADOWLINE ½"

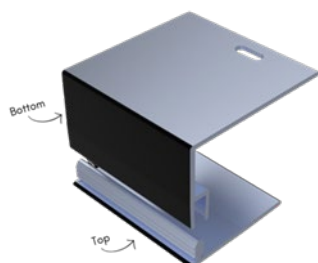
10.1 PRODUCTS - 6" Quick Click Shadowline Soffit 1/2"



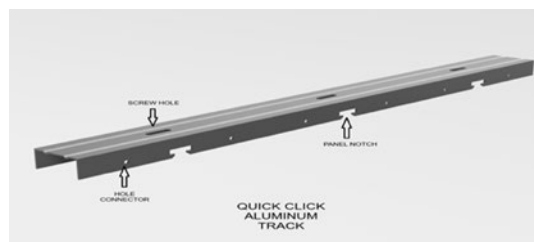
6" Quick Click Shadowline Soffit 1/2"
12', 16' & 20' lengths



Quick Click Aluminum Track Connector
4.7" (119mm) Length
1.38" (35mm) Width
0.6" (15.24mm) Height



2PC Quick Click Aluminum J-Trim
12' & 20' lengths
Top - 1.5" (38mm) & Bottom - 2" (50mm)
AAMA 2604- 15-year outdoor warranty



Quick Click Aluminum Track
12' x 1.5" (3m x 38mm)

10.2 Tools and Materials Required:

- ⦿ Laser leveling devices and/or chalk line
- ⦿ Hacksaw or Sawzall and/or Chopsaw
- ⦿ Power Mitre Saw with a fine-tooth blade
- ⦿ Standard Contractor's tools
- ⦿ Pop Rivets (1/8" x 1/4" 3mm x 6mm) – for Track Connector (Supplied by others)
- ⦿ Fasteners – ChamClad® Universal Screws (1 1/2" 38mm)
- ⦿ 2PC Quick Click Aluminum J-Trim (Perimeter Trim) Standard Black
- ⦿ Quick Click Aluminum Track Connector (10 pc/bag)
- ⦿ Quick Click Aluminum Track- 4pc/Bag
- ⦿ 6" Quick Click Shadowline Soffit 1/2" - Hidden Vent

Metric Conversion Chart

| Feet | | Meters |
|------|--|--------|
| 10' | | 3m |
| 12' | | 3.6m |
| 16' | | 4.9m |
| 20' | | 6.1m |

| Inches | Millimeters |
|--------|-------------|
| 1.5" | 38mm |
| 2" | 50mm |
| 2.75" | 70mm |

11.0 IMPORTANT INFORMATION

- ④ Review all drawings applicable to the installation and predetermine the layout of the Quick Click track, trims and panels. To optimize yield and minimize waste, there may be various panel lengths incorporated into your project (please be sure to check panel location(s) on drawings and layout install plan accordingly)
- ④ Review installation guidelines (below) completely and if you have any questions or require further clarification, please contact the ChamClad® Engineering Department at 1.780.454.4430 or email: engineering@chamclad.com
- ④ It is critical that perimeter trims and tracks be aligned and level to ensure correct engagement of panels into track.
- ④ For installations in areas with high wind loads, please contact us regarding engineering guidance. Our system is designed to handle wind loads of up to 97 MPH at a 24-inch spacing and 120 MPH at a 16-inch spacing.
- ④ Take note of track and panel direction before planning.
- ④ Light cutouts should be made as the soffit and/or ceiling panels are installed. We recommend lights that are independently suspended. Use a hole saw cutter or mitre saw with a fine-tooth blade and trim kits provided with spotlights. Trim panels around lights to allow for expansion and contraction into the trim. Never hard fasten a light fixture.
- ④ Should you need to remove a panel, use a putty knife to pop out and then reinstall.
- ④ Whenever possible, complete project with full panels.

12.0 VENTILATION

- ☉ Ventilation is essential for all soffit applications — always ensure compliance with local building codes.
- ☉ General Rule: 1 sq. ft. of ventilation for every 150 sq. ft. of uninsulated attic space and ventilation should be balanced: 50% intake (soffit) and 50% exhaust (roof).
- ☉ ChamClad® Quick Click Soffit System features a built-in, concealed venting on *every panel*, ensuring consistent airflow throughout the entire soffit installation.
- ☉ Even though our NFA per linear foot or square foot may appear lower, the total *vented area is significantly increased* due to the full panel venting capability.
- ☉ Designed with hidden vent strips, maintaining a clean, modern look while maximizing airflow efficiency.
- ☉ Offers a balanced combination of aesthetics, coverage, and ventilation performance, making it an ideal solution for projects prioritizing both form and function.

12.1 ChamClad® Soffit Ventilation Charts- 6" Quick Click

| Product | Net Free Area (NFA)/ Panel |
|------------------------------|----------------------------|
| 6"QC Shadowline Soffit x 12' | 13.03 |
| 6"QC Shadowline Soffit x 16' | 17.37 |
| 6"QC Shadowline Soffit x 20' | 21.71 |

| Ventilation | | |
|---------------------------------|-------------------------------------|----------------------------------|
| in ² per Lineal Foot | in ² per ft ² | % of opening per ft ² |
| 0.75 | 1.51 | 1.51 % |

- ☉ Our system demonstrates exceptional performance relative to its compact dimensions, with a narrow 6-inch width that still supports high airflow rates.

13.0 INSTALLATION- 6" Quick Click Shadowline Soffit ½" - Perpendicular

Refer to Guide Layout and Details on page 37 & 38 for additional information.

13.1 Plan the Layout:

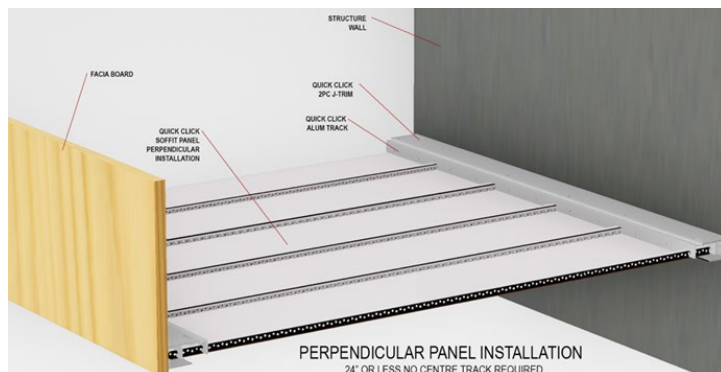
- Plan the soffit layout carefully, as panels cannot be butt joined. Use two 2PC J-Trims back-to-back (functioning as an H-trim) for extended runs and corners. Fasten J-Trim into structural member. If not possible, J-Trims require backing.

13.2 Install 2PC Quick Click Aluminum J-Trim:

- Install the base of the 2PC J-Trim around the soffit perimeter, ensuring it is level on all sides. For end walls, install the trim level with the track to align the soffit
- Fasten 2PC J-Trim with ChamClad® universal screws every 24" (600mm) ensuring the J-Trim is fastened to the structural framing.

13.3 Install QC Track:

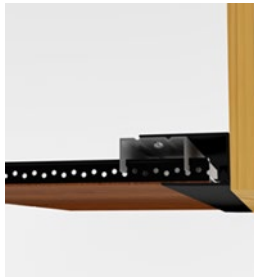
- Track must be fastened to a structural membrane to a **max of 24" (600mm)**. If your overhang is 24" (600mm) or less, no centre track is required. Quick Click Aluminum Track **MUST** be installed inside 2PC J-Trim.



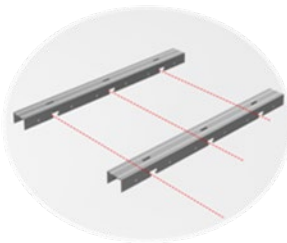
- If your overhang is **more than 24" (600mm) to a max up to 36" (900mm)**, install a single Quick Click Aluminum Track down the centre and ensure the 2PC J- Trim is level so panels sit straight.



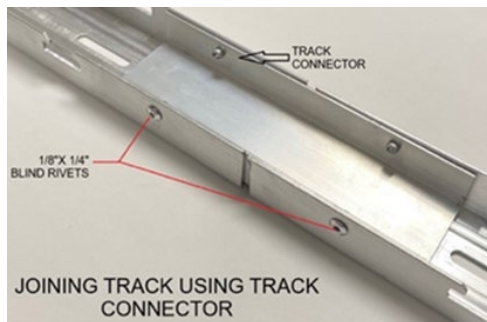
- Fasten Quick Click Aluminum Track MAX every 24" and align with screws on the structural side.



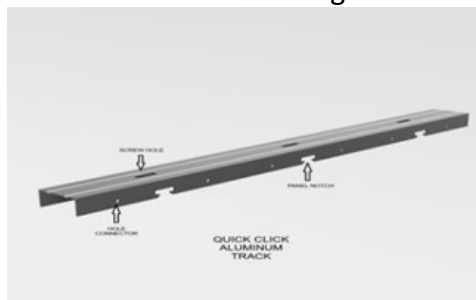
- Screw a full piece of Quick Click Aluminum Track at 16" to 24" O.C. (400mm-600mm).
- At the terminating end walls, run the Quick Click Aluminum Tracks into the 2PC J-Trim. It is wide enough to hold track and panels. This will provide required additional support.
- Use a laser level, straight edge or straight line to verify subsequent tracks align with the first track for proper panel engagement.



- At junctions between tracks, use a Quick Click Aluminum Track Connector to join two Quick Click Aluminum Tracks with rivets



- Temporarily insert a panel into the notches to check alignment. A smooth and even fit confirms correct track alignment.



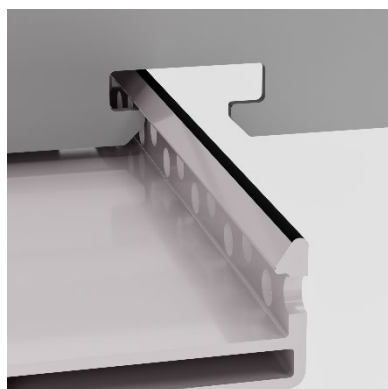
13.4 Install QC Panels:

- ④ Leave an allowance on the ends for the panel to expand and contract. Refer to Gap Chart on page 14 for allowances.
- ④ Start installing the QC Panel with the fin side inserted first into the track



- ④ Ensure the panel is fully engaged in the track before clicking in the next panel. Continue until all panels are installed.

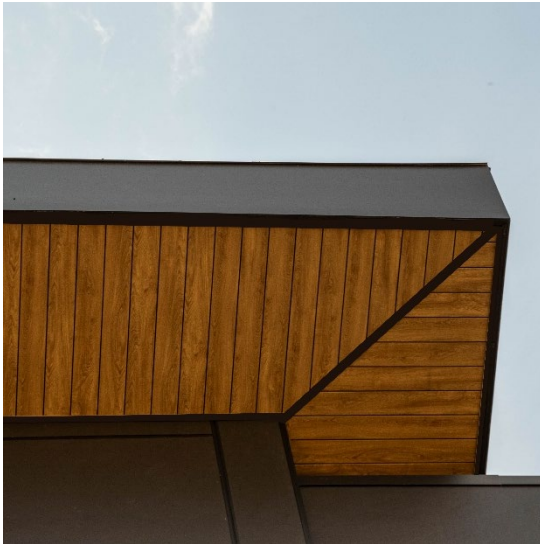
NOTE: To ensure the panels are fully engaged the metal edge must be secured under the lip of the panel as shown in the illustrations below. We recommend using a non marking rubber mallet to ensure they are fully engaged.



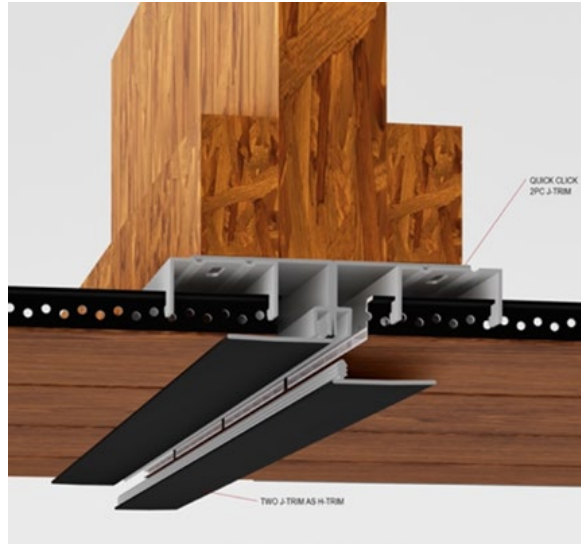
- ④ Whenever possible, complete the project using full panels. If ripping a panel is necessary, cut the panel using a power saw with a fine-tooth blade.
- ④ For corners, use the Quick Click 2PC J- Trim back-to-back (functioning as an H-Trim) on blocking.

13.5 Final Touches:

- After installing all the QC soffit panels, use a mitre cut to install the top QC J-Trim. This method ensures a clean and professional finish for your soffit installation, especially around corners.



Mitred Corner Detail



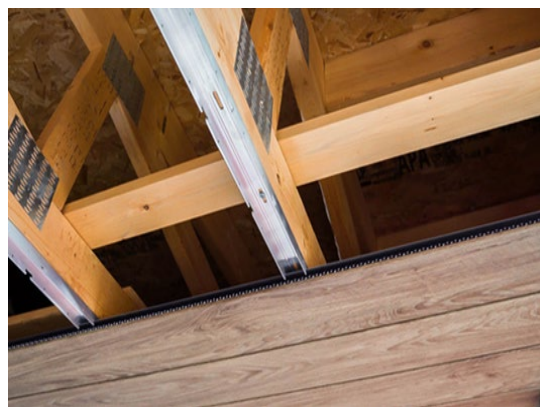
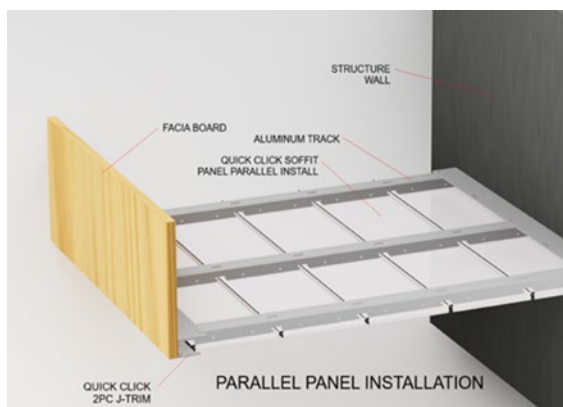
2PC J- Trim, back-to-back on blocking

14.0 INSTALLATION- 6" Quick Click Soffit - Parallel

Refer to Guide Layout and Details on page 39, 40 & 41 for additional information.

14.1 Plan the Layout:

- ⦿ Plan the soffit layout carefully, as panels cannot be butt joined. Use two 2pc QC J trims back-to-back (functioning as an H trim) for extended runs and corners. Fasten J trim into structural member. If not possible, J trims require backing.



14.2 Install Base 2PC Quick Click J Trim:

- ⦿ Install the 2pc QC J-Trim base around the soffit perimeter.
- ⦿ Ensure the base is level on all sides.
- ⦿ Fasten with ChamClad® universal screws.

14.3 Install QC Track:

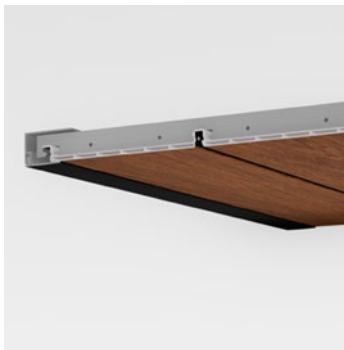
- ⦿ Prior to installation, trim the track by 2 3/8" (60mm) and leave a 1/4" (6mm) to attach to the J-Trim. This will give full coverage when the top of the J-Trim is installed. Start with a full panel at the wall.



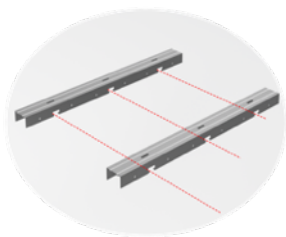
- Start by screwing a full piece of QC Track to a maximum of 24" (400mm) O.C.



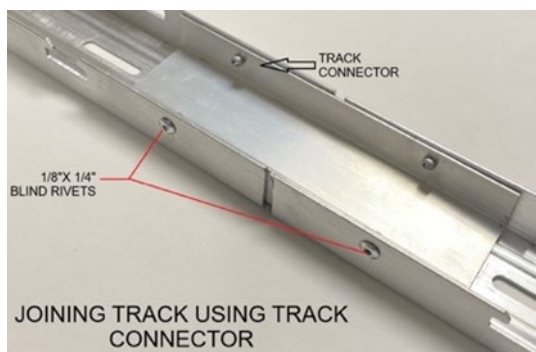
- Run QC tracks into the 2PC J-Trim. It is wide enough to hold track and panels. This will provide additional support.
- Note: Install the first track inside J-Trim, then continue with spacing 24" (600mm) O.C. If the last track spacing exceeds 18" (450mm) from the perimeter J-Trim you must install a track inside the J-Trim.



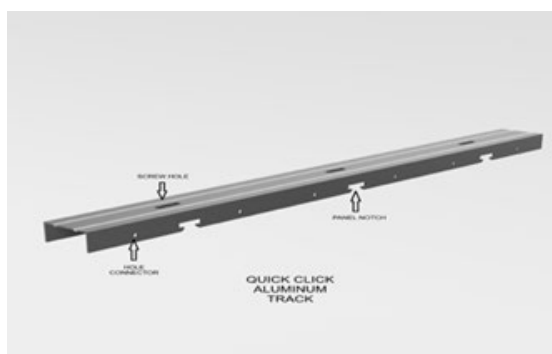
- Use a laser level, straight edge or string line to ensure subsequent tracks are aligned with the first track for proper panel engagement.



- At junctions between tracks, use a track connector to join two QC tracks with rivets.

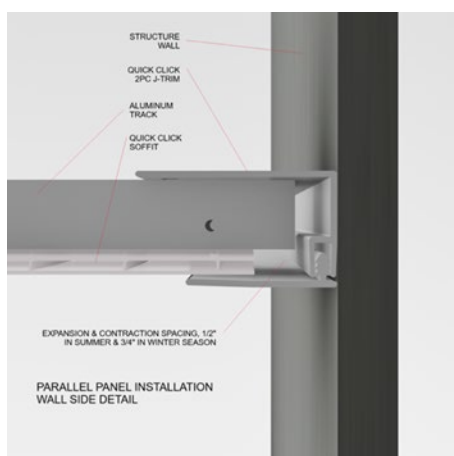


- Temporarily insert a panel into the notches to check alignment. A smooth and even fit confirms correct track alignment.



14.4 Install QC Panels:

- Leave an allowance on the ends for the panel to expand and contract. Typical allowance is 1/2" (13mm) in summer and 5/8" (15mm) in winter for up to 20' (6.1m) lengths.



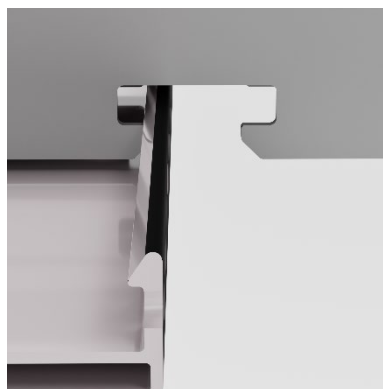
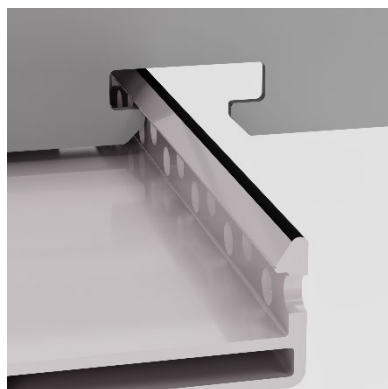
- If ripping a panel is necessary, start installing full size panel at structure side and finishing with ripped panel at fascia side.

- Install the QC panel with the fin side inserted first into the track.

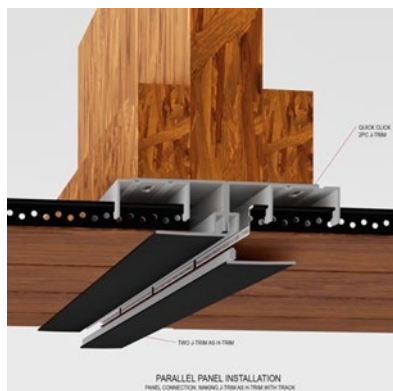


- Ensure the panel is fully engaged in the track before clicking in the next panel. Continue until all panels are installed.

NOTE: To ensure the panels are fully engaged the metal edge must be secured under the lip of the panel as shown in the illustrations below. We recommend using a non marking rubber mallet to ensure they are fully engaged.

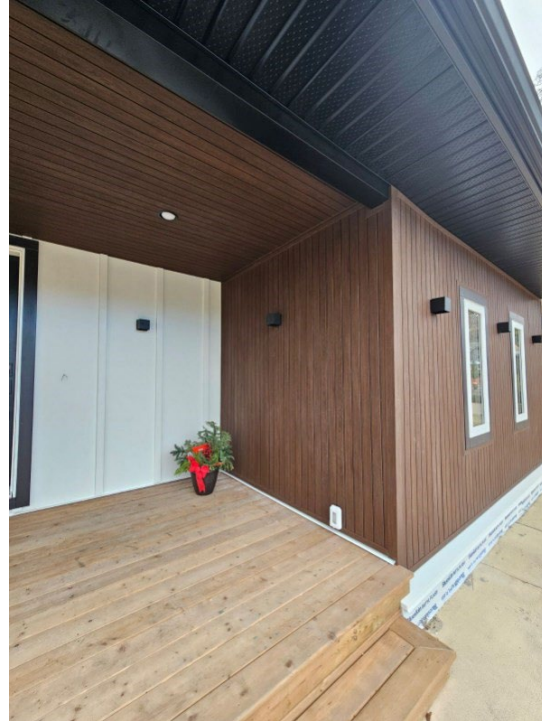
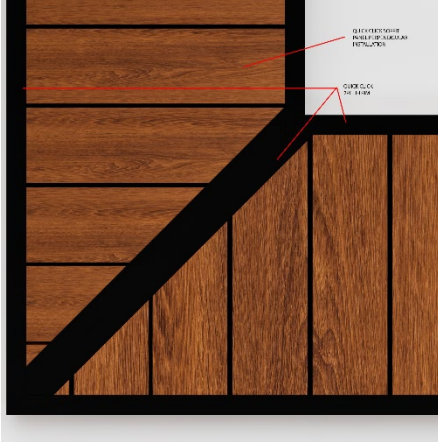


- Whenever possible, complete the project using full panels. If ripping a panel is necessary, cut the panel using a power saw with a fine-tooth blade.
- Panels cannot be butt joined. Use two QC J-Trims back-to-back on solid backing (functioning as an H-trim) for extended runs and corners.



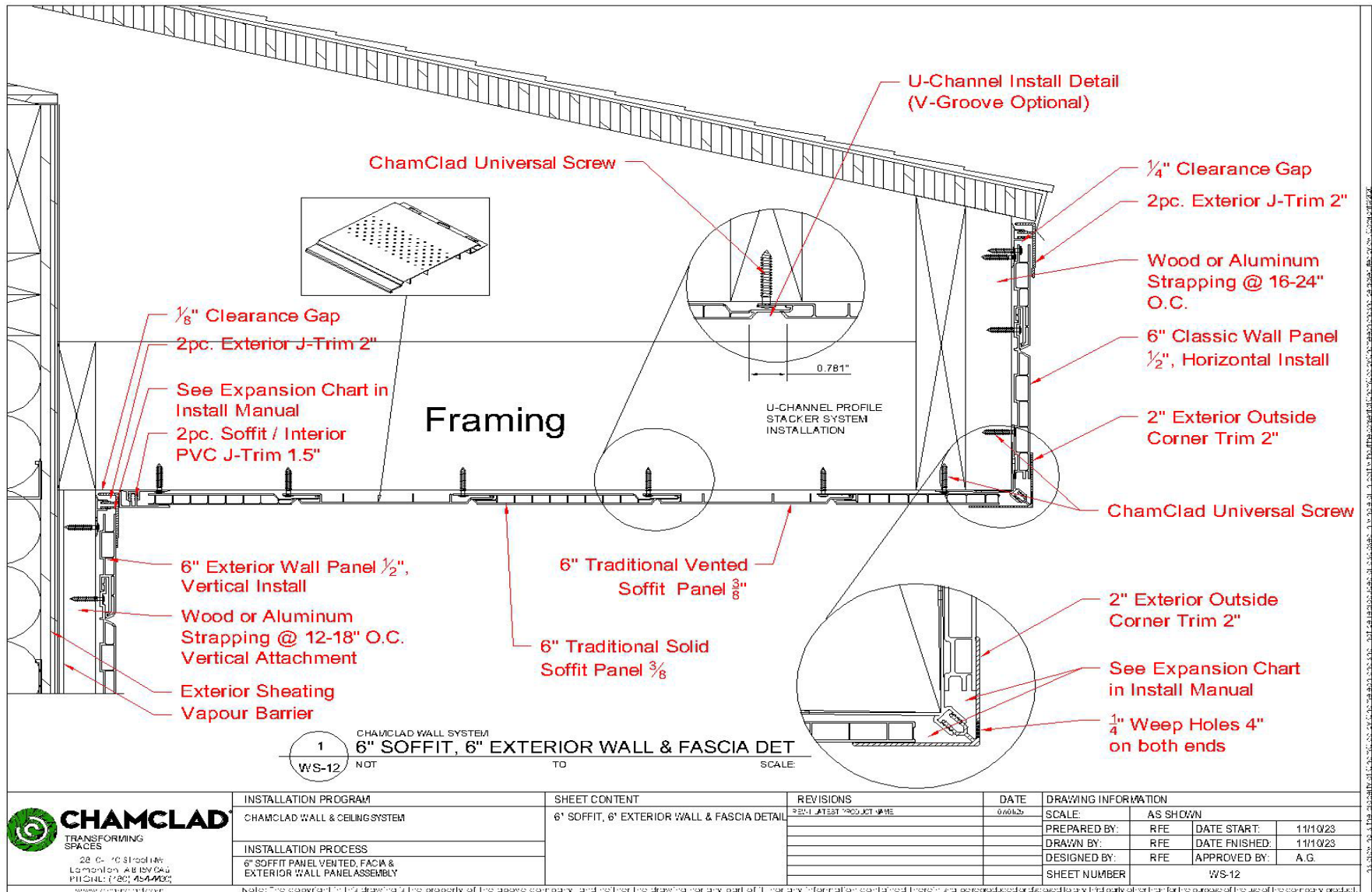
14.5 Final Touches:

- ④ After all panels are installed, use a mitre cut to install the top QC J-Trim, completing the corner. This method ensures a clean and professional finish for your soffit installation, especially around corners.

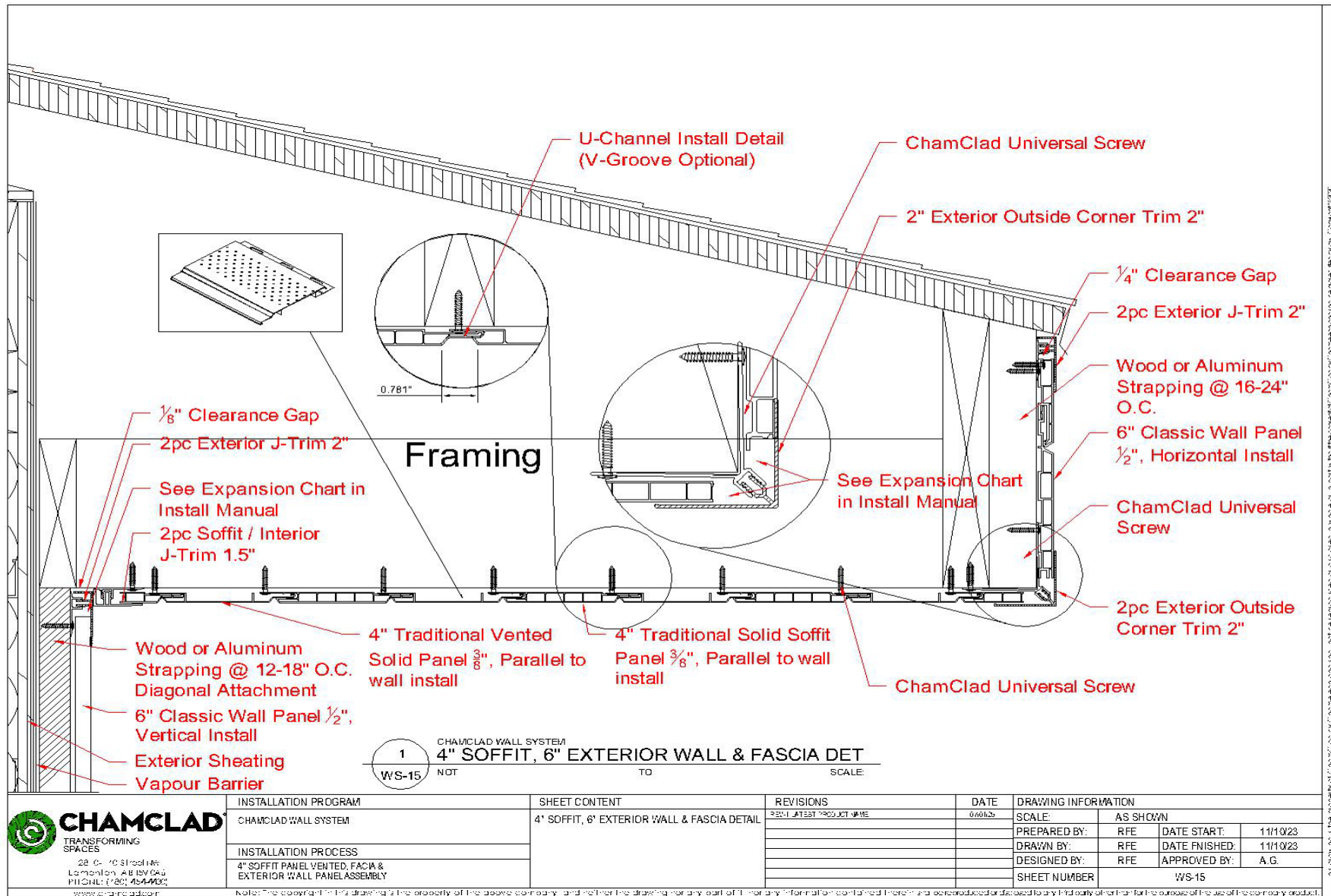


15.0 ASSEMBLY DRAWINGS

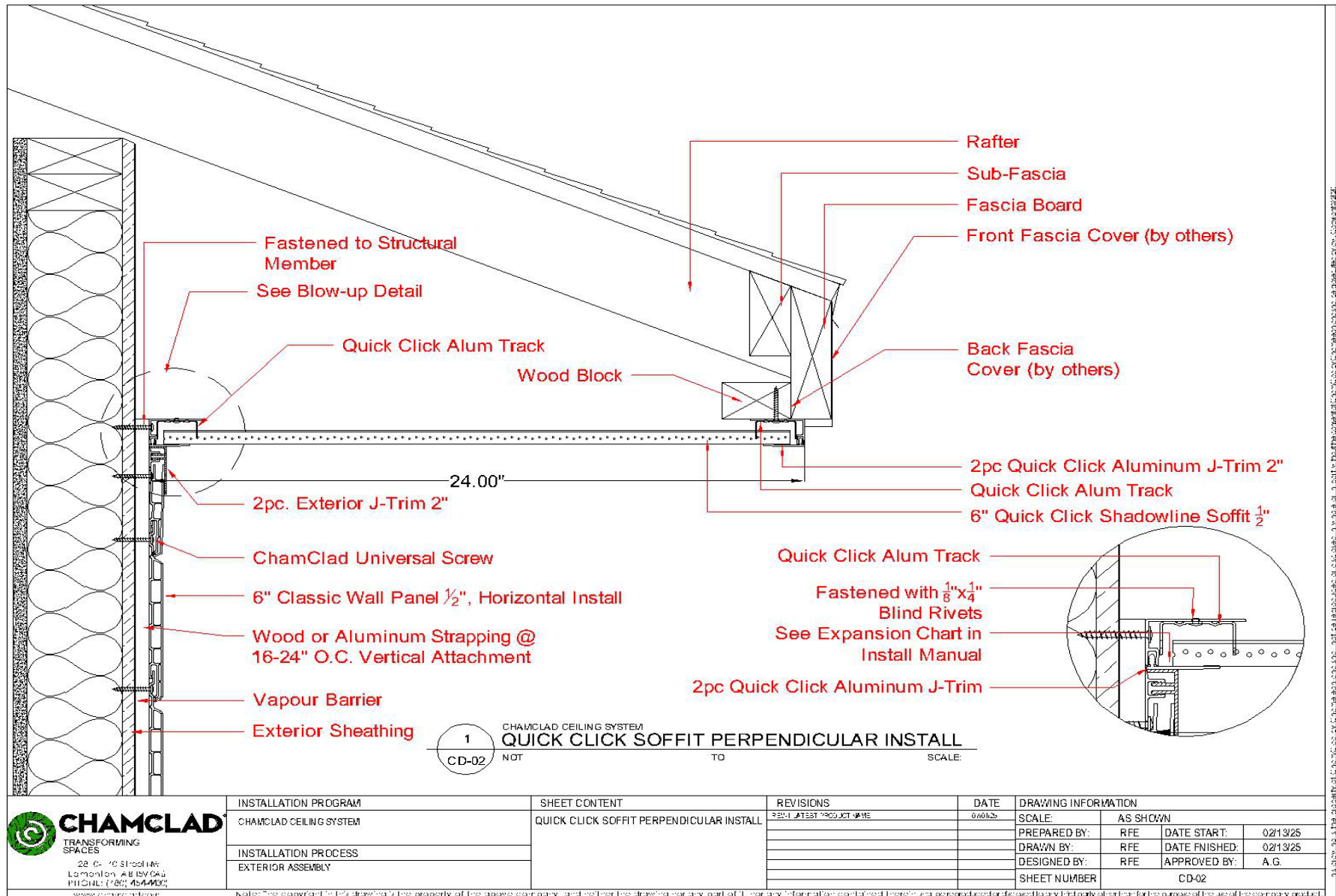
15.1 WS-12 6" Soffit, 6" Exterior Wall & Fascia Detail



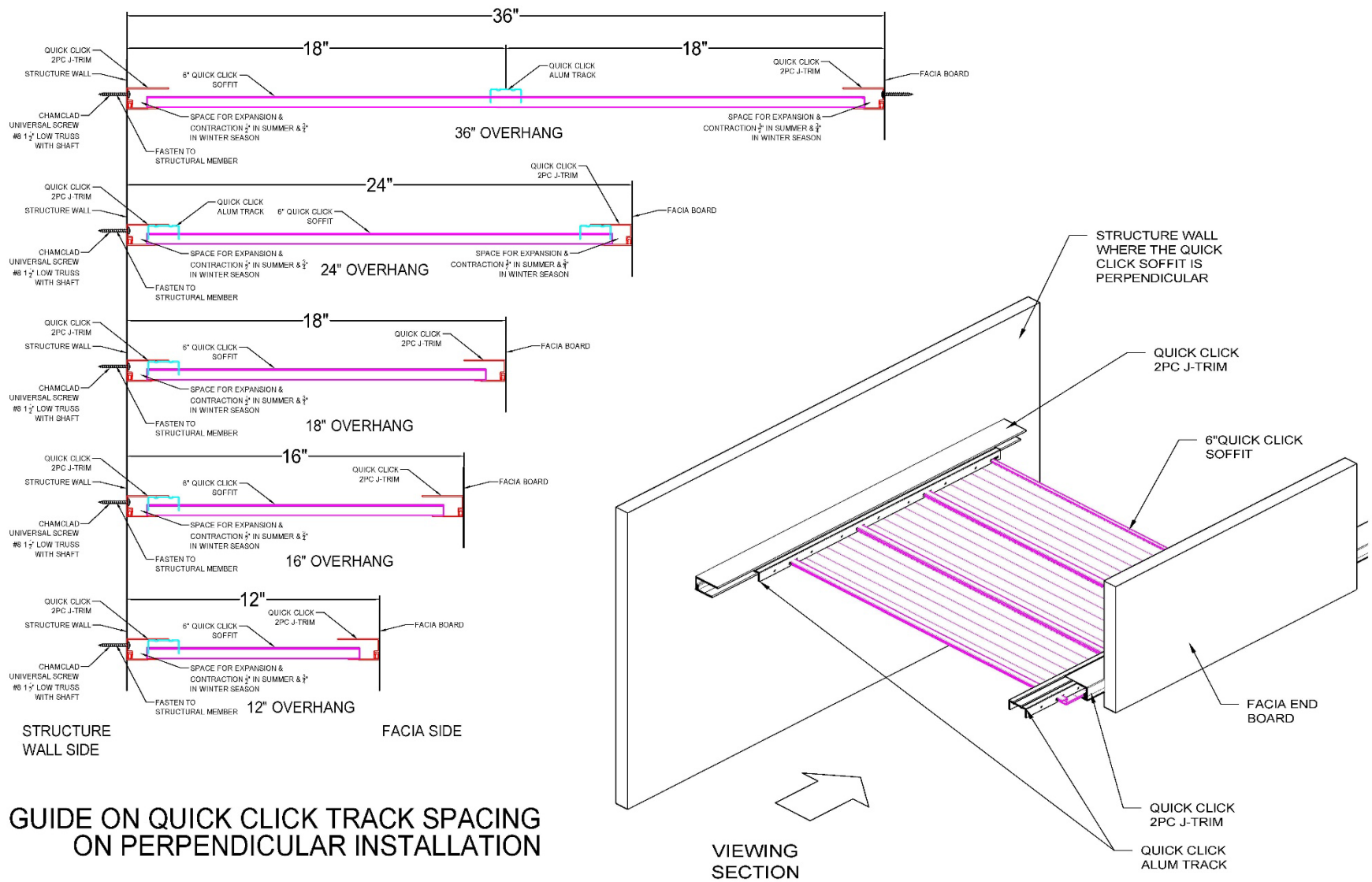
15.2 WS-15 4" Soffit, 6" Exterior Wall & Fascia Detail



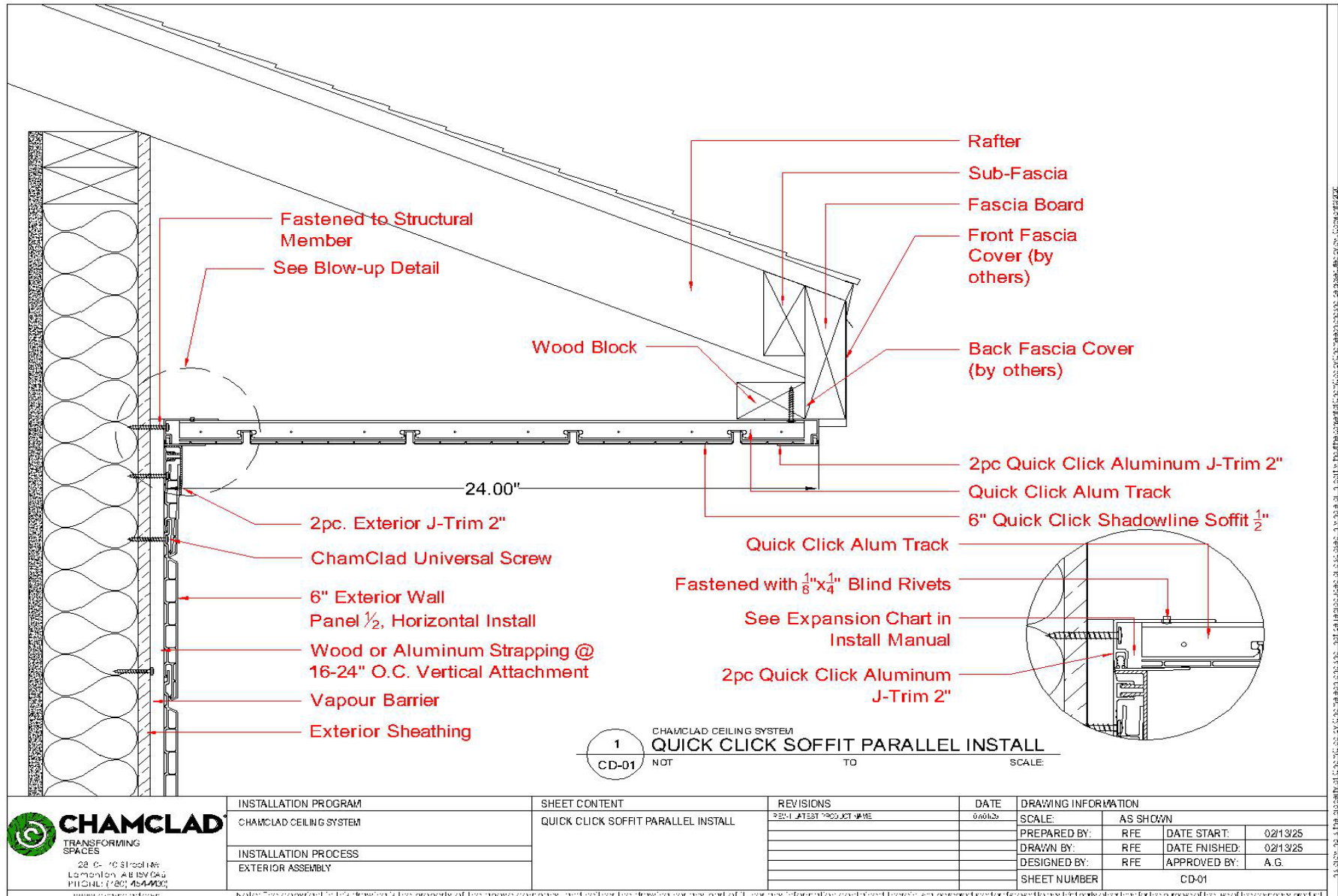
15.3 CD-02 Quick Click Soffit Perpendicular Install



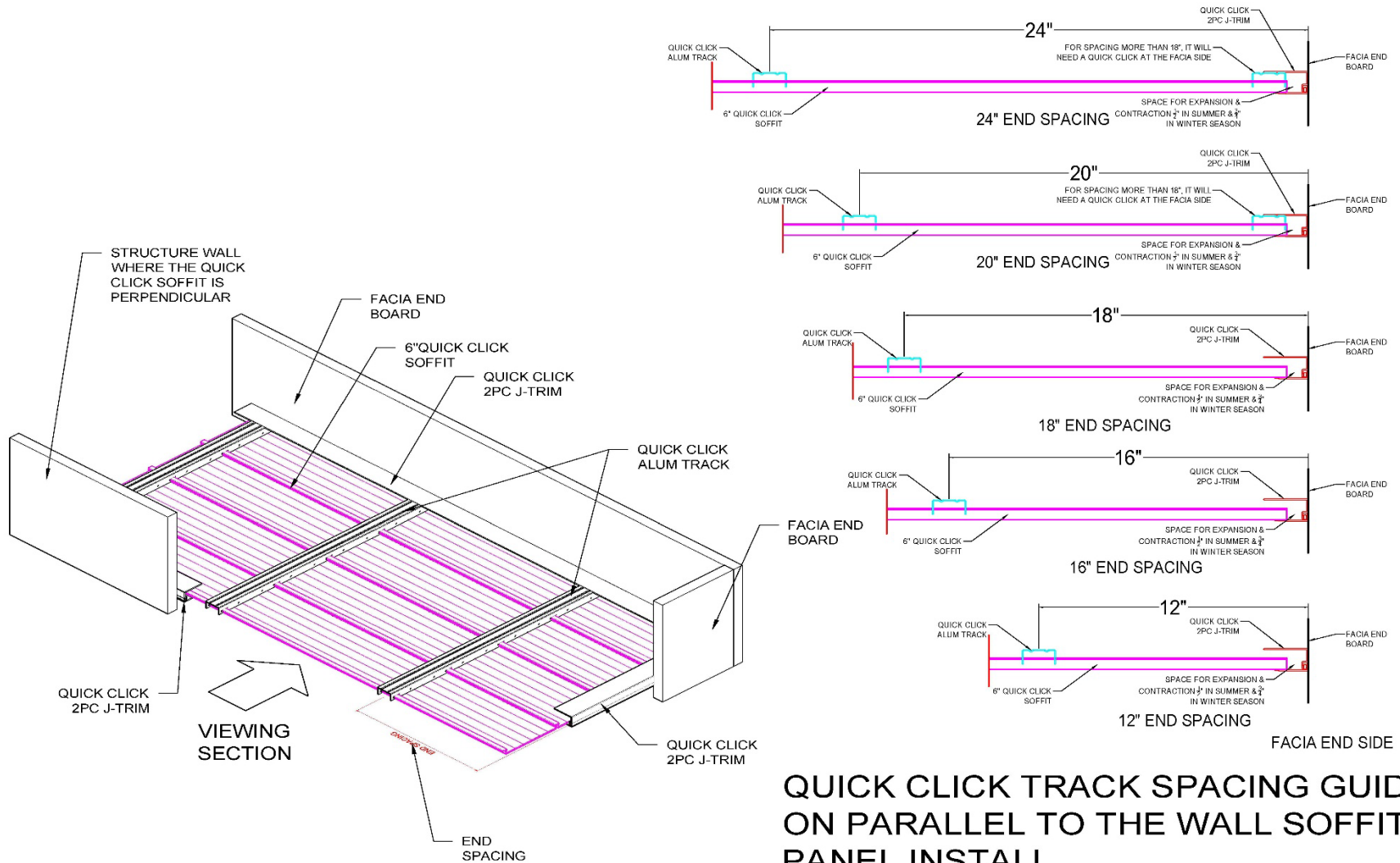
15.4 CD-02 Quick Click Soffit Perpendicular Install



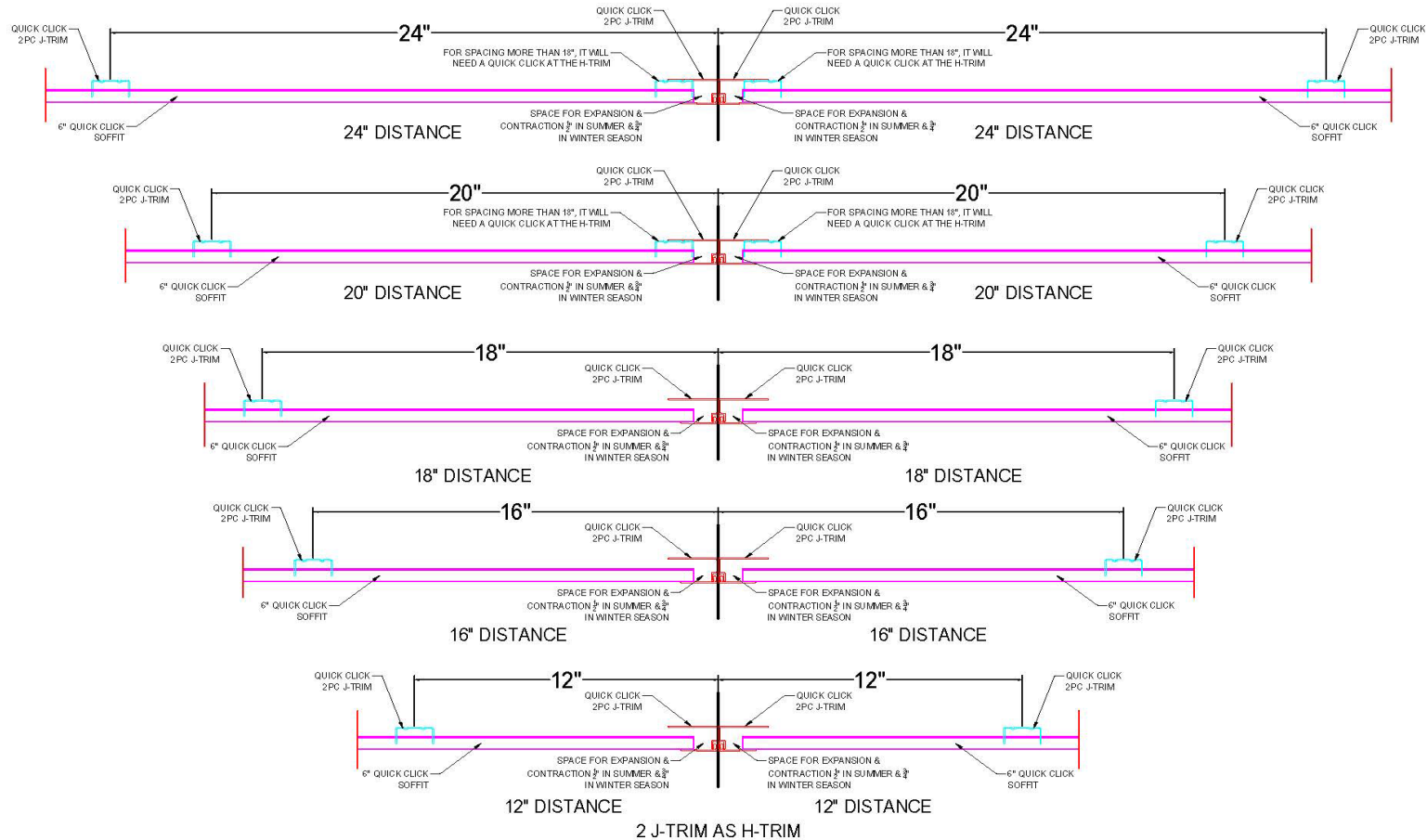
15.5 CD-01 Quick Click Soffit Parallel Install



15.6 Quick Click Soffit Track Spacing Guide on Parallel to the Wall Soffit Panel Install



15.7 Quick Click Soffit Track Spacing Guide on Parallel to the Wall Soffit Panel with H-Trim Install



QUICK CLICK TRACK SPACING GUIDE ON PARALLEL TO THE WALL SOFFIT PANEL WITH H-TRIM INSTALL



Revised July 30, 2025