

Installation Manual – Exterior Cladding



Revised: August 22, 2025

Supersedes July 30th, 2025.



Scan Code for Install Videos for both Soffits and Walls.

Table of Contents

1.0 BEFORE YOU BEGIN	4
2.0 FIRST STEPS FOR A SUCCESSFUL INSTALLATION	5
2.1 Transportation, Proper Handling & Storage	5
2.2 Tools, Materials and Cutting	6
3.0 BEST PRACTICE GUIDE	7
3.1 Fasteners	7
3.2 Essential Details	10
4.0 TEMPERATURE CHANGES & EXPANSION/CONTRACTION	12
4.1 Expansion Guide (by temperature shift)	12
4.2 Temperature Shift Example using ChamClad® products.	13
4.3 General Rules	13
4.4 Recommended Gap Allowance Temperature Guide	14
4.5 Guidelines	14
5.0 CARE AND MAINTENANCE OF CHAMCLAD® PRODUCTS	15
6.0 EXTERIOR ARCHITECTURAL WALL PANELS	17
6.1 PRODUCTS- 6" Classic Wall Panel ½" and Shadowline Series 1/2"	17
6.2 Exterior Wall Trims	18
6.3 Accessories	19
6.4 Trim Configuration	20
6.5 Panel & Trim Application	21
6.6 Wall & Vented Cavity Assembly	22
7.0 INSTALLATION-	23
7.1 Important Information / Before You Begin	23
7.2 Horizontal Installation	24
7.3 Vertical Installation	25
7.4 Typical Vertical Install Method	25
7.5 Alternate Vertical Install Method	26
8.0 ASSEMBLY DRAWINGS – HORIZONTAL	27
8.1 WS-03.1 Exterior Floor Detail 1	27
8.2 WS-05.1 Exterior Wall Head Detail 1	28
8.3 WS-03.2 Exterior Floor Detail 2	29
8.4 WS-05.2 Exterior Wall Head Detail 2	30

8.5 WS-03.3 Exterior Floor Detail 3	31
8.6 WS-05.3 Exterior Wall Head Detail 3	32
8.7 WS-03.4 Exterior Floor Detail 4	33
8.8 WS-05.4 Exterior Wall Head Detail 4	34
9.0 ASSEMBLY DRAWINGS – VERTICAL	35
9.1 WS-10A Balanced Wall For 6" Classic V-Groove Only	35
9.2 WS-10B Balanced Wall For 6" Classic U-Channel & Shadowline Series	36
9.3 WS-10.2 Exterior Wall Detail 6" Shadowline Wall Panel 1/2"	37
9.4 WS-10.3 Exterior Wall Detail 6" Shadowline Wall Panel with 3" Reveal 1/2"	38
9.5 WS-10.4 Exterior Wall Detail 12" Shadowline Wall Panel with 2" Reveal 1/2"	39
9.6 WS-10.5 Exterior Wall Detail 12" Shadowline Seamless Panel 1/2"	40

1.0 BEFORE YOU BEGIN

- ④ Read the install instructions completely. These installation instructions illustrate the “Best Practices” to install ChamClad® cladding and trim.
 - ChamClad® does not accept any liability or responsibility under their written warranty for product failure caused by improper installation.
- ④ To ensure you are up to date with the most recent install instructions, please visit our website <https://ChamClad.com> and view manual in conjunction with the technical bulletin advisory.
- ④ Our research and development team are committed to improving product durability and performance. As a result, specifications may change from time to time. Please check our website for updated technical information and profile drawings.
- ④ While this Installation Manual provides typical methods, tools, and techniques based on standard industry practices, it may not address every question or condition that could arise during installation. We encourage designers and installers to review these guidelines thoroughly and identify any site-specific conditions not covered. In such cases, please contact ChamClad® at engineering@chamclad.com, and our team will assist in developing a mutually satisfactory solution. It is the responsibility of the design authority and installer to ensure proper layout and compliance with relevant codes.
- ④ Occasionally, you may come across minor irregularities that happen naturally during the manufacturing process. This occurrence will not affect the aesthetics and performance of the product.
- ④ Periodically, you may encounter aluminum accessories where the ends need trimming due to the film shrinking back during the curing process. This occurrence will not affect the performance of the product.



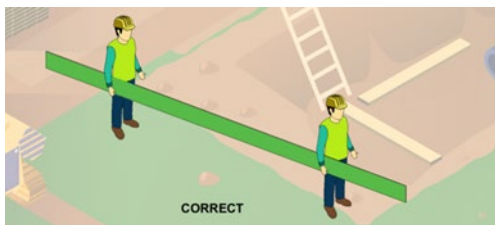
2.0 FIRST STEPS FOR A SUCCESSFUL INSTALLATION

Inspect all material for any breakage, defects, damage, and colour before installing. Do not install product that is questionable. Contact ChamClad® customer service or your dealer for assistance. Installing defective material may void your product Warranty.

Before installing ChamClad® cladding it is very important that installers read and understand the installation recommendations and topics covered in this manual.

2.1 Transportation, Proper Handling & Storage

- ☉ When transporting ChamClad® products, keep bags flat. The boards must be supported along the full length. Whenever possible avoid using metal banding. Metal banding will cut into the boards if pulled too tight. Materials are required to be inspected for any damage within 7 days of receipt, recorded on the Bill of Lading, and forwarded to info@ChamClad.com. ChamClad® warranty may be voided if damaged product is installed without prior inspection.
- ☉ Always carry ChamClad® cladding by holding it by the narrow edge and pick boards up in the center. ChamClad® pallets should not be stacked more than 2 pallets high and always stored on a flat surface.



- ☉ Products must be on a flat surface which supports the entire length of the boards and should be kept dry and out of direct sunlight (when possible). Do not store or place on asphalt or in areas prone to excessive heat buildup. Cover with a tarp leaving ends open to allow for airflow. Store away from areas where there may be falling objects or construction debris that could cause damage. If stacking product, please ensure it is stable.
- ☉ ChamClad® packaging is vented to limit the greenhouse effect. Do NOT store uninstalled panels in areas of excessive heat prior to installation; doing so may lead to product distortion.
- ☉ Note: It is important that product is not stored for long periods where temperatures could exceed 30 degrees Celsius (86 degrees Fahrenheit).

2.2 Tools, Materials and Cutting

POWER TOOLS AND HAND TOOLS



- ⊙ Always ensure you wear proper, appropriate and standard PPE when performing cutting and installation.
- ⊙ If using a circular saw, cut cladding face down on a clean surface.
- ⊙ If using a cut-off saw, cut face up
- ⊙ Carbide-tipped blades with 84+ teeth are recommended. (Aluminum blades are optimal)
- ⊙ Do not score or snap ChamClad® exterior cladding
- ⊙ Do not cut ChamClad® with coarse saw blade to avoid chipping or damaging the panel

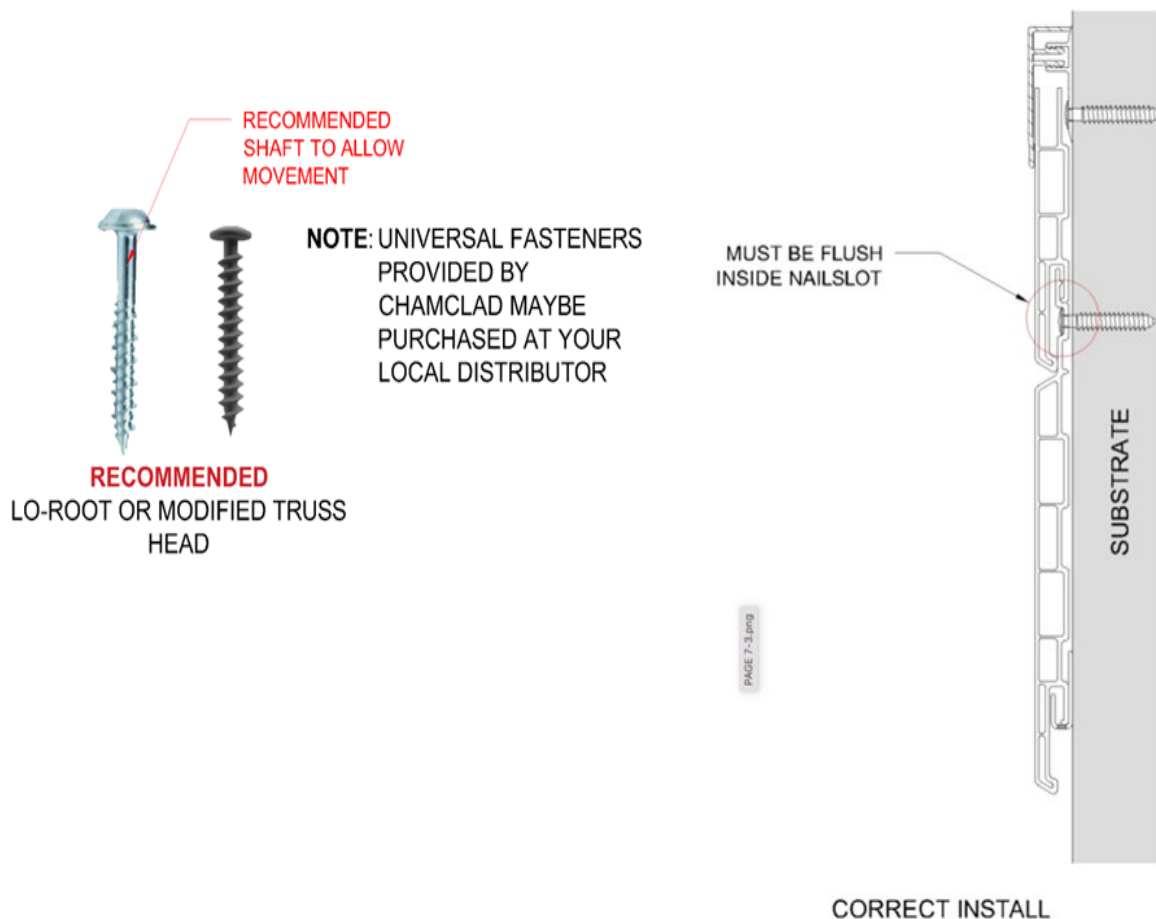
3.0 BEST PRACTICE GUIDE

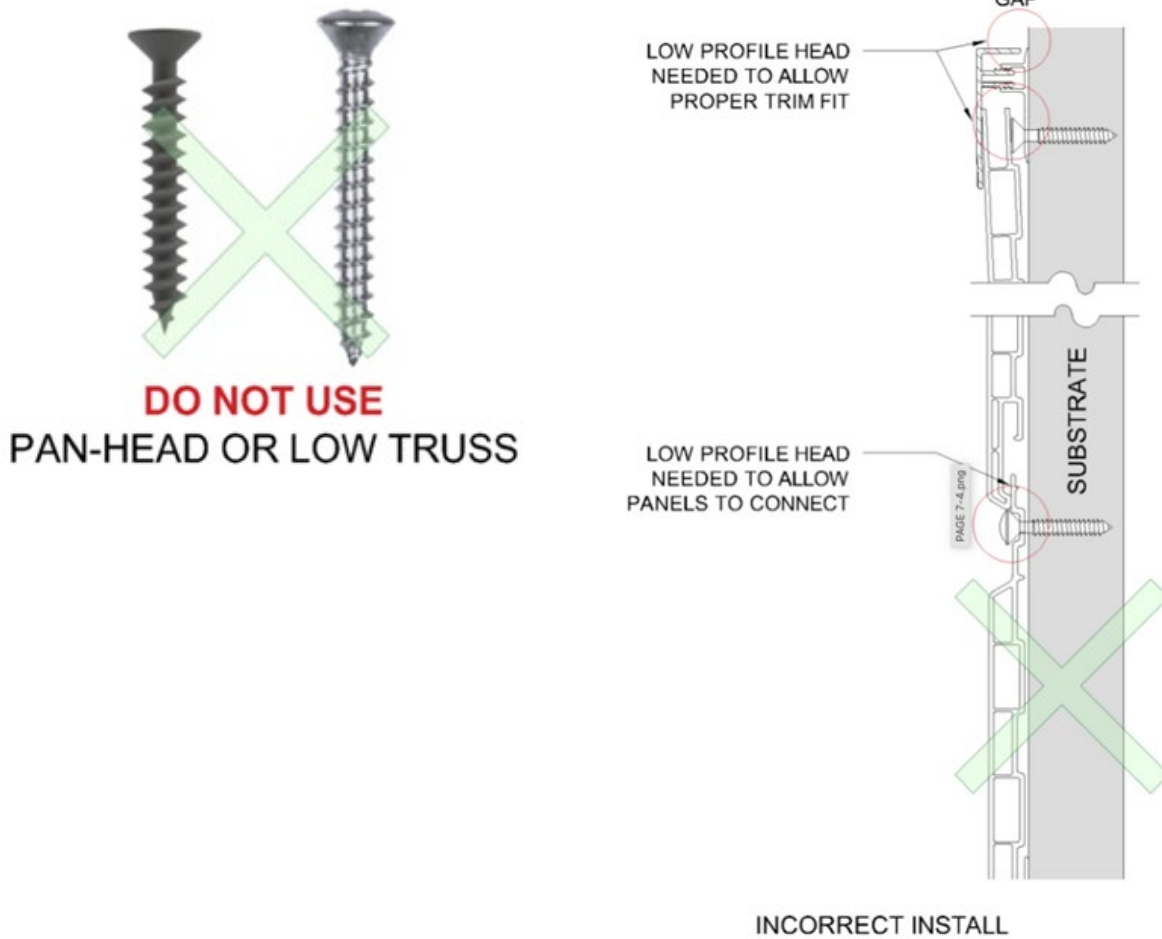
These installation instructions illustrate the “Best Practices” to install ChamClad® cladding, and trim. ChamClad® does not accept any liability or responsibility under their written warranty for product failure caused by improper installation.

It is the responsibility of the installer to observe the requirements of the local Building Code as they relate to installation in any given area. Most Building Codes are derived from National Building Codes. In Canada, the primary model is the National Building Code (NBC), which is published by the National Research Council of Canada (www.nrc-cnrc.gc.ca). In the United States, the primary model is based on the International Building Code (IBC), which produces the International Residential Building Code (IRC).

It is the responsibility of the builder or contractor, to understand the local code and how it pertains to the location where ChamClad® is being installed.

3.1 Fasteners





Fastener Size is critical to a successful ChamClad® installation. We recommend the following:

- ☉ Screws: It is strongly recommended to use ChamClad® universal self-tapping screws which are available from your local distributor or directly from ChamClad®.
- ☉ The fasteners must penetrate the wall to a minimum depth of 1 ¼" (32mm) and allow for the expansion and contraction of the ChamClad® products. If using metal furring strips, use of self-drilling screw is recommended (Modified truss quadrex coarse thread self-drilling screw #8-18 X 1 ½" (38mm)). You must pre-drill pilot holes when using ChamClad's universal self-tapping screws, when screwing into metal.
- ☉ If ChamClad® fasteners unavailable, use low profile, corrosion resistant or stainless-steel screws long enough to fasten through the pre-punched flange. Do not use electroplated fasteners. It is important that the fastener head can fit inside the nailing slot. Fastener heads that protrude outside of the nailing slot will hinder ChamClad® tongue and groove locking mechanism.
- ☉ When placing fasteners in the center of the designated nail slots, always leave a 1/32" (.8mm) gap between the fastener head and nail flange to allow ChamClad® panels expand/contract as needed.

Recommended Screw	
	#8-10 ChamClad Universal Self Tapping 1 ½" Screw #8 quad-drive 1 ½" (38mm)
	#8-10 ChamClad Universal Self Tapping 2 ¾" Screw #8 quad-drive 2 ¾" (70mm)
	#8- 18 ChamClad Universal Self Drilling 1 ½"
Examples of Alternate Screws:	
	Exterior Wall #8 1 ½" (38mm) 17 Self tapping Round Washer Lo-root
	Modified Truss Quadrex Coarse Thread Screw Self-Drilling #8 – 18 X 1 ½" (38mm)

Note: DO NOT USE a stapler, or nail gun for exterior cladding and soffit panel installation. GLUE IS NOT to be used to fasten strapping or ChamClad® exterior wall boards.

3.2 Essential Details

☉ Random ChamClad® Panel Pattern

ChamClad® wall panels are laminated with a repeating pattern (48" or 1.2m). ChamClad® makes every effort to ensure the patterns are mixed in each bag to minimize repeat patterns. It is suggested to randomly check panels at the job site for repeat patterns and adjust as required. To avoid excessive repetition when cutting boards 4' (1.2m) or less, use 2 boards with different patterns.

☉ Classic Panel (1 Panel, 2 Looks)

ChamClad® offers a simple tongue and groove system with the product stacking from the bottom up. For a U-Channel profile, insert to the first stop. For a V-Groove profile, take a non-marking rubber mallet and tap to the next stop. Does not apply for Shadowline Panel.

☉ Vented Cavity

ChamClad® exterior wall panels should be installed over a vented wall cavity assembly with furring strips/ strapping, galvanized steel Z-girts (min. 20 ga.), or a continuous 3-dimensional membrane, in accordance with local Building Code requirements. All panels must be fastened every 16–24" (400–600mm) on center. To ensure proper installation and meet warranty requirements, refer to CCMC/ICCES evaluations for assembly requirements. For alternate cavity solutions, contact engineering@chamclad.com.

☉ Exterior Rigid Insulation

When installing ChamClad® exterior cladding over rigid insulation, it is critical that all fasteners penetrate through the insulation and securely anchor into the structural substrate (e.g., wood or steel framing). The preferred method is installing furring (strapping) over the face of the rigid insulation and attaching cladding directly to the furring, which provides both a vented cavity and the necessary structural support.

Installers are responsible for ensuring that the wall assembly, fasteners, and anchoring methods are compatible with the project requirements and comply with local Building Codes. Failure to properly secure the cladding to a structural substrate may compromise the performance and safety of the system. For alternate application, contact engineering@chamclad.com

☉ Wall Flashings and Penetrations

Windows, doors, and utility penetrations must be flashed and trimmed properly. It is the responsibility of the installer/designer/builder to ensure it is done to local codes and best industry practice. If sealants are required, ChamClad® recommends ASTM 920 Elastomeric Joint Sealants (e.g., Tremco Spectrum 2).

☉ 2PC Trim - Vertical Installation

When installing 2pc trims vertically (2PC Outside Corner, 2PC J-Trim, 2PC H-Trim), in order to prevent downward migration, it is recommended to fasten the base trim at the highest point of

the nail slot with all other fasteners located in the centre of the remaining slots (every 8-12" (200-300mm)).

Before applying the top cap, it is recommended to add a small dab of sealant (1" or 25mm) between the teeth at the top and bottom of the base trim. This is especially important around doors and windows where you are not completing a full perimeter wrap.

Aluminum Trim - Film Shrink Back

Occasionally, you may encounter aluminum accessories where the ends need trimming due to the film shrinking back during the curing process. This occurrence will not affect the performance of the product.

Compatibility

ChamClad® products should not be stored in bags on asphalt surfaces, such as driveways or roads, before installation or left on asphalt for extended periods. Prolonged exposure to asphalt can cause it to leach into the panels, potentially weakening or discoloring them. If ChamClad® products are exposed to asphalt, clean them immediately using a non-solvent cleaning product. Instead, opt for storage on grass, in a garage, or in a shaded area.

4.0 TEMPERATURE CHANGES & EXPANSION/CONTRACTION

It is important to remember that ChamClad® materials will expand and contract with regular temperature changes. ChamClad® trims allow for any variance in panel lengths due to expansion/contraction.

When placing fasteners in the center of the designated nail slots, always leave a 1/32" (.8mm) gap between the fastener head and nail flange to allow ChamClad® panels expand/contract as needed.

The below guide provides expansion/contraction examples based on different panel lengths and temperature fluctuations.

4.1 Expansion Guide (by temperature shift)

Temperature Change in °C and °F		Length of panels (feet)				Length of panels (meters)			
°F	°C	12'	20'	30'	35'	3.7m	6m	9m	10.7m
50	10	0.10"	0.17"	0.25"	0.29"	2.5mm	4.3mm	6.3mm	7.4mm
68	20	0.20"	0.34"	0.50"	0.59"	5mm	8.6mm	13mm	15mm
86	30	0.30"	0.50"	0.75"	0.88"	7.6mm	13mm	19mm	22.3mm
104	40	0.40"	0.67"	1.01"	1.17"	10.2mm	17mm	25.6mm	29.7mm
122	50	0.50"	0.84"	1.26"	1.47"	13mm	21.3mm	32mm	37.3mm
140 (optimal gap)	60	0.60"	1.01"	1.51"	1.76"	15.2mm	25.6mm	38.3mm	44.7mm
158	70	0.70"	1.17"	1.76"	2.05"	17.8mm	29.7mm	44.7mm	52mm
176	80	0.80"	1.34"	2.01"	2.35"	20.3mm	34mm	51mm	60mm
ChamClad®'s Coefficient of linear expansion (CLE): 0.0000698		Total Expansion/ contraction per panel (inches)				Total Expansion/ contraction per panel (millimeters)			

4.2 Temperature Shift Example using ChamClad® products.

The change in length of ChamClad® panels due to temperature fluctuations is influenced by three key factors.

- 1. The Coefficient of Linear Expansion (CLE):**

For ChamClad® Panels, the CLE is 0.0000698 in/in/°C.

- 2. Original Length of the Panel:**

The length of the panel at the time of installation.

- 3. Net Temperature Change**

The difference between the installation temperature and the ambient temperature during use.

Expansion/Contraction Formula

To calculate the change in length of a ChamClad® panel, use the following formula:

Change in Length (in inches) =

(Original Length in inches) × (Temperature Change in °C) × (CLE)

Example

A 12 ft (144") ChamClad® panel is installed at **20°C (68°F)** and later exposed to **0°C (32°F)**.

Calculation:

$144 \times 20 \times 0.0000698 = 0.20$ inches (approximately 7/32")

The panel will contract by 0.20 inches, resulting in a new length of 143.80 inches. When the temperature returns to 20°C (68°F), the panel is expected to expand back to its original length of 144 inches.

4.3 General Rules

Based on a temperature change of 40°C (104°F), for example: 0°C (32°F) in cooler months and reaching 40°C (104°F) in warmer months:

- ☺ General rule of thumb, in summer and winter months.
 - **For panels up to 16' (4.9m)** leave a gap on each side of 1/2" (13mm)
 - **For panels up to 24' (7.3m)** leave a gap on each side of 5/8" (16mm)
 - **For panels 25' (7.6 m) and longer**, always pin at the midpoint by fastening directly through the nail rail (not the slot center). To determine the gap, use the distance from the pin to the panel end (half the total panel length) and refer to the gap chart below (page 14)
 - **Gaps 5/8" or greater**, we recommend using larger faced trims to allow for expansion and contraction (3.5" 2pc Finish Trim, 3.5" 2pc Outside Corner, larger faced H-Trim).

It is imperative that ChamClad® panels are cut to fit the coverage of trim pieces.

The temperature the day of installation factors into the expansion and contraction gap you leave. If installing on a cooler day allow for more expansion and a larger gap, if installing on a warmer day allow for less expansion and a smaller gap. The below guide provides recommended spacing based on temperature and panel length.

4.4 Recommended Gap Allowance Temperature Guide

OUTSIDE TEMP.		GAP PER SIDE (inches)					GAP PER SIDE (Millimeters)				
°F	°C	≤ 12'	16'	20'	25'	30'	≤ 3.6m	4.9m	6.1m	7.6m	9.1m
14	-10	3/8	1/2	5/8	3/8	1/2	9	13	16	19	22
32	0	3/8	7/16	1/2	3/8	7/16	9	11	13	16	19
50	10	5/16	3/8	7/16	5/16	3/8	8	9	11	13	16
68	20	1/4	5/16	3/8	1/4	5/16	6	8	9	11	13
86	30	3/16	1/4	1/4	3/16	1/4	5	6	6	8	9
104	40	1/8	3/16	3/16	1/8	3/16	3	5	5	5	6

4.5 Guidelines

- ☉ Take into consideration the temperature on date of installation and season you are installing in.
- ☉ Installation in weather colder than -10°C (14°F) is not recommended due to potential chipping or cracking of the panels. Should that occur warranty may be voided.

It is important to acclimate panels and accessories for a minimum of 24 hours prior to installation.

5.0 CARE AND MAINTENANCE OF CHAMCLAD® PRODUCTS

ChamClad® products are designed to be low maintenance, and our laminate films have exceptional properties that ensure ease of cleaning and surface longevity. They are highly ultra-violet, scratch, and salt air resistant. The film's low surface tension makes it inherently dirt-repellent and therefore easy to clean. ChamClad® finishes include anti-graffiti properties and, in most cases can be easily removed using a garden hose and mild kitchen detergent and warm water.

To preserve the lifespan of your ChamClad® product and maintain its warranty, regular cleaning and inspection are essential.

- ☉ Minimum Cleaning Frequency: In normal or urban environments, we recommend cleaning your ChamClad® product every 12-18 months.
- ☉ High-Exposure Areas: In areas subject to high pollutants, such as industrial or coastal environments, we recommend cleaning your ChamClad® product every 8-12 months.
- ☉ Regular Inspections: Inspect the product frequently and promptly remove any debris or contaminants such as bird droppings. Prolonged contact with such materials may lead to staining, uneven wear, or surface damage.

Refer to the recommended maintenance guidelines below to ensure optimal care for your ChamClad® product.

General Cleaning:

- ☉ You may clean the surface with a soft cloth, sponge or soft bristle brush and a neutral detergent. It is recommended to use ChamClad® Product Cleaner (supplied by ChamClad®) and/or a soap, or liquid cleaner (in non-concentrated form) such as Simple Green. Follow with a thorough rinsing of fresh water to ensure all cleaner has been removed.
- ☉ If marking has occurred from board-to-board friction, you may clean it with a soft cloth soaked in water and soap. Allow the cloth to sit on the area for 60 seconds. Panels should be rinsed thoroughly with clean water.
- ☉ To avoid streaking start at the top of the wall – working your way to the bottom.
- ☉ You may pressure wash ChamClad® panels with a low PSI pressure washer. DO NOT exceed 1500 PSI.

DO NOT:

- ☉ Do not use solvents when cleaning panels. Solvents may damage the protective layers in the film.
- ☉ Do not wash panels with a pressure washer at close range.
- ☉ Do not use abrasive, erosive, or caustic solvents to clean ChamClad® panels as they can dull and/or damage the panel finish and will void the warranty.

Should you experience removal difficulties, please contact us via email at info@ChamClad.com



6" Classic Classic Wall Panel Toffee

CHAMCLAD® EXTERIOR CLADDING

Horizontal & Vertical



6" Classic Classic Wall Panel Harvest Walnut

6.0 EXTERIOR ARCHITECTURAL WALL PANELS

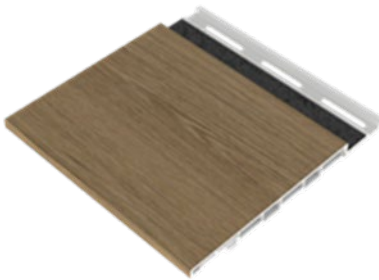
6.1 PRODUCTS- 6" Classic Wall Panel 1/2" and Shadowline Series 1/2"



6" Classic Wall Panel 1/2"
12', 16' & 20' Lengths
150mm x 13mm



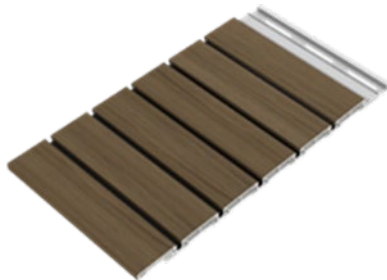
6" Classic Wall Panel 1/2"
is one panel with two profiles.
U Channel & V Groove



6" Shadowline Wall Panel 1/2"
12', 16' & 20' Lengths
150mm x 13mm



6" Shadowline with
3" Reveal Wall Panel 1/2"
12', 16' & 20' Lengths
150mm x 13mm



12" Shadowline with
2" Reveal Wall Panel 1/2"
12' & 16' Lengths
300mm x 13mm



12" Seamless Shadowline Wall Panel 1/2"
12' & 16' Lengths
300mm x 13mm

6.2 Exterior Wall Trims



***2PC Exterior J-Trim 2"**
12' & 20' Lengths



***2PC Exterior J-Trim 3.5"**
12' & 20' Lengths



1PC Exterior Inside Corner Trim 4"
10', 12', & 20' Lengths



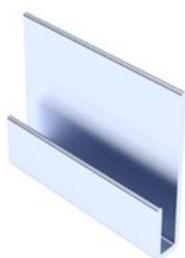
***2PC Exterior Outside
Corner Trim 2"**
10' & 20' Lengths



***2PC Exterior Outside
Corner Trim 3.5"**
10' & 20' Lengths



2PC Exterior H-Trim 2.75"
12' & 20' Lengths



Aluminum Starter Strip 1/2"
12', 16', & 20' Lengths

***THESE TRIMS ARE AVAILABLE IN ALL ALUMINUM OR HYBRID COMBINATIONS**

Metric Conversion Chart

Feet	Meters
10'	3m
12'	3.6m
16'	4.9m
20'	6.1m

Inches	Millimeters
1.5"	38mm
2"	50mm
2.75"	70mm

6.3 Accessories



Spray Bombs

Colour matched Spray Paint.

Recommended for use with the Column Wrap Trims or any larger surface areas.



Touch Up Pens

PREPARATION: The areas to be touched up must be dry and free from dust, dirt, and grease. Before each use, shake Pen for approximately 30 seconds. Rattle of mixing balls must clearly be heard.

DE-AERATION: Due to exterior influences (heat) an overpressure may develop. To prevent blotching, the pen must be de-aerated. Put pen with tip pointing downwards onto a solid, non-soaking surface and press down – hold for 2 seconds, release and repeat procedure until tip is filled with touch- up (7-10 times may be necessary).

APPLICATION: Touch down pen tip at a flat angle (about 45 degrees) using light pressure. The valve opens and touch-up flows continuously. With the new designed tip, you can work precisely on hard-to- reach areas. Different stroke widths can be easily applied. Touch up rapidly with one stroke using light pressure. **Important: Do not apply another coat of touch up until first coat has dried (approximately 3-5 minutes).** If opacity decreases, shake pen again and de-aerate as described above. If touch-up flow decreases, simply pump again. Put cap on immediately after use – cap has to snap with a “click”. Over time, tip may become blocked with pigment sediments. If this occurs, replace tip with a new one, shake Pen well and repump.

***Do not let pens freeze**



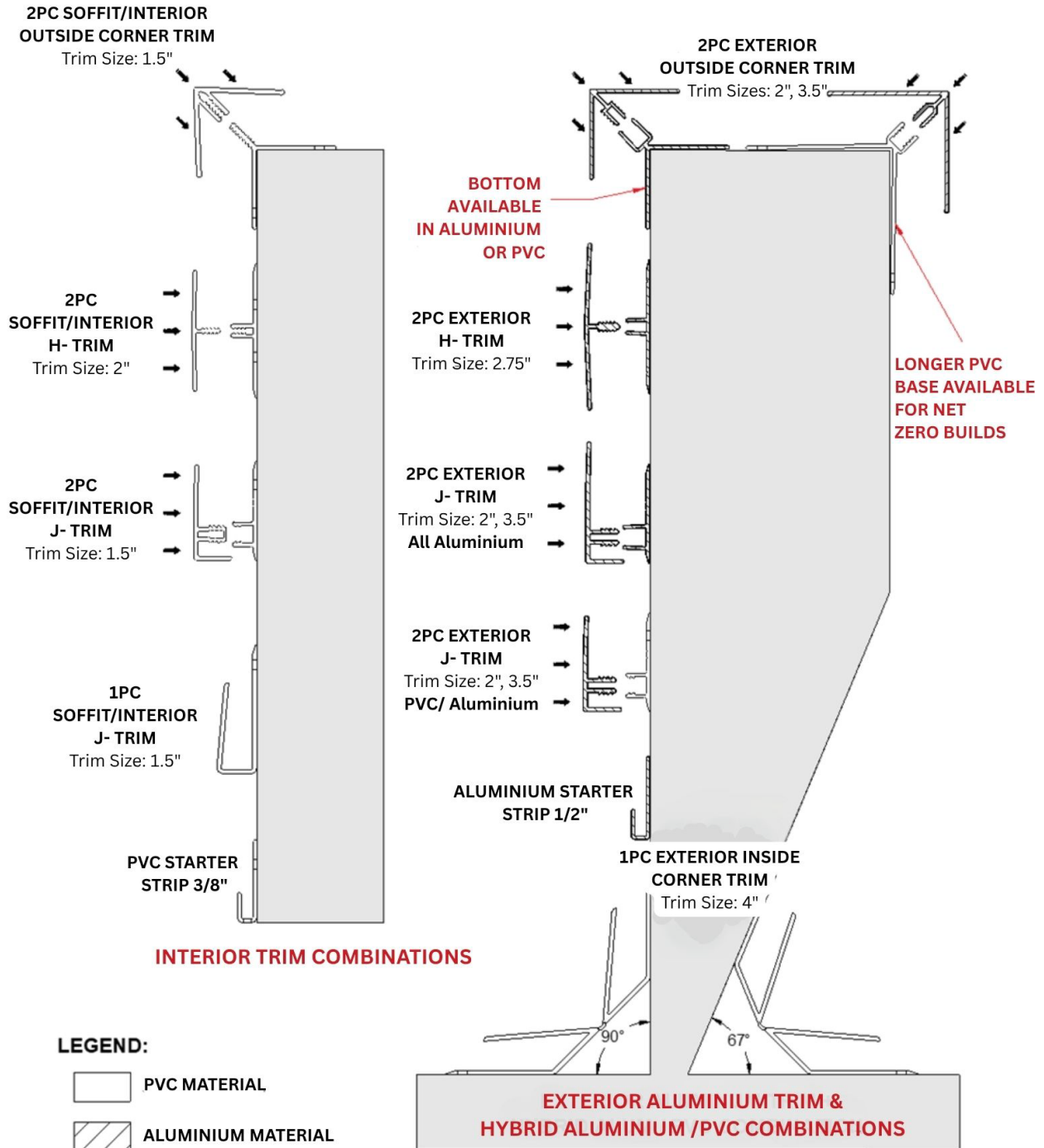
Product Cleaner

ChamClad® non- solvent cleaner is designed to effectively remove dirt, debris and other surface contaminants from wall panels, and related components.

6.4 Trim Configuration

TRIMS-Install bottoms at entire perimeter, followed by wall panel and finish with trim cap install.

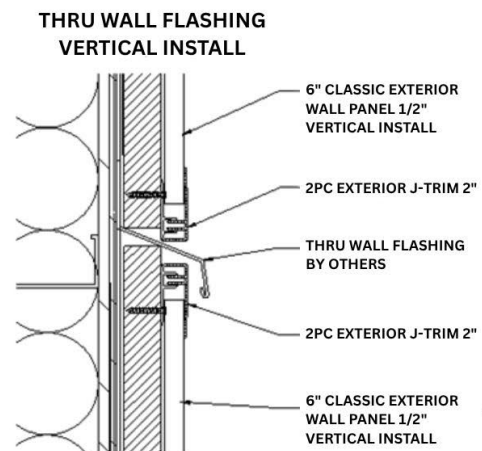
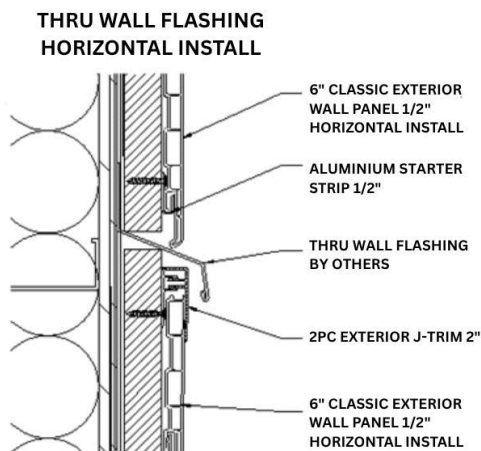
NOTE: Use a non marking rubber mallet or hammer & block if required.



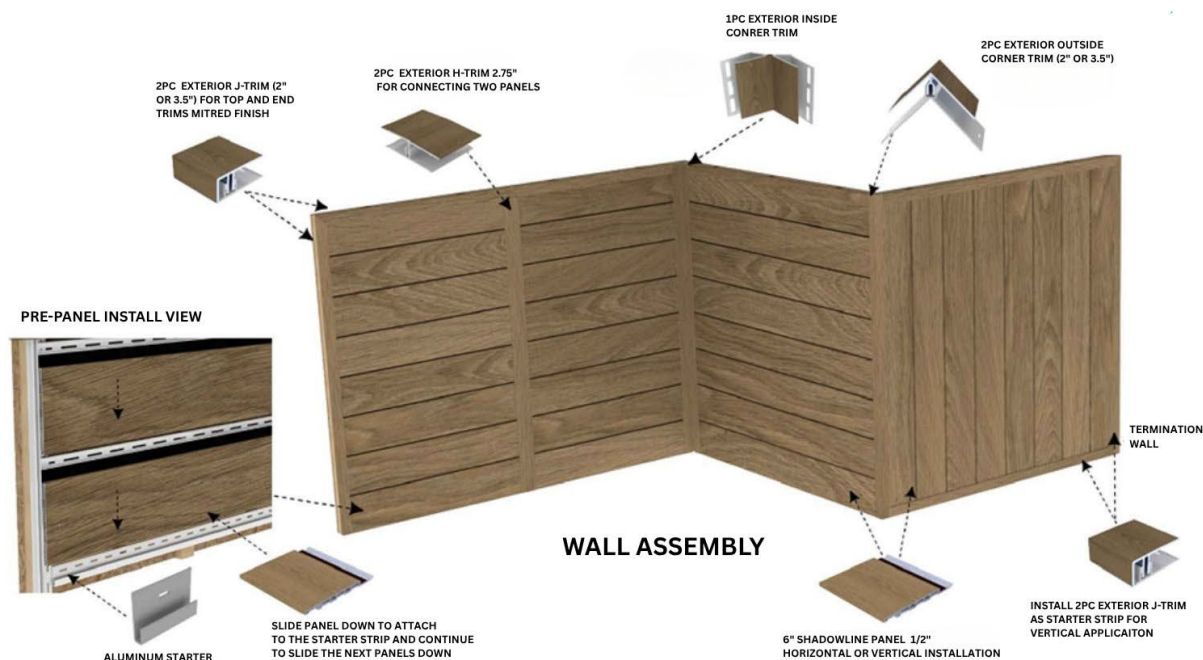
6.5 Panel & Trim Application



- OUTSIDE CORNER TRIM:** Location - Outside Corners of Installation Area
Detail - 2" & 3.5" Outside Corner for Horizontal or Vertical Application. 3.5" is recommended for lengths over 24 ft.
- INSIDE CORNER TRIM:** Location - Inside corners, ceiling panels and curved walls
Detail - 4" Flexible PVC with 180° angle. For exterior, interior wall and ceilings. Horizontal and vertical application.
- 2PC J-TRIM:** Location - Outer edges, window & door trim, along gable end walls, floor and ceiling.
Detail - 2" & 3.5" J-Trim for horizontal, vertical application and termination walls. 3.5" recommendation for length over 24 ft. Miter cut ends for clean finish.
- 2PC H-TRIM:** Location - To join panels together. **BUTT JOINTS ARE NOT PERMITTED**
Detail - 2.75" Aluminium H-Trim for horizontal, vertical, wall and soffit application. 2" PVC for soffit and interior application only.
- STARTER STRIP:** Location -To start panel on horizontal application & for center wall back-to-back for vertical install for equal width ends
Detail - Aluminium for 1/2" panels and must be drilled for drainage holes. PVC for 3/8" panels are available with pre-drilled holes.
- THRU WALL FLASHING:** Location - Compression joints on floor elevations.
Detail - Used for movement (expansion and contraction) in building between floors.

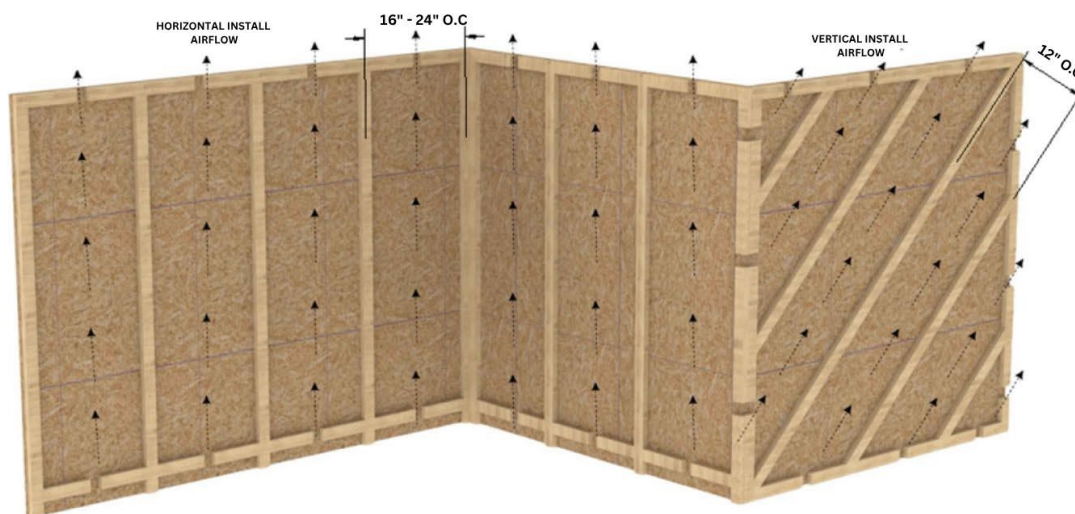


6.6 Wall & Vented Cavity Assembly



TRIMS-Install bottoms at entire perimeter, followed by wall panel and finish with trim cap install.

WALL ASSEMBLY- Panels can be installed horizontally or vertically over a vented cavity.



VENTED WALL ASSEMBLY- We strongly suggest installing ChamClad products over a vented cavity. Refer to [3.2 Essential Details](#) in manual for additional information.

7.0 INSTALLATION-

6" Classic, 6" and 12" Shadowline Series, and 12" Shadowline Seamless- Exterior Wall Panels

7.1 Important Information / Before You Begin

- ⊗ Acclimate panels and accessories for a minimum of 24 hours prior to installation. With each course of ChamClad® panels, proper gaps must be left between the end of the wall panel and the track of the base trims for expansion and contraction.
 - **Refer to the gap allowance temperature guide chart on page 14 and guidelines before beginning.**
- ⊗ 12" x 1/2" (300mm x 13mm) Shadowline Seamless panel can be mixed and matched with our Shadowline Series.
- ⊗ DO NOT BUTT JOIN WALL BOARDS – an H-Trim **MUST** be used. Leave a proper gap inside the H-Trim to allow for expansion and contraction (refer to gap allowance temperature chart on page 14). Do not install the H-Trim top cap until all wall panel courses are up.
- ⊗ Installation in weather colder than -10°C (14°F) is not recommended due to potential chipping or cracking of the panels. Should that occur, warranty may be voided.
- ⊗ Steel stud framing, associated sub girts and fasteners to be installed as designated by the appropriate design professional. A minimum of 20 gauge or lower **MUST** be used and installed 16-24" (400mm–600mm) O.C.
- ⊗ Except where designated in this manual, it is critical that fasteners are installed in the manufacturer's pre-drilled holes. If you need to apply a fastener and it is in a section that does not have a manufacturer's pre-drilled hole, you **MUST** pre-drill a nail slot (using a nail slot punch) to allow the panel to expand and contract without restriction.
- ⊗ All exterior panels may be used for interior applications. Refer to Interior Wall and Ceiling installation manual for detailed instructions.

Note: DO NOT USE a stapler, or nail gun for exterior cladding and soffit panel installation

Note: GLUE IS NOT to be used to fasten strapping or ChamClad® exterior wall board

7.2 Horizontal Installation

Refer to Assembly Drawings on pages 27 to 34 for additional information.

- ④ Use a level to produce a guideline around the entire building and mark with a chalk line.
 - Snap line where the starter strip will be installed.
- ④ Install a starter strip fastening every 12" (300mm) leaving a 1/32" (.8mm) gap from fastener head to nail flange to allow for horizontal expansion and contraction. Install panel 2" (50mm) above grade or 1/2" (13mm) above concrete (set starter strip accordingly) following local building codes.
- ④ Install flashing and trim bases around windows, doors, utility box fixtures, and all other penetrations through the wall cladding. We recommend all ChamClad® accessories be fastened every 8-12" (200mm-300mm) 8" (200mm) in high heat or wind exposure areas. It is common industry practice to align all vertical and horizontal trims on the same wall to ensure a visually clean look.
- ④ Fasten all panels 16-24" O.C. (400mm x 600mm) starting within 4" (100mm) from both ends of panel. Ensure that screws are placed in the middle of the nail slots to allow for proper expansion and contraction. **For panels over 25' (7.6m) - Pin Panel at centre of nailing fin and not in nailing slots to equalize expansion and contraction.** See gap chart and guidelines on page 14.
- ④ Begin installing your bottom courses of wall panels using ChamClad® universal screws. **When installing panel lengths 20' (6.1m) and over, it is recommended to use the large, faced trims to allow for appropriate expansion and contraction. Check every three or four courses to ensure that wall panels are level and that adjacent panels are aligned horizontally.**
- ④ Except where designated in this manual, fasteners must be placed in and through the **center** of the nail slot. The fastener must be installed straight and not at any angles. The head of the screw or crown should allow for the thickness of a dime (roughly 1/32" .8mm) behind the face of the mounting hem to allow for expansion and contraction of the wall panels.
- ④ When installing final top horizontal panel, trimming the full length of the panel at a 45-degree angle may ease installation of last panel. Oversized nail slots must be added manually.
- ④ If you need to apply a fastener in a section that does not have a manufacturers pre-drilled hole, you **MUST** pre-drill a nail slot to allow the panel to expand and contract without restriction. (Nail slot punch may be used).

- ⦿ Application of all 2PC trim top caps is the last step to completing wall panel installation. Ensure not to overdrive the trim tops to the point where panels can no longer expand and contract due to tightness.

7.3 Vertical Installation

Refer to Assembly Drawings on pages 35 to 40 for additional information.

NOTES:

- Attach vertical claddings and trims using ChamClad® universal Screws. Screws must penetrate structural framing members.
- Install vertical exterior cladding to structural framing members when using non-structural sheathing, drywall, or foam. Install exterior cladding a minimum of 2" (50mm) above finished grade or as per local building codes. Allow 1/2" (13mm) above deck or concrete.
- At every floor level, it is **recommended** to break the installation using a thru-wall flashing (supplied by others) or a ChamClad® H-Trim and restart following steps above. The first course of vertical cladding ends in the bottom of the H-Trim with the second course starting in the top of the H-Trim following the steps listed above. Always confirm local building code requirements.

7.4 Typical Vertical Install Method

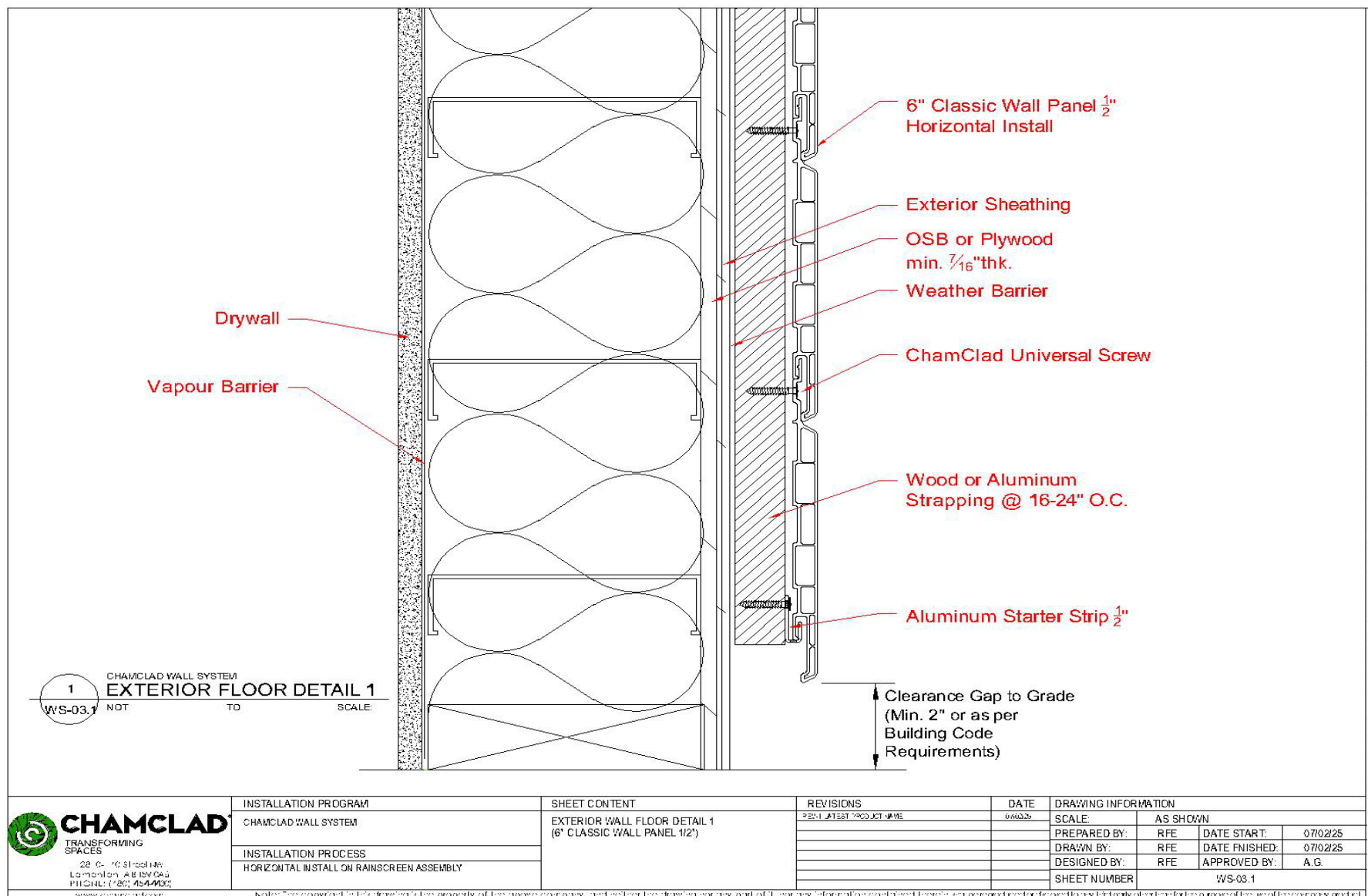
- ⦿ Properly installed vertical siding should have a balanced look. Working from left to right, plan the panel layout carefully. If you were to draw a vertical line down the center of the wall, there would be an equal number of panels on both sides. If trimming panels is necessary for a proper fit, the outermost panels should have the same width.
- ⦿ To achieve this balanced appearance, distribute the remaining space evenly at both ends of the wall. For instance, if a wall requires 25 full panels plus and additional 10" (250mm), you will cut two 5" (125mm) sections to create the end panels.
- ⦿ ***We recommend this method for the 6" Classic U-Channel and 6" and 12" Shadowline Series, and 12" Shadowline Seamless to best achieve a balance appearance.**

7.5 Alternate Vertical Install Method

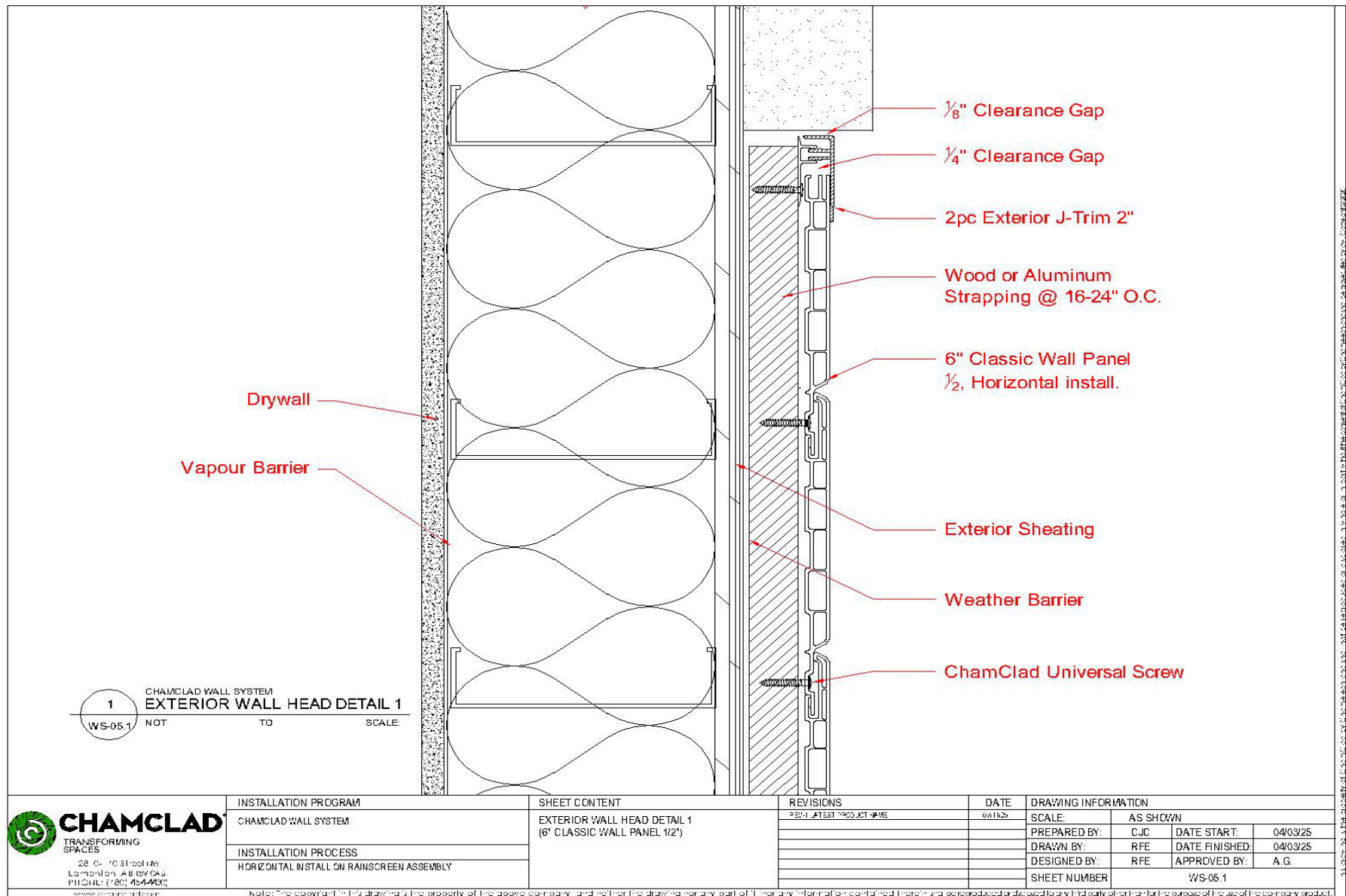
- ④ Determine the center of the wall and install 2 starter strips back-to-back (spaced 1 7/8" 48mm apart) and 1" (25mm) above the universal J Trim, fastening every 12" (300mm). Ensure proper vertical backing is behind starter strips. (See drawing #WS-10A on page 36)
- ④ Begin panel installation by positioning first panels into starter strips (2PC J- Trim acting as the starter) (working outward from wall center in both directions). It is good practice to fasten at the highest point of the nail slot at the top of each panel to limit downward migration. Balance of screws to be fastened in the center of nail slots and should allow for the thickness of a dime (1/32" .8mm) between the screw head and the face of the nail slot.
- ④ ***We recommend this method for the 6" Classic V-Groove installation to best achieve a balance appearance. See assembly drawings on page 36.**
- ④ To install vertical cladding, position strapping/furring horizontally or diagonally (at a 45° angle) at 12" (300mm) O.C. If horizontal, leave 2" (50mm) gaps between straps every 3'-4' (1m – 1.2m) to allow any envelope moisture to escape. A continuous, 3-dimensional membrane with a vertical drainage cavity may also be used. (follow manufacturers recommended install procedures). Always check and follow local Building Codes.
- ④ Snap a level chalk line around the base of the building and install the 2PC J-Trim as the starter strip, fastening it every 8-12" (200mm-300mm). For optimal results, we recommend using all aluminum or aluminum/PVC hybrid combinations when installing the 2PC J-Trim.
- ④ Continue installing bases of all 2PC Outside Corners, H-Trims and 2PC J-Trims, fastening every 12" (300mm). **Please note all 2PC trims require solid backing.** We recommend all ChamClad® vertical panels and accessories be fastened every 12" (300mm).
- ④ To complete the install, apply the top caps of all 2PC trims using a non-marking rubber mallet tapping gently until it locks in place. Do not over drive the trim top cap to the point where the panels can no longer expand and contract due to tightness. Note: All 2PC trims must have equal length base and top to support the trim top and ensure full length engagement.
- ④ ChamClad® exterior panels may be used in a post or column wrap application. (Refer to Column, Beams & Privacy Wall / Screens Install Manual for complete installation details).

8.0 ASSEMBLY DRAWINGS – HORIZONTAL

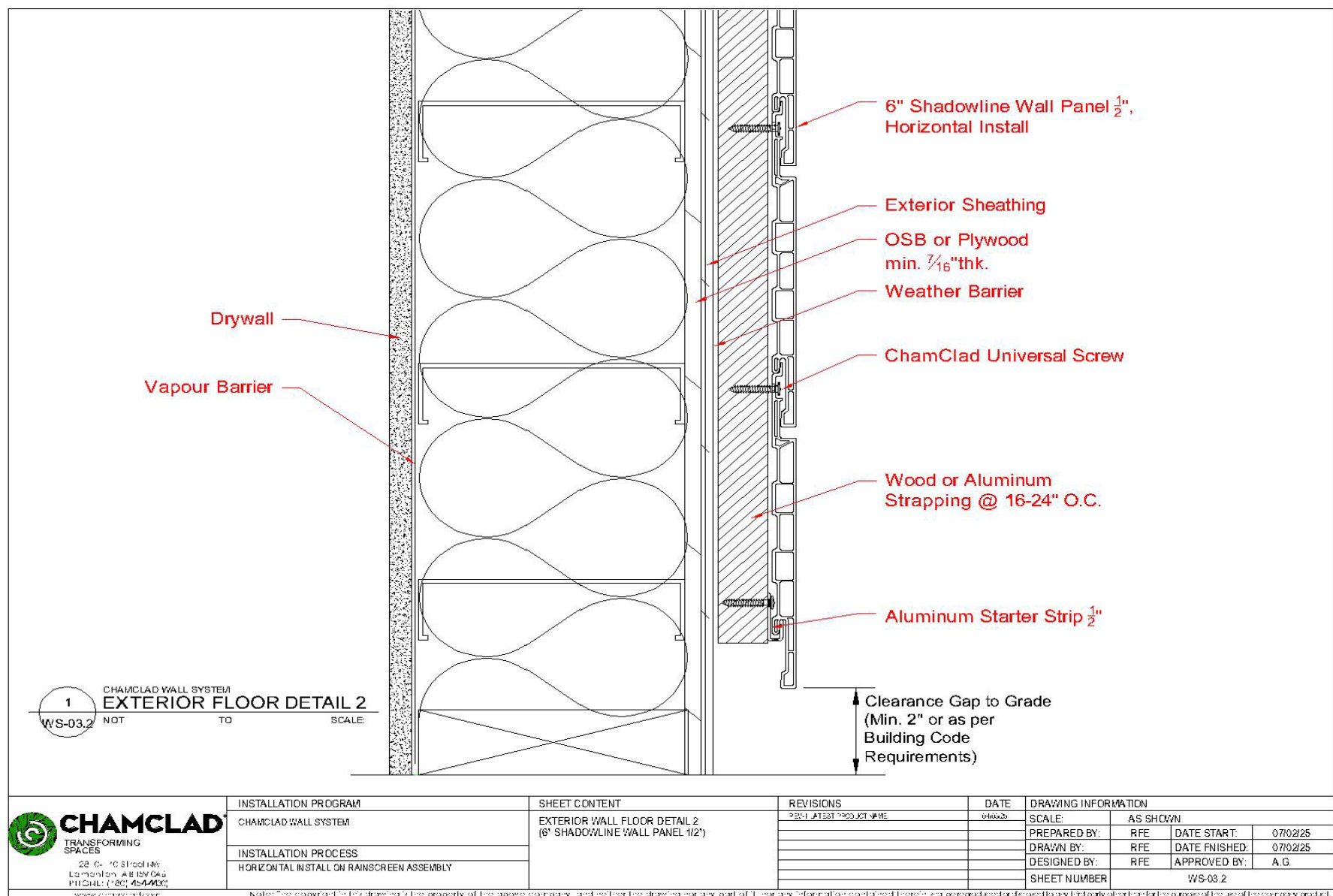
8.1 WS-03.1 Exterior Floor Detail 1



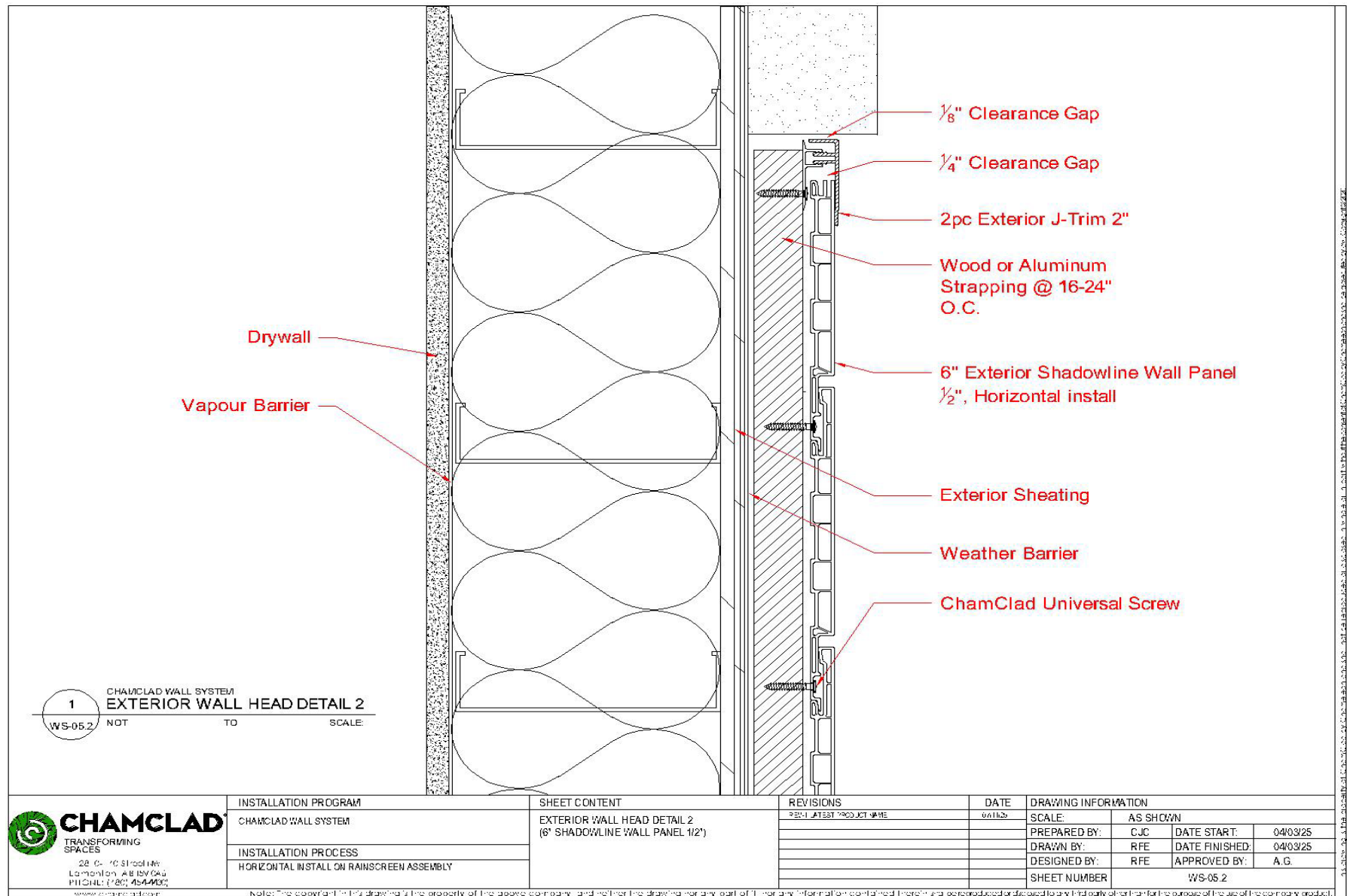
8.2 WS-05.1 Exterior Wall Head Detail 1



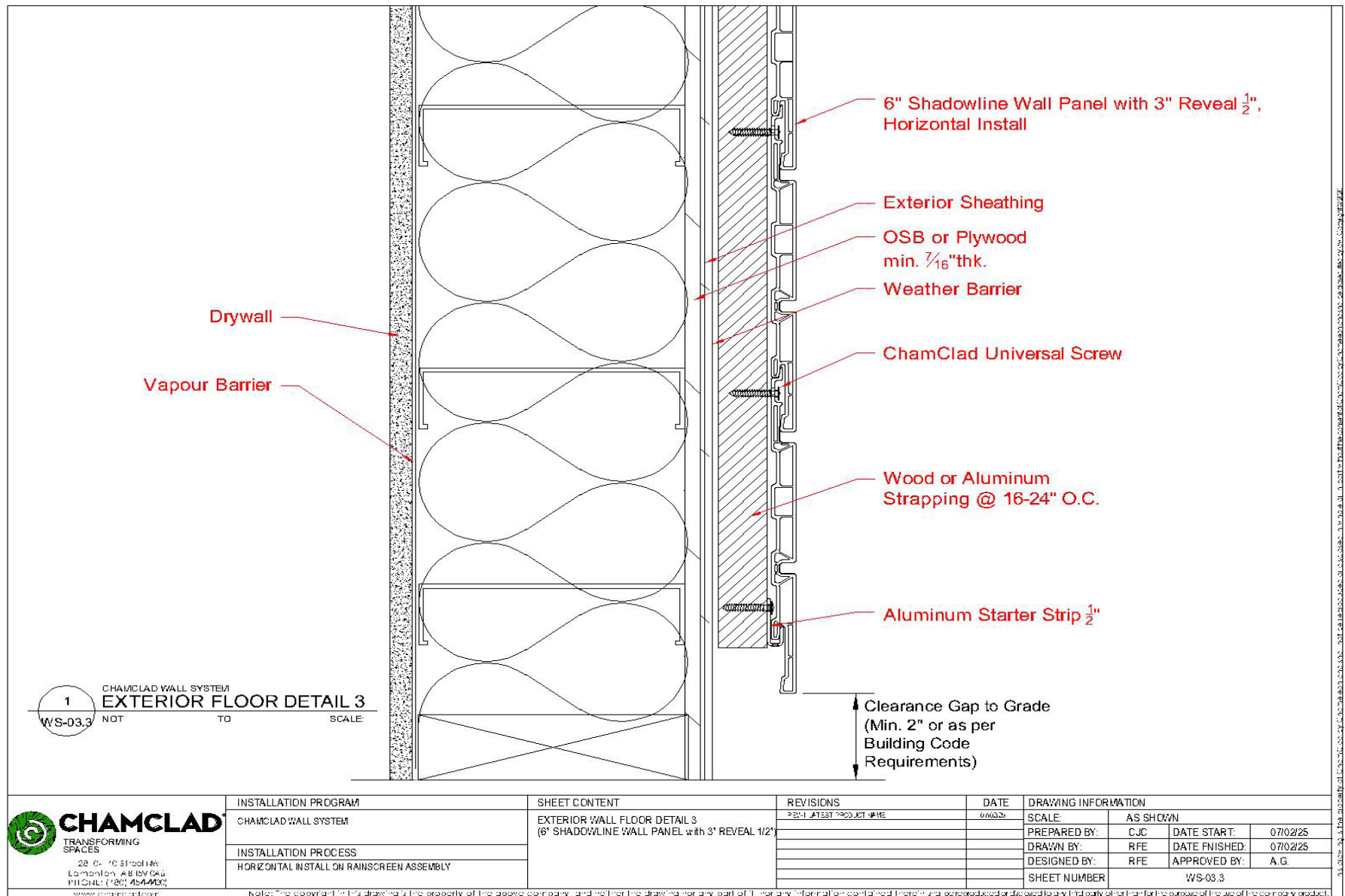
8.3 WS-03.2 Exterior Floor Detail 2



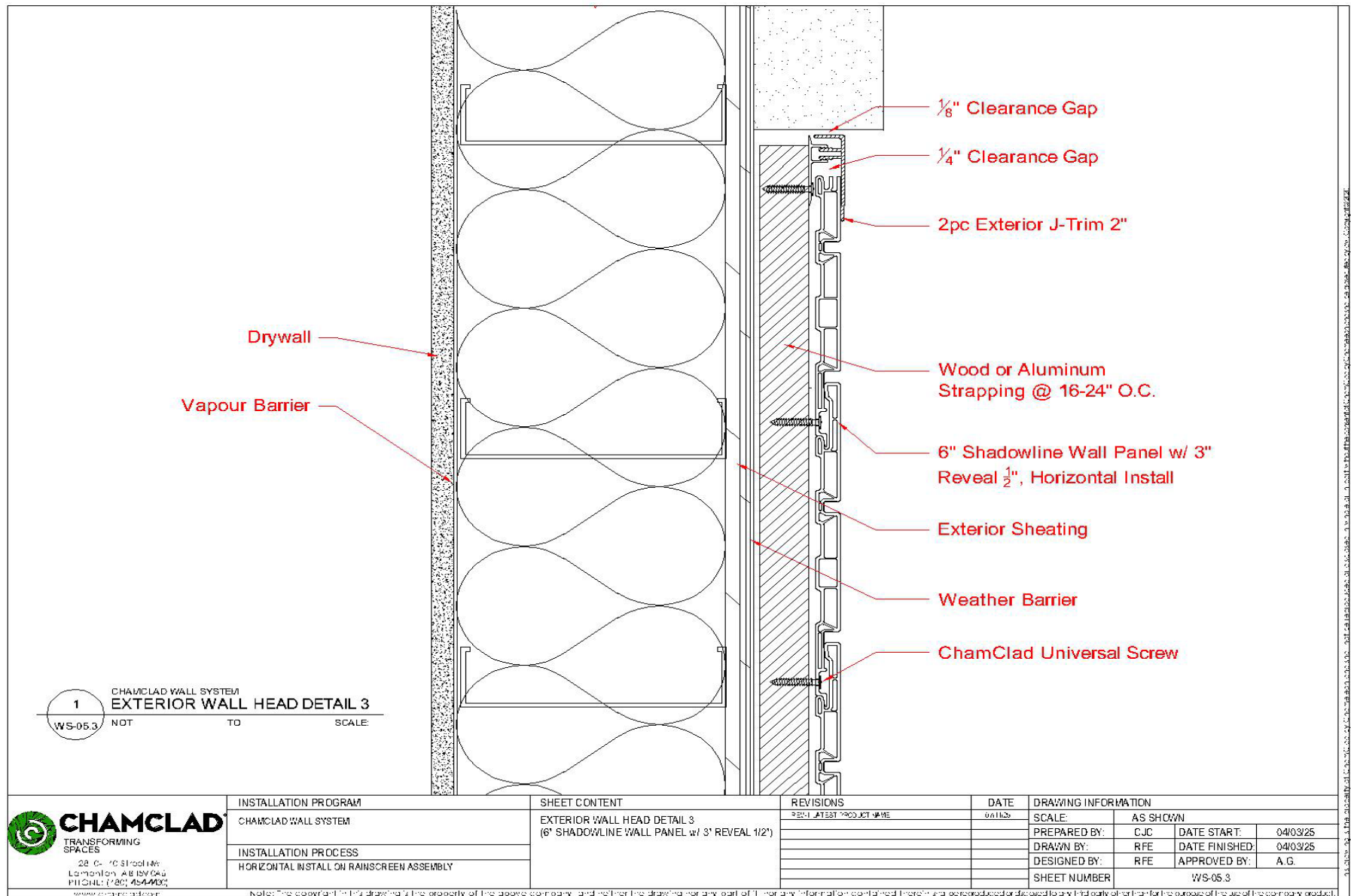
8.4 WS-05.2 Exterior Wall Head Detail 2



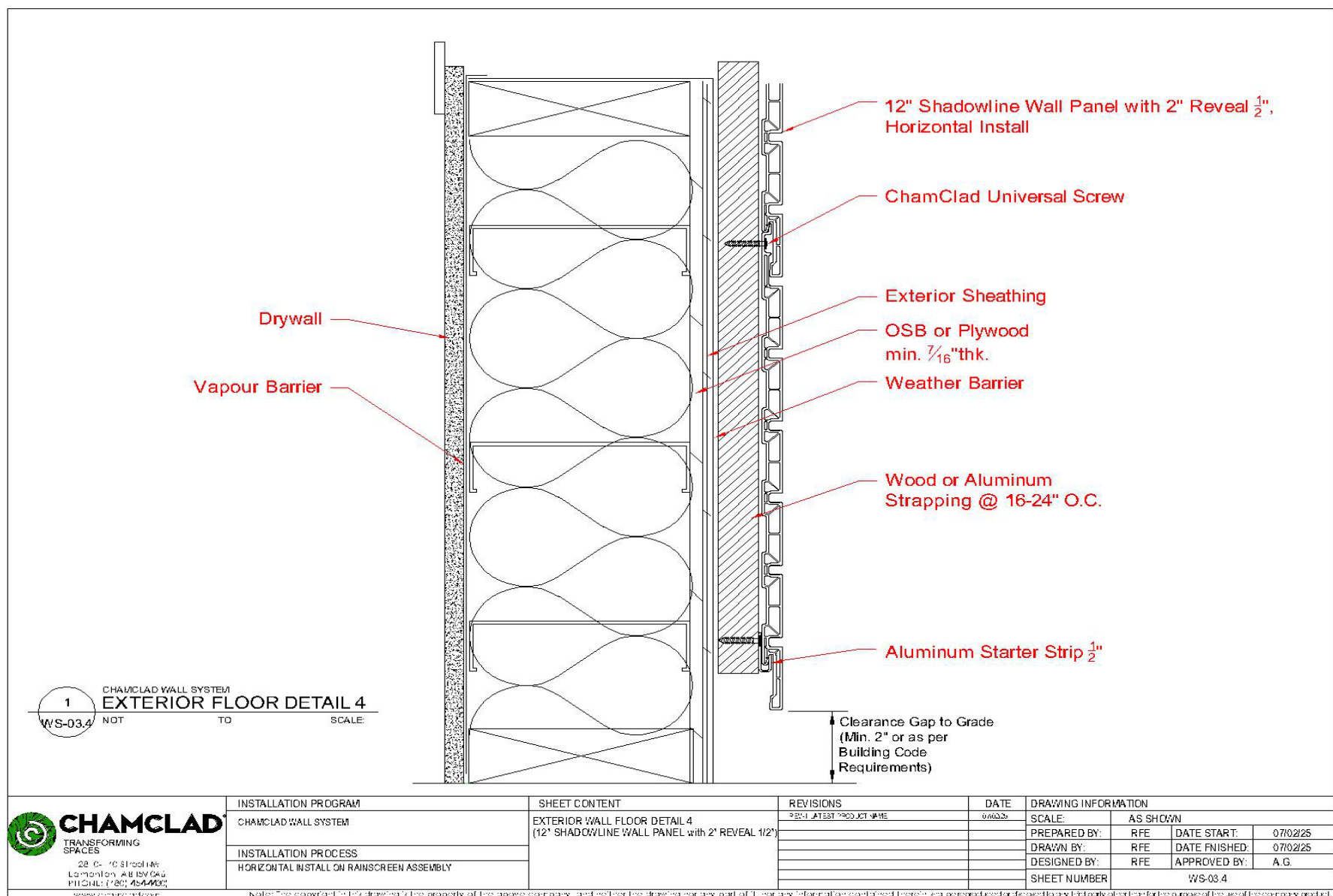
8.5 WS-03.3 Exterior Floor Detail 3



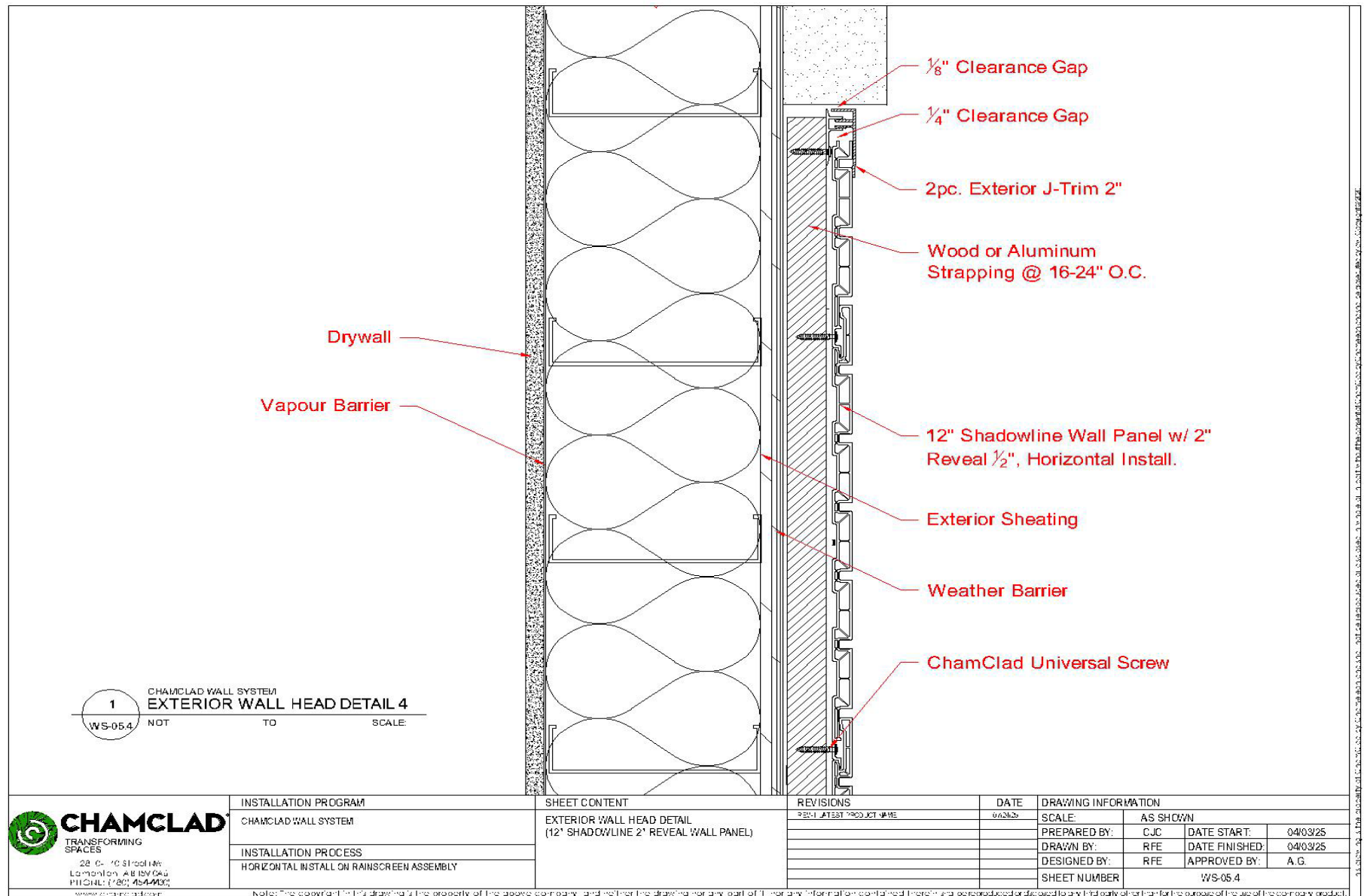
8.6 WS-05.3 Exterior Wall Head Detail 3



8.7 WS-03.4 Exterior Floor Detail 4

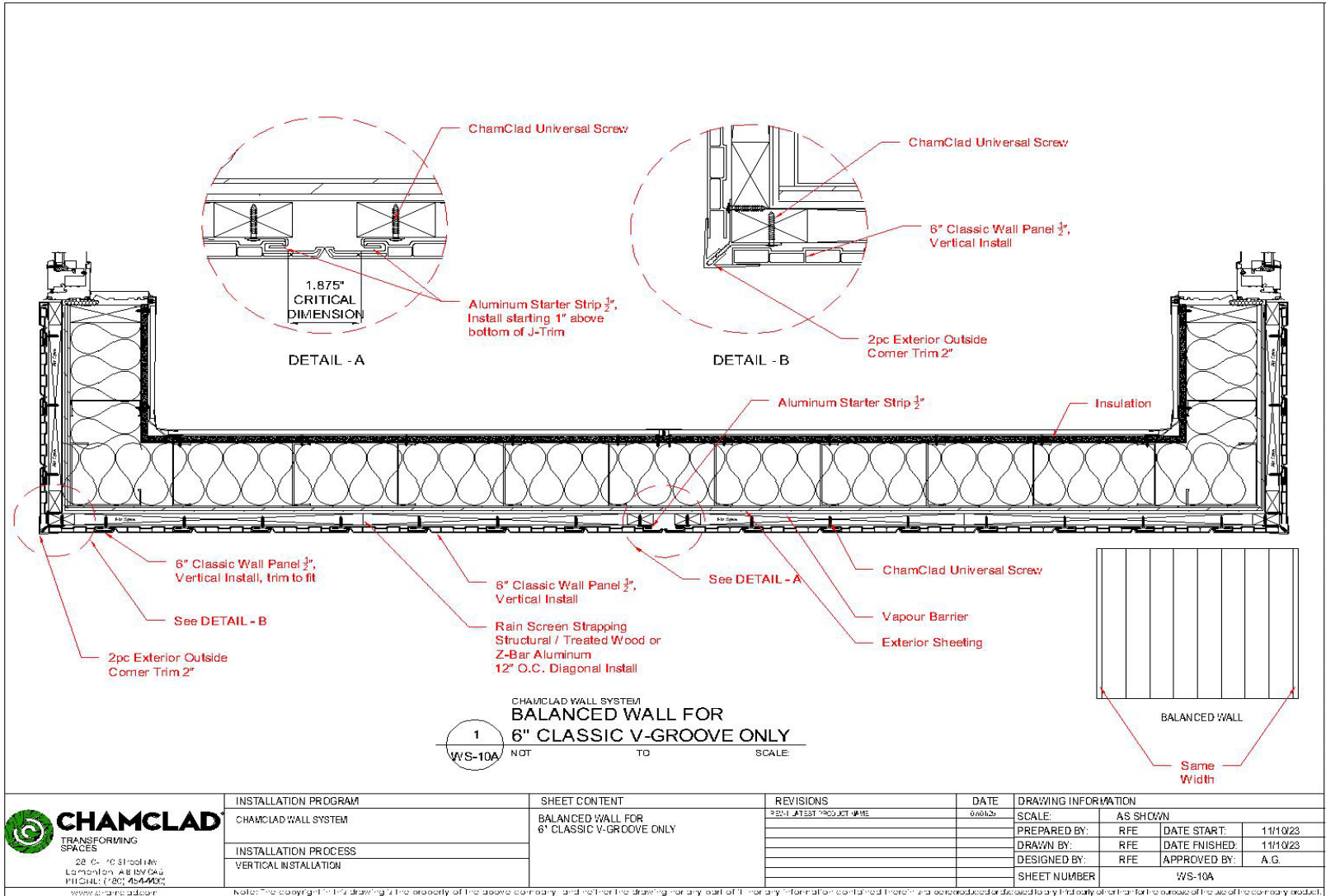


8.8 WS-05.4 Exterior Wall Head Detail 4

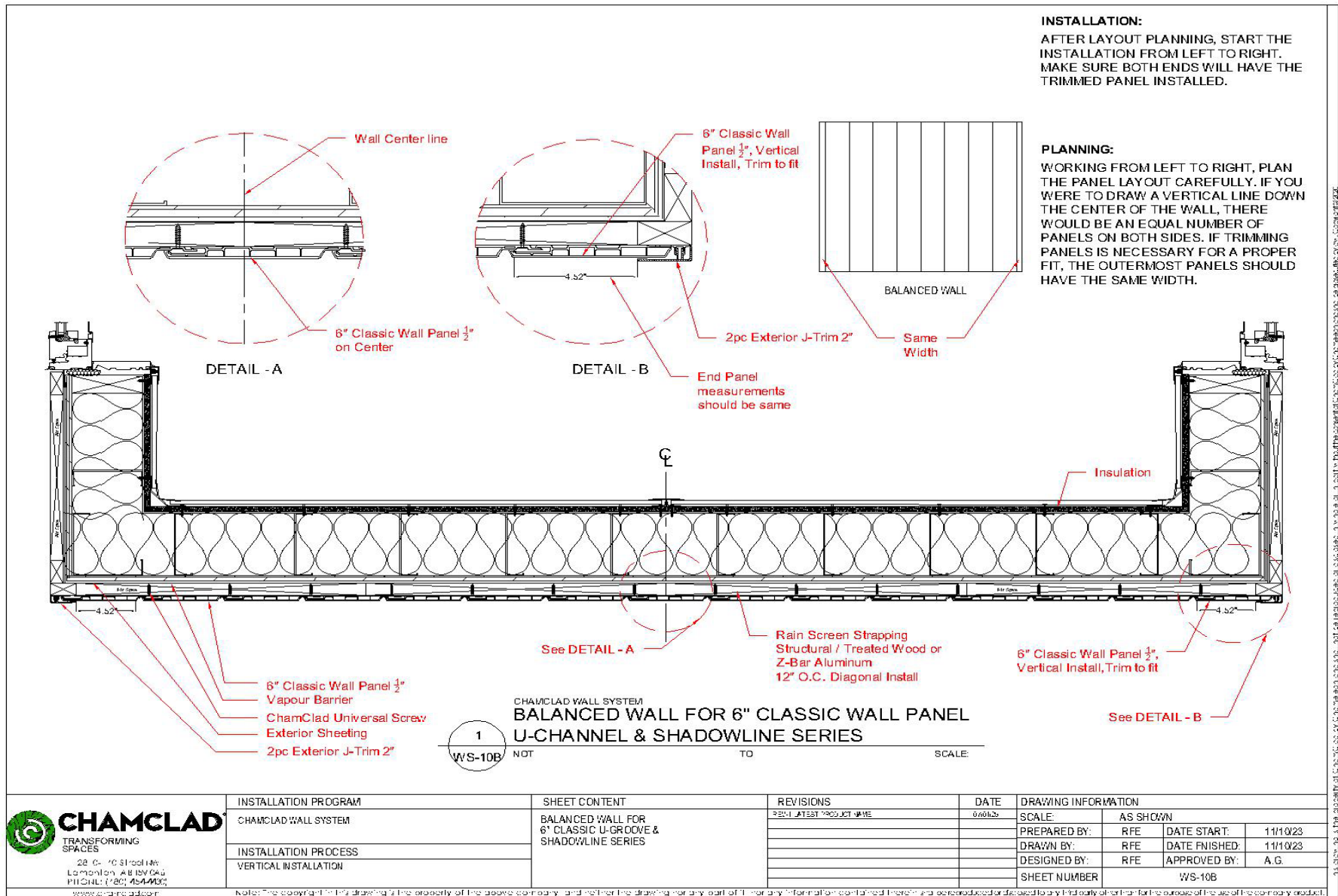


9.0 ASSEMBLY DRAWINGS – VERTICAL

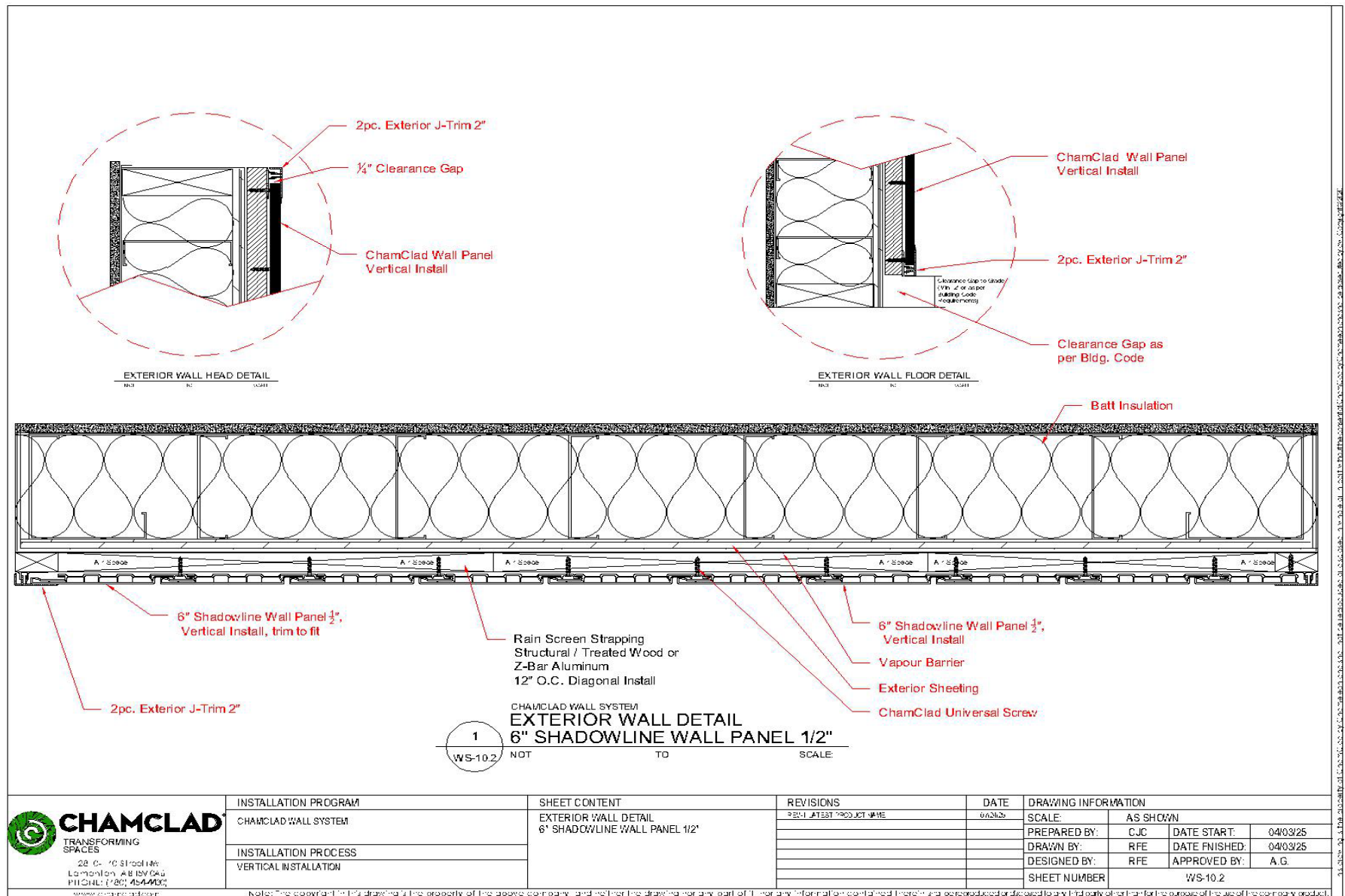
9.1 WS-10A Balanced Wall For 6" Classic V-Groove Only



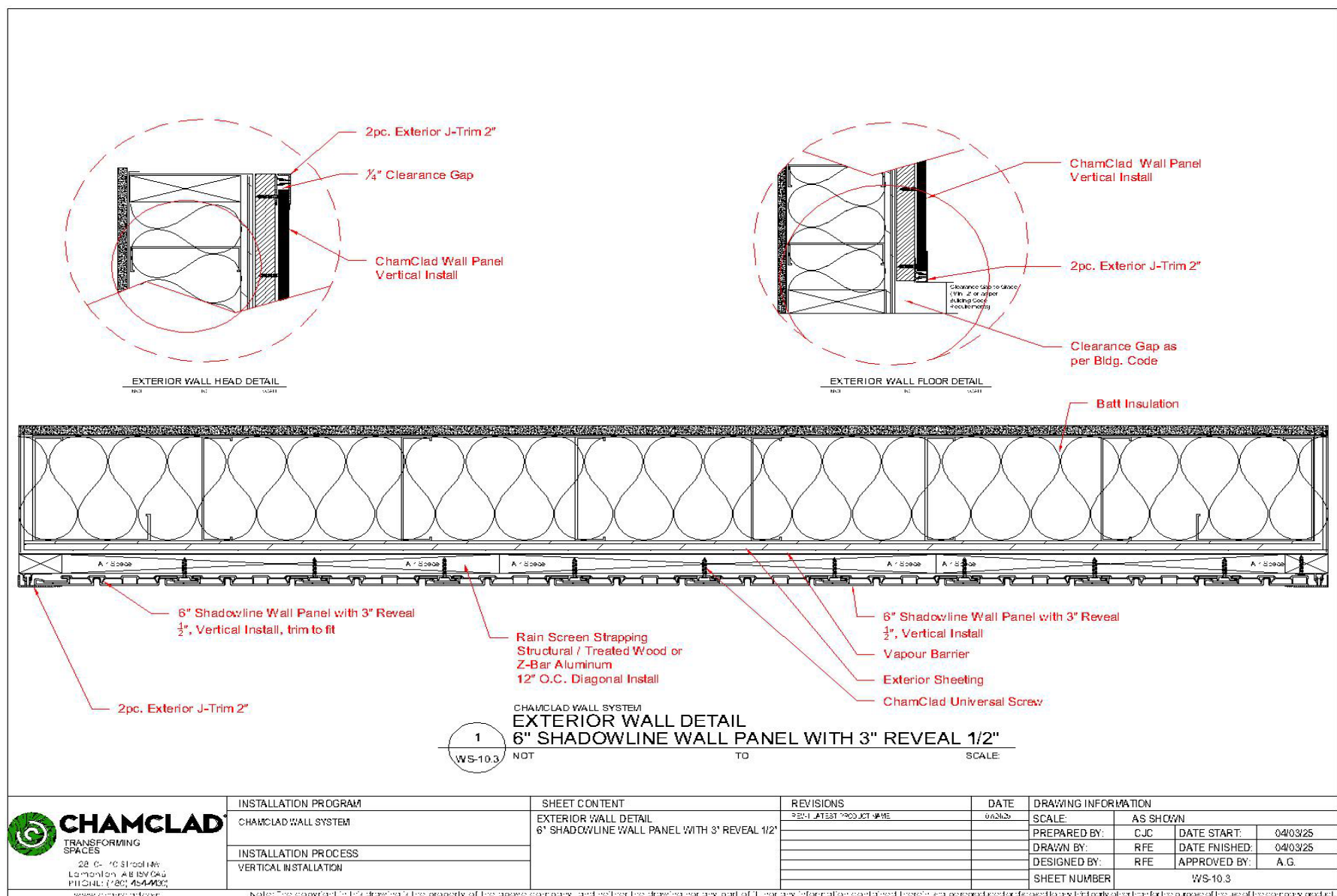
9.2 WS-10B Balanced Wall For 6" Classic U-Channel & Shadowline Series



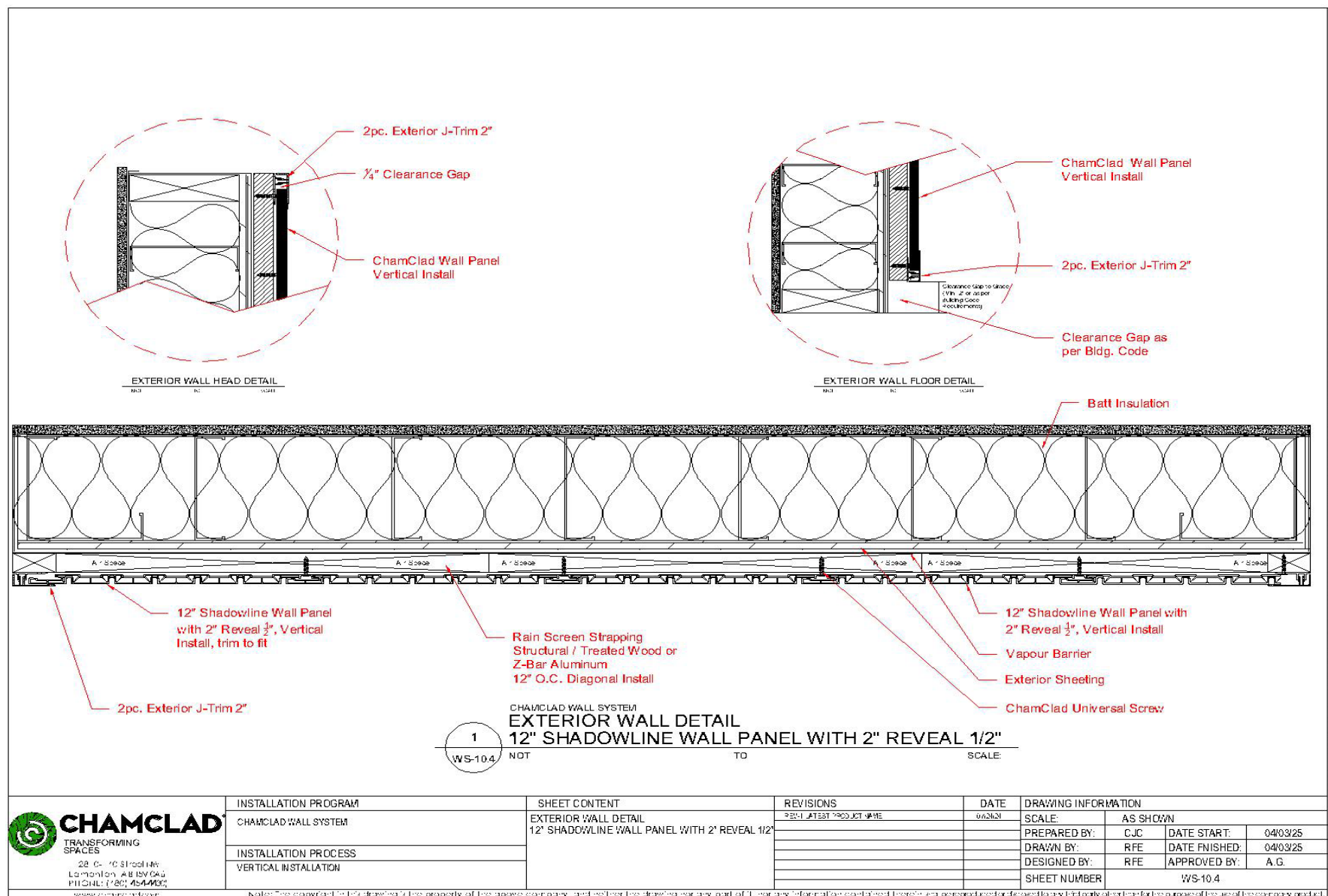
9.3 WS-10.2 Exterior Wall Detail 6" Shadowline Wall Panel 1/2"



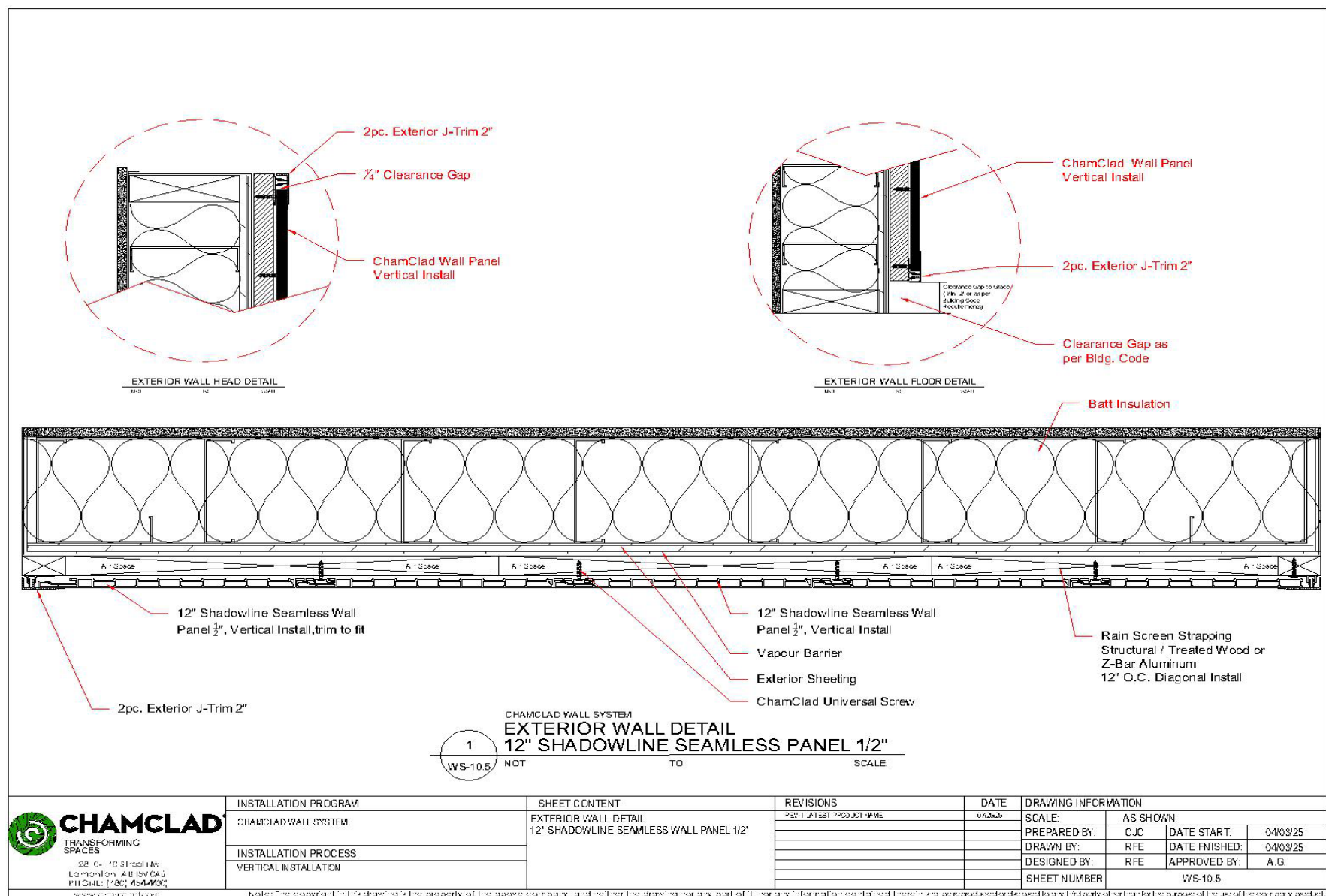
9.4 WS-10.3 Exterior Wall Detail 6" Shadowline Wall Panel with 3" Reveal 1/2"



9.5 WS-10.4 Exterior Wall Detail 12" Shadowline Wall Panel with 2" Reveal 1/2"



9.6 WS-10.5 Exterior Wall Detail 12" Shadowline Seamless Panel 1/2"





Revised on August 22, 2025



PROFILES

EXTERIOR SHADOWLINE WALL PANEL 1/2"

- 6"- 12', 16', 20' & 30'
- 6" - 2 x 3" REVEAL - 12', 16' & 20'
- 12" - 6 x 2" REVEAL - 12' & 16'
- 12" SHADOWLINE SEAMLESS - 12' & 16'

Please Note: if you are using our Shadowline panels for soffit, ventilation is supplied by others.

****CUSTOM SIZES AVAILABLE**

EXTERIOR TRIMS (1/2" PANELS)

- 2PC OUTSIDE CORNER (2" & 3.5"), 2PC J- TRIM (2" & 3.5")
- 2PC H-TRIM (2.75"), 1PC INSIDE CORNER (4"), ALUMINIUM
- STARTER STRIP (1/2")
- 2" BATTEN - installed w/ 12" Shadowline Seamless Wall Panel 1/2"

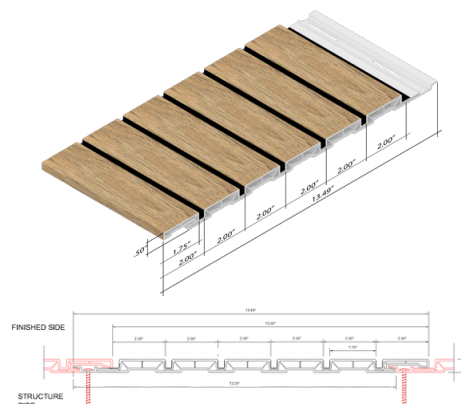
FINISHES

- WOODGRAINS, SOLIDS, ANODIZED, METALLICS
- & INTERIOR FINISHES
- NON STOCK COLOURS AVAILABLE (ADDITIONAL LEAD TIMES)

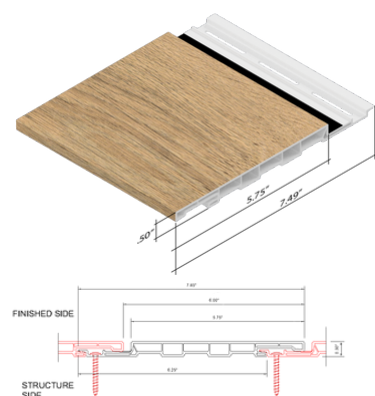
LEAD TIMES

- 1-2 WEEKS FOR STOCK COLORS + SHIPPING
- 2-3 WEEKS FOR NON-STOCK COLORS + SHIPPING

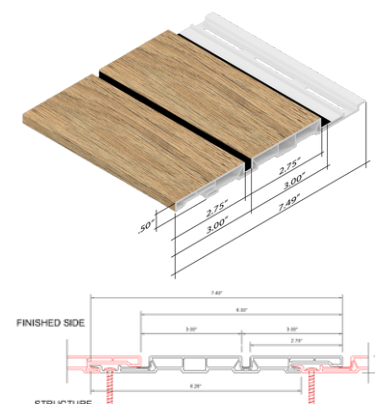
12" Shadowline Panel with 2" Reveal 1/2"



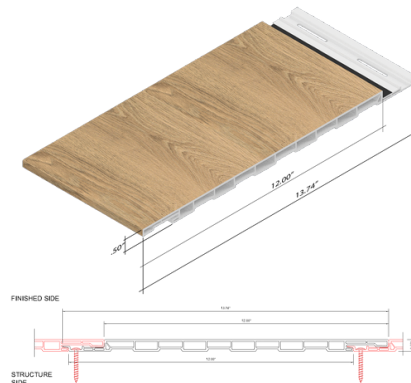
6" Shadowline Wall Panel 1/2"



6" Shadowline Panel Wall with 3" Reveal 1/2"



12" Shadowline Seamless Wall Panel 1/2"



BIM & CAD DWG Files- Visit our Website for details

TESTS , EVALUATIONS & CERTIFICATES



CCMC EVALUATION 14323-R Criteria: CCMC-TG-074633.07-15, "CCMC Technical Guide for Heavy Gage PVC Siding"
CCMC EVALUATION 14719 (EFFECTIVE OCT. 2025)
CAN/CGSB 41.24-95



ASTM D635-18, Standard Test Method for Rate of Burning and/or Extent and Time of Burning of Plastics in a Horizontal Position.

ASTM E 119- 2 Hr. Heat and Flame Resistance

Fire Rating: CAN/ULC S 134 - Standard Method of Fire Test of Exterior Wall Assemblies

Wind Load: ASTM E 330 Procedure B: Passed 4000 PA (183 MPH)



Florida Product Code: 45923 (CLADDING) - 6" ONLY

Florida Product Code: 46611 (SOFFIT) - 6" ONLY

TDI (Texas Department of Insurance)- Evaluation ID: EC-149

WUI (The Wildland - Urban Interface) - California Dept. of Forestry & Fire Protection Listing No.8140-2381:0001



UL 723 (ASTM E84)-Fire Rating (Class A)

NFPA 285 -Standard Fire Test Method for Evaluation of Fire Propagation Characteristics of Exterior Wall Assemblies

NFPA 268 Standard Test Method for Determining Ignitability of Exterior Wall Assemblies

Wind Load: ASTM E 330 Procedure B: Passed 4000 PA (183 MPH)

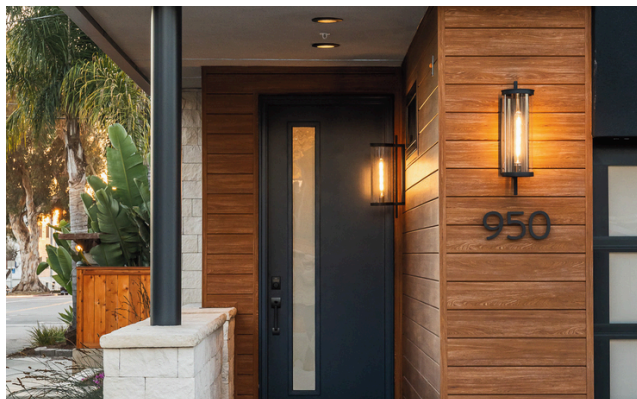


Verified Product Declarations  Health (HPD)* and  Environmental (EPD)

THE NORTH AMERICAN EPD® SYSTEM

*The HPD for this product has been verified under HPD Open Standard version 2.0 by an Approved Verifier under the HPDC Third Party Verification Program.





PROFILES

EXTERIOR WALL PANEL 1/2"

Versatile by design, the panel can be installed to display either a U-Channel or V-Groove profile.

6" - 12', 16', 20' & 30'

CUSTOM LENGTHS AVAILABLE (6" Panel ONLY)

PLEASE NOTE: Our exterior wall panel may also be used in soffit or interior applications. However when using our 1/2" panel for soffit applications venting is supplied by others

EXTERIOR TRIMS (1/2" PANELS)

2PC OUTSIDE CORNER (2" & 3.5"), 2PC J- TRIM (2" & 3.5")
2PC H-TRIM 2.75", 1PC INSIDE CORNER 4", ALUMINIUM STARTER STRIP (1/2")

FINISHES

WOODGRAINS, SOLIDS, ANODIZED, METALLICS

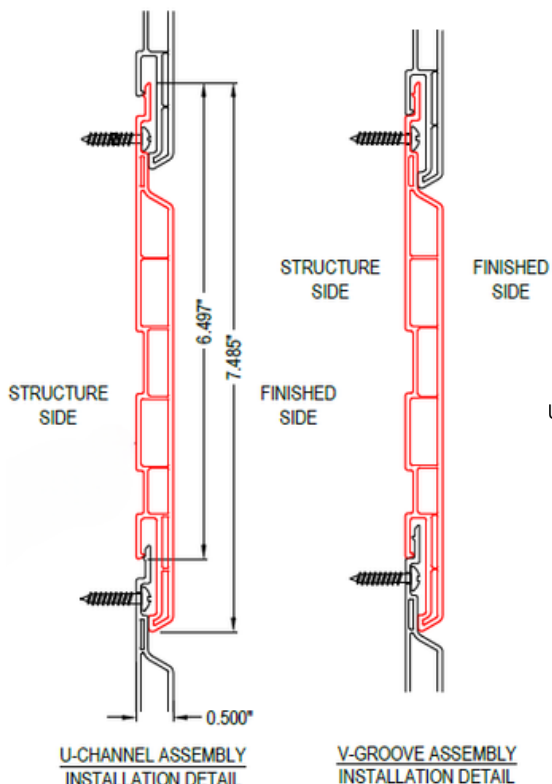
& INTERIOR FINISHES

NON STOCK COLOURS AVAILABLE (ADDITIONAL LEAD TIMES)

LEAD TIMES

1-2 WEEKS FOR STOCK COLORS + SHIPPING

2-3 WEEKS FOR NON-STOCK COLORS + SHIPPING



BIM & CAD DWG Files- Visit our Website for details

TESTS , EVALUATIONS & CERTIFICATES



CCMC EVALUATION 14323-R Criteria: CCMC-TG-074633.07-15, "CCMC Technical Guide for Heavy Gage PVC Siding"
CAN/CGSB 41.24-95

ASTM D635-18, Standard Test Method for Rate of Burning and/or Extent and Time of Burning of Plastics in a Horizontal Position.

ASTM E 119- 2 Hr. Heat and Flame Resistance



Fire Rating: CAN/ULC S 134 - Standard Method of Fire Test of Exterior Wall Assemblies

Wind Load: ASTM E 330 Procedure B: Passed 4000 PA (183 MPH)



ICCES ESR 4560 Evaluation Report - Division 07 00 00 Thermal and Moisture Protection Section: 07 46 00 Siding

Florida Product Code: 45923 (CLADDING)

Florida Product Code: 46611 (SOFFIT)

MIAMI-DADE COUNTY, FLORIDA Notice of Acceptance: 23-1215.02

TDI (Texas Department of Insurance)- Evaluation ID: EC-149

WUI (The Wildland - Urban Interface) - California Dept. of Forestry & Fire Protection Listing No.8140-2381:0001



UL 723 (ASTM E84)-Fire Rating (Class A)

NFPA 285 -Standard Fire Test Method for Evaluation of Fire Propagation Characteristics of Exterior Wall Assemblies

NFPA 268 Standard Test Method for Determining Ignitability of Exterior Wall Assemblies



Wind Load: ASTM E 330 Procedure B: Passed 4000 PA (183 MPH)

Verified Product Declarations



Health (HPD)* and



Environmental (EPD)

THE NORTH AMERICAN EPD® SYSTEM

*The HPD for this product has been verified under HPD Open Standard version 2.
by an Approved Verifier under the HPDC Third Party Verification Program.





WARRANTY INFORMATION

Exterior and Interior Products



CHAMCLAD®
TRANSFORMING
SPACES

info@chamclad.com
www.chamclad.com
(780) 456 -4430

August 2025



WARRANTY CERTIFICATE

50 YEAR LIMITED WARRANTY - 15 YEARS NON PRORATED

PRODUCT INFORMATION:

PRODUCT DESCRIPTION(S):

WARRANTY NUMBER:

COLOR/FINISH(ES):

DATE OF ISSUE:

INSTALLER INFORMATION:

CONTRACTOR NAME:

PROJECT NAME (IF APPLICABLE)

PROJECT ADDRESS:

DATE OF SUBSTANTIAL COMPLETION:

OWNER'S INFORMATION:

NAME:

COMPANY (IF APPLICABLE):

ADDRESS:

PHONE:

EMAIL:

BY SIGNING BELOW, THE OWNER CONFIRMS THE INFORMATION PROVIDED ABOVE IS ACCURATE, HAS READ AND FOLLOWED THE INSTALLATION MANUAL INSTRUCTIONS, AND HAS READ AND AGREES TO THE TERMS OF THE CHAMCLAD® PRODUCT LIMITED 50 YEAR WARRANTY

OWNER SIGNATURE:

DATE:

AUTHORIZED ON BEHALF OF CHAMCLAD®:

NAME AND DESIGNATION:

DATE AUTHORIZED:

SIGNATURE:



WARRANTY TRANSFER APPLICATION

This form must be filled in, signed by the Original Owner and the New Owner, and mailed to ChamClad® within the 60 days of the date of transfer of title.

WARRANTY NUMBER:

ISSUE DATE:

ORIGINAL OWNER:

NAME:

ADDRESS OF INSTALLATION:

NEW OWNER'S INFORMATION:

NAME:

ADDRESS:

PHONE:

EMAIL:

SIGNATURE OF ORIGINAL OWNER:

DATE:

BY SIGNING BELOW, THE NEW OWNER CONFIRMS THE INFORMATION PROVIDED ABOVE IS ACCURATE, AND HAS READ AND AGREES TO THE TERMS OF THE WARRANTY AND ACKNOWLEDGES THAT THE TRANSFER IS FOR THE UNEXPIRED PORTION OF THE WARRANTY ONLY.

SIGNATURE OF NEW OWNER:

DATE:

WARRANTY CONDITIONS

Warranty: ChamClad® is pleased to offer a 50-Year Limited Warranty (15 years non prorated) on its ChamClad® line of Rigid PVC siding, cladding and accessories (the “product”), on the terms and conditions set out herein (the “Warranty”).

Coverage: ChamClad® warrants the product will be free from initial manufacturing defects in material or workmanship (“initial defects”) for a period of 50 years (15 years non-prorated) from the date of purchase. Provided the product has been stored and installed according to ChamClad® installation instructions, the product is warranted for a period of 50 years (15 years non prorated) (as prorated as set out below) against warping, blistering, and peeling (“technical failure”), subject to the limitations contained herein.

The product, like all materials, will experience some degree of discolouration due to age, sun exposure, and other environmental conditions. Provided the product has been stored and installed according to ChamClad® installation instructions, ChamClad® further warrants the product against unreasonable discolouration for a period of 50 years (15 years non prorated) from the date of purchase (subject to the limitations contained herein). In the event a claim is brought under the Warranty for unreasonable discolouration, ChamClad®, in its sole discretion, will determine whether the degree of discolouration or fading is unreasonable or excessive, having regard to the factors set out below.

Transferability: The Warranty extends to the original purchaser(s) of the product. The Warranty shall terminate upon the sale of the property or the death of the original purchaser(s)/homeowner(s), *unless* the Warranty is transferred to a new owner by applying to ChamClad® in writing (as more particularly set out herein) within 60 days following the sale. Failure to transfer the Warranty to a new owner in strict compliance herewith shall result in the balance of the Warranty period being forfeited.

The right to transfer the Warranty is limited to a second homeowners only and under no circumstances shall any transfer be deemed to extend or renew the warranty period, which in all cases shall be a maximum of 50 years (15 years non pro-rated) In the case of corporations, governmental agencies, trusts, religious organizations, schools, condominiums, or cooperative housing, the Warranty is non-transferable, except by a builder to the home purchaser in the event of a new home build.

ChamClad®’s Responsibility Under this Warranty: In the event of initial defects, technical failure or unreasonable discolouration covered by the Warranty, ChamClad® will, at its sole discretion, repair, restore or replace the product in accordance with the claim provisions set out below. ChamClad®’s responsibility is limited to the product only. Coverage for installation and labour costs will not be covered by ChamClad® at ChamClad®’s sole discretion, and unless otherwise agreed by ChamClad® in writing, all labour and installation costs are the sole responsibility of the homeowner. The warranty on the repair or replacement product will be limited to the unexpired term of the Warranty for the product which was repaired or replaced

Should any of the products be determined by ChamClad® to have any manufacturing defects or suffer technical failure, ChamClad®, in its sole discretion, shall determine whether to replace, restore, or repair and return said product to the homeowner via the authorized ChamClad® retailer/distributor.

To start a claim, please refer to the [Warranty and Claim Support](#) section on page 5 of this document.
If there are any questions, please contact ChamClad® at 1 (780) 454-4430 or at info@chamclad.com.

The product is not warranted for suitability of use in all situations. It is the sole responsibility of the purchaser to determine the suitability, effectiveness, and safety of any particular use or application of the product. As building code regulations and conditions vary from area to area, each purchaser should consult local building and safety codes for specific requirements, and qualified exterior contractors to determine the suitability.

EXCLUSIONS AND LIMITATIONS

ChamClad®'s obligations and liability under the Warranty are expressly conditional upon and subject to the following:

- The installation, storage, and proper handling of the product must have been completed in accordance with ChamClad® installation instructions (please refer to www.chamclad.com for storage, installation and care instructions). Nothing in this Warranty will construe a warranty of workmanship of any installer nor impose any liability of unsatisfactory performance caused by faulty installation, including, but not limited to failing to ensure proper spacing for expansion and contraction. When storing the product prior to installation, it is important that it is not left uninstalled in direct sunlight. Leaving uninstalled product in direct sunlight will void the Warranty.
- The Warranty must have been registered as required herein, and any transferee must have completed and submitted the proper transfer documentation to ChamClad®. The claimant must provide ChamClad® with all information which it reasonably requires to evaluate the Warranty claim.
- This Warranty does not cover destruction of or damage to the product, or to the product's failure to adhere to any surface, where caused or contributed to by improper installation, improper cleaning (including the use of unapproved cleaning products or any abrasive materials), misuse, neglect, impact from foreign objects, ice, fire, wind (including tornados or other extreme wind events), earthquake, flooding (overland or otherwise), lightning or acts of God.
- This Warranty does not cover abnormal surface weathering or distortion which may be caused or contributed to by air pollution, fumes, vandalism, misuse, harmful chemicals, or close proximity to heat sources such as fireplaces, barbecues, heaters and open flames. This Warranty does not cover damage to the product's finish resulting from foreign substances such as grease, oil, sand, and dirt.
- This Warranty does not cover damage to the product caused or contributed to by the reflection, refraction, or intensification of sunlight from nearby highly reflective surfaces. Care must be taken when determining whether the product is suitable for its proposed application by determining whether there are any reflections, refraction or intensification of sunlight which may arise from windows, doors, or other highly reflective surfaces, including those on adjacent properties.
- This Warranty does not cover discolouration (whether unreasonable or otherwise) or other damage caused or contributed to by air pollution, harmful chemicals and harsh weather conditions. Normal weathering is to be expected as a result of exposure to ultraviolet radiation, atmosphere and weather that may cause staining, fading or other issues which may vary due to the geographic location of a property, sunlight, air quality, or other factors.
- Coverage under this Warranty for discolouration will be limited to abnormal or unreasonable discolouration, judged against the weathering performance provided by ChamClad®'s laminate supplier. The standard for unreasonable discolouration in ordinary conditions shall be a colour difference \geq grey scale 2/3 (ISO 105-A02) for exposure in the US and Canada, and otherwise shall be at the sole discretion of ChamClad®. ChamClad® may require independent lab testing to evaluate a claim for unreasonable discoloration.
- In the event the product has been painted or sealed using a varnish or otherwise coated over the original factory finish, this Warranty will be void.
- The Warranty will be void if the product is not cleaned in accordance with the approved cleaning methods, as more particularly set out below and at www.chamclad.com.
- ChamClad® products are not warranted against movement distortion caused by structural movement or ground settlement. Use of ChamClad® products beyond normal commercial and residential use in an application not recommended by ChamClad® or the local building codes will not be covered.

EXCLUSIONS AND LIMITATIONS

- ChamClad®'s sole and exclusive liability under this Warranty is limited to the repair, restoration or replacement of the product. ChamClad® shall not be liable for any other losses, damages, or expenses, whether direct or indirect, incidental, consequential, punitive, exemplary, or otherwise whatsoever, including without limitation, costs of removal or reinstallation of the product, labour, freight, taxes, loss of goodwill, lost profits and loss of use. ChamClad®'s total liability whether arising from or based on contract, warranty, negligence, tort, strict liability, or any other cause or basis whatsoever, is strictly limited to the purchase price of the products involved. ChamClad® will not be responsible for any loss of any kind arising from a breach of this Warranty, for the sale of the product or from negligence or omissions on the part of ChamClad®, its agents or employees. The warranty on any repaired or replacement products will be limited to the unexpired term of the warranty on the original product.
- If a claim is made for a product that is no longer available, ChamClad® reserves the right to supply a siding product that, in its sole discretion, is of equal quality and colour range for the purpose of fulfilling ChamClad®'s obligations under this Warranty.
- Any person to whom product is supplied under the terms of the Warranty shall only be entitled to benefits of the unexpired term of the Warranty applicable to the product originally installed.
- The Warranty coverage against technical failure is prorated as per the below pro-ration schedule (starts from the original date of purchase of the product):
 - ⦿ First 15 years (0 - 15 years) -100% of the cost of materials will be covered
 - ⦿ Next 5 years (16- 20 years) - 75% of the cost of materials will be covered
 - ⦿ Next 10 years (21 - 30 years) - 50% of the cost of materials will be covered
 - ⦿ Next 10 years (31 - 40 years) - 25% of the cost of materials will be covered
 - ⦿ Next 10 years (41 - 50 years) - 10% of the cost of materials will be covered
- If any of the exclusions, disclaimers or limitations are prohibited by law, such provisions may be severed from the Warranty without otherwise affecting the validity of the balance of the provisions.
- This warranty is exclusive and in lieu of any and all other warranties, express, implied, and statutory.

WARRANTY CLAIMS AND SUPPORT

To make a claim under the Warranty, the original owner or registered transferee must notify ChamClad® within thirty (30) days of discovering the defect.

Such notice must be emailed to info@chamclad.com.

The claim must include:

- A description of the defect(s), including photos
- Date of discovery
- Signed warranty certificate issued by ChamClad®

With reasonable notice, the owner shall allow our agents and/or distributor to enter the property and building to view the product only when deemed necessary and solely by ChamClad®.

When asked, the owner or transferee will be responsible to provide all documentation and defective samples at the owner's expense.

CARE AND MAINTENANCE OF CHAMCLAD PRODUCTS

ChamClad® products are designed to be low maintenance, and our laminate films have exceptional properties that ensure ease of cleaning and surface longevity. They are highly ultra-violet, scratch, and salt air resistant. The film's low surface tension makes it inherently dirt-repellent and therefore easy to clean. ChamClad® finishes include anti-graffiti properties and, in most cases can be easily removed using a garden hose and mild kitchen detergent and warm water.

To preserve the lifespan of your ChamClad® product and maintain its warranty, regular cleaning and inspection are essential.

- **Minimum Cleaning Frequency:** In normal or urban environments, we recommend cleaning your ChamClad® product every 12-18 months.
- **High-Exposure Areas:** In areas subject to high pollutants, such as industrial or coastal environments, we recommend cleaning your ChamClad® product every 8-12 months.
- **Regular Inspections:** Inspect the product frequently and promptly remove any debris or contaminants such as bird droppings. Prolonged contact with such materials may lead to staining, uneven wear, or surface damage.

Refer to the recommended maintenance guidelines below to ensure optimal care of your ChamClad® product.

General Cleaning:

- You may clean the surface with a soft cloth, sponge or soft bristle brush and a neutral detergent. It is recommended to use ChamClad® Product Cleaner (supplied by ChamClad®) and/or a soap, or liquid cleaner (in non-concentrated form) such as Simple Green. Follow with a thorough rinsing of fresh water to ensure all cleaner has been removed.
- If marking has occurred from board-to-board friction, you may clean it with a soft cloth soaked in water and soap. Allow the cloth to sit on the area for 60 seconds. Panels should be rinsed thoroughly with clean water.
- To avoid streaking start at the top of the wall – working your way to the bottom.
- You may pressure wash ChamClad® panels with a low PSI pressure washer. DO NOT exceed 1500 PSI.

DO NOT:

- Do not use solvents when cleaning panels. Solvents may damage the protective layers in the film.
- Do not wash panels with a pressure washer at close range.
- Do not use abrasive, erosive, or caustic solvents to clean ChamClad® panels as they can dull and/or damage the panel finish and will void the warranty.

Should you experience removal difficulties, please contact us via email at info@chamclad.com



FINISHES

CHAMCLAD® EXCLUSIVE FINISHES



SUGAR MAPLE



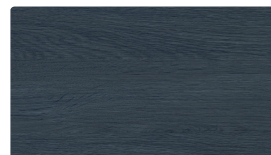
SANDALWOOD



MANHATTAN NATURAL OAK



ROCKY MOUNTAIN OAK



BLUE RIVER

WOODGRAINS



ATLANTIC WHITE



BEACHWOOD GREY



TOFINO



BARNBOARD GREY



CANADIAN PINE



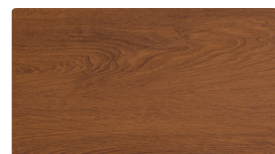
SUNBLEACHED OAK



BARREL OAK



CHAI CEDAR



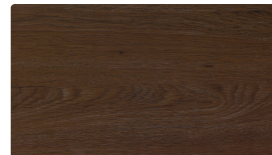
CINNAMON WALNUT



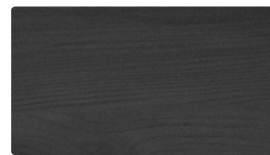
HARVEST WALNUT



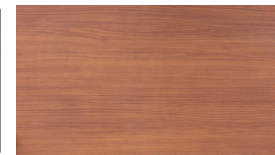
TOFFEE



MODERN WALNUT



CHARRED BLACK



SPANISH REDWOOD



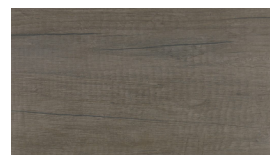
NATURAL OAK



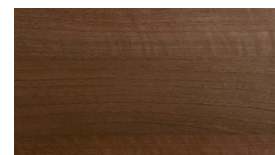
MOUNTAIN OAK



HONEY



MONUMENT OAK

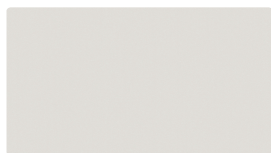


CALIFORNIA REDWOOD



TEAK

ULTRA MATTE SOLIDS



CRYSTAL WHITE



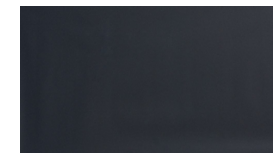
PEBBLE BROOK



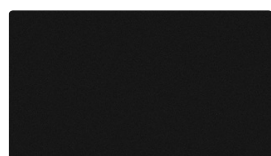
SAND DOLLAR



WARM AUTUMN



GREY ASPHALT



BLACK SAND

ACTUAL COLORS MAY VARY FROM PRINTED REPRESENTATION
CONTACT YOUR LOCAL REPRESENTATIVE FOR AVAILABLE STOCKED COLORS AT THEIR LOCATION.



CHAMCLAD®
TRANSFORMING
SPACES
info@chamclad.com
www.chamclad.com
780.454.4430



FINISHES

ANODIZED, SOLIDS AND METALS



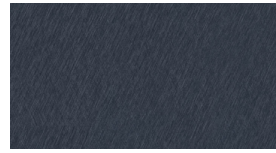
BRUSHED METALLIC



COPPER



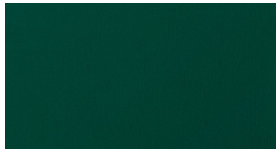
MOSSY OAK



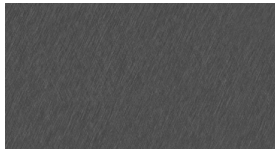
BRUSHED TITANIUM



BRILLIANT BLUE



BRITISH RACING GREEN



BRUSHED CHROME

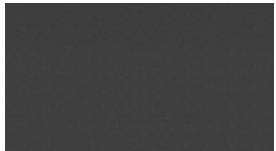


BRUSHED SILVER



MERLOT

INTERIOR ONLY



BLACK LEATHER



CLASSIC OAK



ITALIAN LEATHER



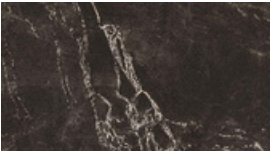
VEGAS STONE



TIFFANY'S



SORRENTO



BLACK PEARL



IVORY STONE



TERRA COTTA

PLEASE NOTE ALL FINISHES MAY BE USED FOR INTERIOR APPLICATIONS, HOWEVER INTERIOR ONLY FINISHES **MAY NOT BE USED ON EXTERIOR APPLICATIONS.**

ACTUAL COLORS MAY VARY FROM PRINTED REPRESENTATION
CONTACT YOUR LOCAL REPRESENTATIVE FOR AVAILABLE STOCKED COLORS AT THEIR LOCATION.

50 YEAR WARRANTY (15 YEARS NON PRORATED) ON ALL OUR FINISHES

Film Performance:

AAMA 303-19 Voluntary Specification for Rigid Polyvinyl Chloride (PVC) Exterior Profiles.
AAMA 307-16 Voluntary Specification for Laminates Intended for Use on AAMA Certified Profiles.

AAMA 664-21 Voluntary Specification for In-Process Quality Control Requirements for Applicators of Synthetic Interior & Exterior Laminates.



CHAMCLAD®
TRANSFORMING
SPACES
info@chamclad.com
www.chamclad.com
780.454.4430



SCAN HERE FOR ADDITIONAL
FINISH INFORMATION & OPTIONS